



BOLES BULLETIN

Weekly Newsletter of Boles Junior High School

3900 SW Green Oaks Blvd., Arlington TX 76017; 682-867-8000; www.aisd.net/boles

Editor: Lee Hendrix - bolesnews@gmail.com

Newsletter article deadline is 5pm Friday

December 11, 2011

Published by the Boles JH PTA



A MESSAGE FROM OUR PRINCIPAL

Dear Parents:

Here are a few thoughts and reminders as we come to the end of the fall semester and prepare for the winter break.

Bulldogs Season of Giving:

Thank you for supporting "Coats-for-Kids," "Coins-for-Kids," and the caring projects this holiday season. To date, students have raised over \$1,500 for the "Coins for Kids" program. We also collected several boxes of coats & jackets. Some of our advisory classes have adopted families and U.S. troops to buy gifts and provide care packages this holiday season. We have shown how truly blessed we are with our giving to the less fortunate in our community and those who serve in the armed forces for our country.

Performing Fine Arts Programs:

The holiday season is also a time to enjoy our winter concerts. Last week, I had the pleasure of attending the band, choir, and the show choir's holiday winter concerts. All of the fine arts organizations have done an outstanding job performing our holiday favorites. This week I will attend the Boles Players' holiday play "Fruitcakes" and the orchestra's winter show at Martin High School. Please join me in recognizing the efforts of Ms. Jocelyn Epley, Ms. Audrey Alotto, Mr. Gordon Hart, Ms. Jessica Parker, Ms. Lyn Stone, and Mr. Kevin Paris. The professionalism and hard work of the Boles JH fine arts team is evident in our students' performances!

Fall Semester Exams:

This Friday students will be taking a final exam for their 8th period class. Students will take their remaining finals on Monday & Tuesday next week. Students will be dismissed at 11:50 am on Monday and Tuesday. There will be no final exam for 6th period advisory class. It is very important that your child prepares for these finals because the exams are approximately worth 15% of their fall semester grade.

Students are expected to fully comply with the dress code on early dismissal days. If students are out of compliance of the dress code, the administration will have no choice but to send students home for the day. The assistant principals & I have

worked very hard to be consistent all year long with the dress code and we appreciate your support with this particular issue.

If your child misses a final exam, they will be given a zero until they make it up. Please contact the Boles office to schedule and exam make up time on January 4th. Because of early dismissal, please make arrangements for your child to be picked by 12:15pm. Lunch will not be provided on early dismissal days and bus transportation will be provided for those students who qualify.

Academic Expectations:

Our teachers and counselors will continue to work with students that do not meet proficiency standards in the core academic areas. It is important that you continue to monitor your child's grades and attendance through the AISD internet system called "Parent Self-Serve."

In order to accommodate students that are not meeting academic standards, schedules may change next semester. All students will be expected to report to their advisory class at 8:55am on Thursday, January 5, 2012 to obtain their spring semester schedule. If you have any questions about final exams, policy & procedures, or the academic standards at Boles JH, please feel free to contact my office.

Finally, I hope you enjoy your time with your children this winter break from school. May the joy and peace of the holiday season be with you and your family throughout the new year!

Sincerely,

Fernando A. Benavides
Boles Junior High, Principal

The next "Coffee with the Principal" will be held on Tuesday, December 13 at 9:00am. Please make plans to attend.

1st Semester Exam Schedule

Friday, December 16th:

6 th period	1:48-2:05
7 th period	2:09-2:56
8 th period (exam)	3:00-3:55

Monday, December 19th:

1 st period	8:55-9:50
2 nd period	9:55-10:50
3 rd period	10:55-11:50

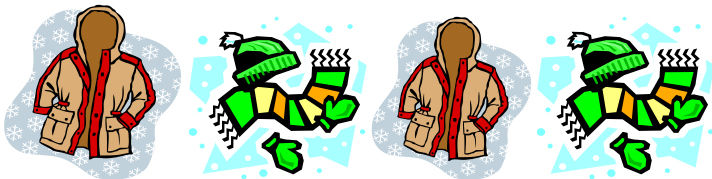
Tuesday, December 20th:

4 th period	8:55-9:50
5 th period	9:55-10:50
7 th period	10:55-11:50

PARENTS.....

The Boles PTA is still selling spirit wear! Attached to this email is a flyer which shows the different styles of shirts we have and their prices. Please print out the form and send it, with payment, to the front office if you're interested in purchasing a shirt.

Remember, Boles JH PTA has a new website this year. You can always check www.bolesjrhighpta.org for upcoming events!



Bulldogs Against Drugs (B.A.D.) and Jesus and Me (J.A.M.) are sponsoring a coat drive. Please bring new or gently used coats, hats, gloves and/or scarves (ALL sizes) to your advisory period now through December 16.

Major Retailers Want To Give Our School Money!



Orders for the cash/gift cards can be placed with the order form provided in this newsletter. Or to streamline the order process you can place your order online (PREFERRED METHOD) which is as easy as 1,2,3.

-Go to www.shopwithscrip.com

-Enter your family info and Boles enrollment code 68B268C83L37L

-Pick the cards you want to buy! They will automatically send me your order. You can pay online or send a check to **Boles PTA** for your order.

Orders placed by Tuesday pm will be ready for pick up on Friday. You can pick them up at Boles from 3:30 - 4:15 in front of the school.

Thanks so much for your support and happy shopping!!

Cara Hackley
PTA Budget & Finance

817.905.6788
carahackley@sbcglobal.net



The Boles Players will be presenting FRUITCAKES On December 13 & 14 at 6:30pm and a matinee performance on Saturday, December 17 at 2:30.



Calling all Bulldogs..... The annual Bulldog Talent Show and Lip Sync Competition will be held on January 5, 2012, beginning at 6:30pm!

No school December 21, 2011 through January 4, 2012. School will resume on THURSDAY, January 5, 2012.

Orchestra Overtures

Christmas Concert

The Boles Orchestras will present their Winter Concert on Friday Dec. 16th at 7 PM in the Martin High School Auditorium. Students need to arrive at 6:15 PM in their formal orchestra uniform. There will be a DVD made of the concert; order forms will be available in the foyer.

Orchestra Website

Remember to check the orchestra website, www.bolesorchestra.com, for news and information.

Orchestra Calendar

Elementary Tour (Symphony) Wed. Dec. 14 All day

Christmas Concert @ Martin Fri. Dec. 16 7 pm

Mark Your Calendar:

Dec. 13	Coffee with the Principal	9:00am
Dec. 13	“Fruitcakes” Play	6:30pm
Dec. 14	JAM	8:15am
Dec. 14	“Fruitcakes” Play	6:30pm
Dec. 17	“Fruitcakes” Play/ Matinee Performance	2:30pm
Dec. 19	Early Dismissal	11:55am
Dec. 20	Early Dismissal	11:55am
Jan. 5	Talent Show	6:30pm
Jan. 6	Blackout Back to School Dance	4:30pm

Want a perfect size stocking stuffer? Don't forget Scrip Cash/Gift Cards for your holiday shopping! Here is a list of who is offering extra holiday bonus bucks!



AMC (reloadable) – now 18% profit!!

Starbucks (reloadable) – now 11% profit!!

iTunes – now 9% profit!!

Bath & Body Works – now 18% profit!!

Claire's – 9% profit!!

Game Stop

Cinemark

Chipotle

Smash Burger

Dick's

Sports Authority

And many, many, many more!!

Orders placed by Tuesday night will be ready for pick up or delivery on Friday of the same week!! So, shop and donate to Boles PTA who supports all the fabulous activities your kiddos love!!

SCRIP Family Order Form Boles Junior High

Two easy ways to order your cash cards - this order form or online at www.shopwithscrip.com

Boles' enrollment code is: **68B268C83L37L**

Name				
Check #				
Product	Cost	%	Qty	Total
Ace Hardware	\$ 100.00	4.00%		
Ace Hardware	\$ 25.00	4.00%		
Aeropostale	\$ 25.00	7.00%		
Albertsons	\$ 100.00	4.00%		
Albertsons	\$ 25.00	4.00%		
Amazon.com	\$ 25.00	4.00%		
AMC Theatres	\$ 25.00	7.00%		
AMC Theatres Single	\$ 9.50	16.00%		
American Airlines	\$ 100.00	8.00%		
American Airlines	\$ 250.00	8.00%		
American Eagle Outfitters	\$ 25.00	10.00%		
American Express	\$ 25.00	1.25%		
American Express	\$ 200.00	1.25%		
Applebee's	\$ 25.00	8.00%		
Applebee's	\$ 50.00	8.00%		
Arby's	\$ 10.00	8.00%		
AT&T 125 Min Prepaid	\$ 9.50	20.00%		
AutoZone	\$ 25.00	8.00%		
Avis Car Rental	\$ 50.00	8.00%		
Babies-R-Us	\$ 20.00	1.50%		
Barnes & Noble	\$ 10.00	9.00%		
Barnes & Noble	\$ 20.00	9.00%		
Barnes & Noble	\$ 25.00	9.00%		
Baskin Robbins	\$ 2.00	9.00%		
Bed Bath & Beyond	\$ 100.00	7.00%		
Bed Bath & Beyond	\$ 25.00	7.00%		
Best Buy	\$ 100.00	**4.00%		
Best Buy	\$ 25.00	**4.00%		
Best Buy	\$ 250.00	**4.00%		
Best Western International	\$ 25.00	12.00%		
Best Western International	\$ 100.00	12.00%		
Bookstop	\$ 20.00	9.00%		
Bookstop	\$ 25.00	9.00%		
Boston Market	\$ 10.00	12.00%		
Bruster's Ice Cream	\$ 10.00	8.00%		
Buckle	\$ 25.00	8.00%		
Budget Car Rental	\$ 50.00	8.00%		
Build-A-Bear Workshop	\$ 25.00	8.00%		
Burger King	\$ 10.00	**5.00%		
Burlington Coat Factory	\$ 25.00	8.00%		
Cabela's	\$ 100.00	11.00%		
Cabela's	\$ 25.00	11.00%		
Carl's Jr.	\$ 10.00	5.00%		
Central Market	\$ 100.00	2.00%		
Central Market	\$ 25.00	2.00%		
Cheesecake Factory	\$ 25.00	5.00%		
Chevron	\$ 100.00	1.50%		
Chevron	\$ 50.00	1.50%		
Children's Place	\$ 25.00	12.00%		
Chili's Grill & Bar	\$ 25.00	11.00%		
Chipotle Mexican Grill	\$ 10.00	10.00%		
Cinemark Theatres	\$ 25.00	4.00%		
Cinemark Single Admit	\$ 9.50	15.00%		

Customer #				
OrderDate				
Product	Card Value	%	Qty	Total
Claire's	\$ 10.00	9.00%		
Cold Stone Creamery	\$ 10.00	8.00%		
Comfort Inn	\$ 100.00	4.00%		
Comfort Inn	\$ 50.00	4.00%		
Comfort Suites	\$ 100.00	4.00%		
Comfort Suites	\$ 50.00	4.00%		
Container Store	\$ 25.00	9.00%		
Country Buffet	\$ 25.00	**6.00%		
Courtyard by Marriott	\$ 100.00	8.00%		
Courtyard by Marriott	\$ 50.00	8.00%		
Courtyard by Marriott	\$ 500.00	8.00%		
Cracker Barrel	\$ 10.00	9.00%		
Cracker Barrel	\$ 25.00	9.00%		
CVS/pharmacy	\$ 100.00	6.00%		
CVS/pharmacy	\$ 25.00	6.00%		
Dave & Buster's	\$ 25.00	13.00%		
Denny's	\$ 10.00	7.00%		
Dick's Sporting Goods	\$ 25.00	8.00%		
Dillard's	\$ 100.00	9.00%		
Dillard's	\$ 25.00	9.00%		
Disney	\$ 100.00	2.00%		
Disney	\$ 1,000.00	2.00%		
Disney	\$ 25.00	2.00%		
Domino's Pizza	\$ 10.00	8.00%		
Dunkin' Donuts	\$ 10.00	4.00%		
Exxon	\$ 50.00	1.50%		
Fairfield Inn by Marriott	\$ 100.00	8.00%		
Fairfield Inn by Marriott	\$ 50.00	8.00%		
Fairfield Inn by Marriott	\$ 500.00	8.00%		
Foot Locker	\$ 25.00	9.00%		
GameStop	\$ 25.00	3.00%		
Gap	\$ 25.00	14.00%		
GNC	\$ 25.00	8.00%		
Golfsmith	\$ 25.00	8.00%		
Great Clips	\$ 25.00	8.00%		
Great Indoor	\$ 100.00	4.00%		
Great Indoor	\$ 25.00	4.00%		
Guitar Center	\$ 25.00	4.00%		
Gymboree	\$ 25.00	13.00%		
Hallmark	\$ 25.00	4.00%		
Hard Rock Café	\$ 25.00	10.00%		
Hardee's	\$ 10.00	5.00%		
Home Depot	\$ 100.00	4.00%		
Home Depot	\$ 25.00	4.00%		
Home Depot	\$ 500.00	4.00%		
HomeGoods	\$ 100.00	7.00%		
HomeGoods	\$ 25.00	7.00%		
Hometown Buffet	\$ 25.00	**6.00%		
Honey Baked Ham	\$ 10.00	12.00%		
Hyatt Hotels	\$ 100.00	9.00%		
Hyatt Hotels	\$ 50.00	9.00%		
IHOP	\$ 25.00	8.00%		
iTunes®	\$ 15.00	**8.00%		
iTunes®	\$ 25.00	**8.00%		

***Limited time bonus offer. Participating retailers and products are subject to change without notice.*

Product	Cost	%	Qty	Total
Jack in the Box	\$ 10.00	4.00%		
Jamba Juice	\$ 10.00	7.00%		
JCPenney	\$ 100.00	**7.00%		
JCPenney	\$ 25.00	**7.00%		
Jiffy Lube	\$ 30.00	8.00%		
Jo-Ann Fabrics	\$ 20.00	6.00%		
Journeys	\$ 25.00	10.00%		
Journeys Kidz	\$ 25.00	10.00%		
KFC	\$ 5.00	8.00%		
Kids Foot Locker	\$ 25.00	9.00%		
Kohl's	\$ 100.00	4.00%		
Kohl's	\$ 25.00	4.00%		
Lady Foot Locker	\$ 25.00	9.00%		
Limited	\$ 25.00	9.00%		
Little Caesar's Pizza	\$ 20.00	8.00%		
Logan's Roadhouse	\$ 25.00	8.00%		
Long John Silver's	\$ 5.00	8.00%		
Lord & Taylor	\$ 25.00	8.00%		
Lowe's	\$ 100.00	4.00%		
Lowe's	\$ 1,000.00	4.00%		
Lowe's	\$ 20.00	4.00%		
Lowe's	\$ 25.00	4.00%		
Lowe's	\$ 500.00	4.00%		
Macaroni Grill	\$ 25.00	11.00%		
Macy's	\$ 100.00	10.00%		
Macy's	\$ 25.00	10.00%		
Marriott Hotels & Resorts	\$ 100.00	8.00%		
Marriott Hotels & Resorts	\$ 50.00	8.00%		
Marriott Hotels & Resorts	\$ 500.00	8.00%		
Marshalls	\$ 100.00	7.00%		
Marshalls	\$ 25.00	7.00%		
Michaels	\$ 25.00	4.00%		
Mimi's Café'	\$ 25.00	8.00%		
Murphy USA	\$ 100.00	2.00%		
Murphy USA	\$ 25.00	2.00%		
Murphy USA	\$ 250.00	2.00%		
Neiman Marcus	\$ 50.00	12.00%		
Office Depot	\$ 100.00	4.00%		
Office Depot	\$ 25.00	4.00%		
Office Max	\$ 100.00	5.00%		
Office Max	\$ 25.00	5.00%		
Old Navy	\$ 25.00	14.00%		
Olive Garden	\$ 25.00	9.00%		
On The Border	\$ 25.00	11.00%		
Outback Steakhouse	\$ 25.00	8.00%		
P.F. Chang's China Bistro	\$ 25.00	8.00%		
P.S. From Aeropostale	\$ 25.00	7.00%		
Papa John's Pizza	\$ 10.00	8.00%		
Papa Murphy's Pizza	\$ 10.00	**10.00%		
Payless Shoes	\$ 20.00	13.00%		
PBteen	\$ 100.00	8.00%		
PBteen	\$ 25.00	8.00%		
Pei Wei Asian Diner	\$ 25.00	8.00%		
Pep Boys	\$ 20.00	4.00%		
PetSmart	\$ 25.00	4.00%		
Phillips 66	\$ 25.00	1.50%		
Pinkberry	\$ 10.00	5.00%		
Pizza Hut	\$ 10.00	8.00%		
Quality Inn	\$ 100.00	4.00%		

Product	Card Value	%	Qty	Total
Quality Inn	\$ 50.00	4.00%		
Quiznos	\$ 10.00	10.00%		
Radio Shack	\$ 25.00	4.00%		
Rainforest Café	\$ 25.00	9.00%		
Red Lobster	\$ 25.00	9.00%		
Sally Beauty Supply	\$ 25.00	12.00%		
Saltgrass Steakhouse	\$ 100.00	9.00%		
Saltgrass Steakhouse	\$ 25.00	9.00%		
Sam's Club	\$ 100.00	2.00%		
Sam's Club	\$ 25.00	2.00%		
Sam's Club	\$ 250.00	2.00%		
Sears	\$ 100.00	4.00%		
Sears	\$ 25.00	4.00%		
Sears	\$ 250.00	4.00%		
Sephora	\$ 20.00	4.00%		
Shell	\$ 100.00	2.50%		
Shell	\$ 25.00	2.50%		
Shell	\$ 50.00	2.50%		
Shutterfly	\$ 25.00	9.00%		
Six Flags One-Day Ticket	\$ 32.00	8.00%		
Smashburger	\$ 10.00	10.00%		
Spaghetti Warehouse	\$ 20.00	18.00%		
Speedway	\$ 100.00	4.00%		
Speedway	\$ 25.00	4.00%		
Sports Authority	\$ 100.00	8.00%		
Sports Authority	\$ 25.00	8.00%		
Staples	\$ 100.00	5.00%		
Staples	\$ 25.00	5.00%		
Starbucks	\$ 10.00	7.00%		
Starbucks	\$ 25.00	7.00%		
Steak 'n Shake	\$ 10.00	8.00%		
Subway	\$ 10.00	**4.00%		
Subway	\$ 50.00	**4.00%		
Supercuts	\$ 25.00	8.00%		
Sweet Tomatoes	\$ 25.00	8.00%		
T.J. Maxx	\$ 100.00	7.00%		
T.J. Maxx	\$ 25.00	7.00%		
Taco Bell (IL, IN, MO, TX)	\$ 10.00	3.00%		
Target	\$ 100.00	2.00%		
Target	\$ 25.00	2.00%		
Texaco	\$ 100.00	1.50%		
Texaco	\$ 50.00	1.50%		
TGI Friday's	\$ 25.00	9.00%		
Tom Thumb	\$ 100.00	4.00%		
Tom Thumb	\$ 25.00	4.00%		
Toys-R-Us	\$ 20.00	1.50%		
ULTA	\$ 25.00	4.00%		
United Artist Theatres	\$ 25.00	8.00%		
United Artist Single Admit	\$ 9.50	15.00%		
Walgreens	\$ 100.00	6.00%		
Walgreens	\$ 25.00	6.00%		
Walmart	\$ 100.00	2.00%		
Walmart	\$ 25.00	2.00%		
Walmart	\$ 250.00	2.00%		
Wendy's	\$ 10.00	4.00%		
White Barn Candle Co.	\$ 10.00	13.00%		
White Barn Candle Co.	\$ 25.00	13.00%		
Whole Foods Market	\$ 100.00	3.00%		
Whole Foods Market	\$ 25.00	3.00%		

**Limited time bonus offer. Participating retailers and products are subject to change without notice.

Total Due Both Pages:

Make Checks Payable To: Boles PTA

Turn orders into Boles office on Mondays and collect cards on Fridays from 3pm-4pm in front of school.