



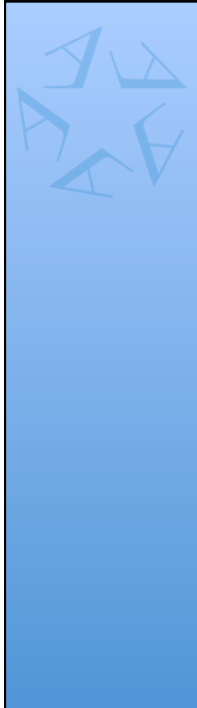
Proposed Boundary Corey-Roquemore Academies

January 15, 2015
Regular Board Meeting



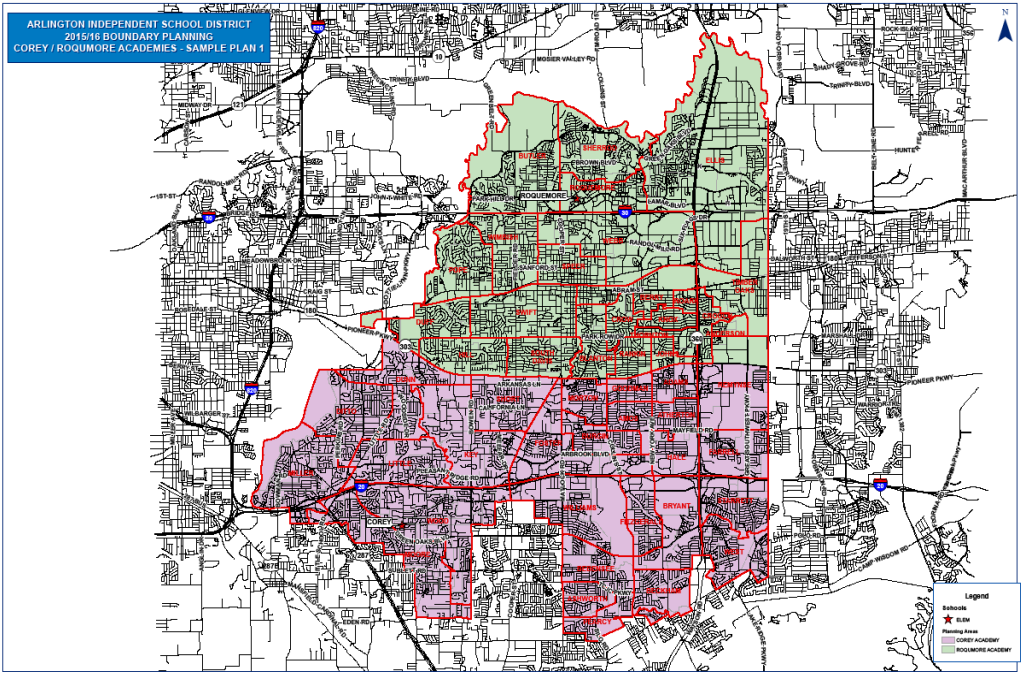
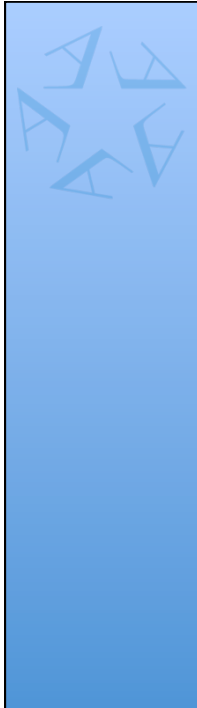
Objective

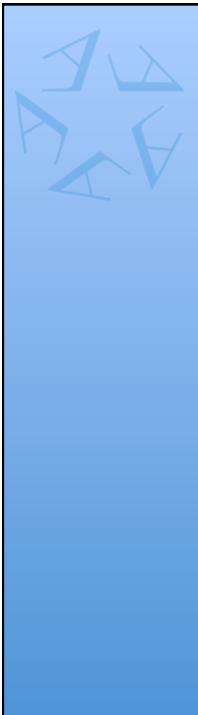
- Review the proposed boundaries for the Dual Language-Fine Arts Academies located at Corey Elementary and Roquemore Elementary




Boundary Rationale

- 1. Student Population Balance
- 2. Transportation





Priority
AISD students who live within the FA/DL zone
AISD students who live outside the FA/DL zone*
Out-of-District students who live in the City of Arlington*
Out-of-District students who do not live in the City of Arlington*
*only where space is available

- 
- ### Recommendation
- Administration recommends the Board approve the boundary as presented.