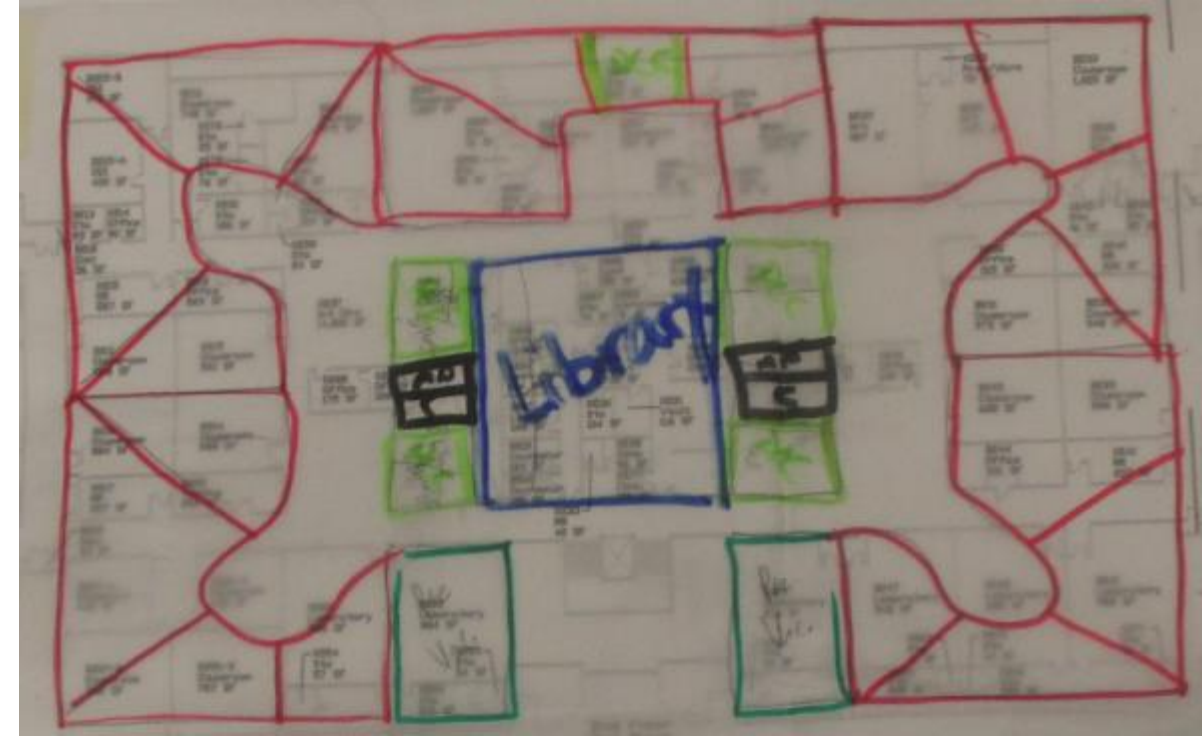


curriculum options

students education
hub community teachers
schedule Learning
Experiential



The *New* Workman Educational Specifications

Achieve Today. Excel Tomorrow.



What is an Educational Specification?

A pre-architectural process that ensures a school's educational program drives spatial priorities



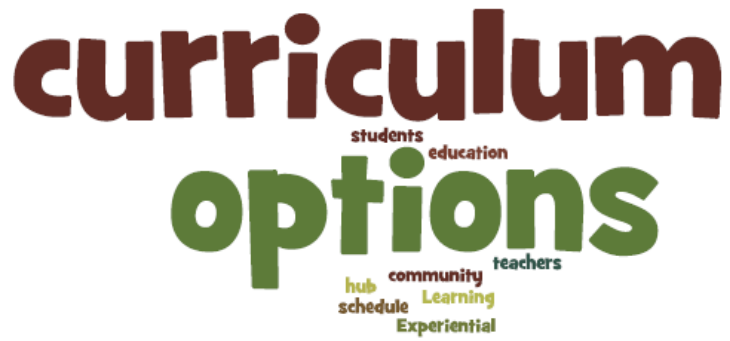
What does an Educational Specification contain?

Definition of the program

Compilation of space

Adjacency concepts

Space requirements



How does an Educational Specification relate to a Facilities Master Plan?



Typically, an Ed Spec follows a FMP

A FMP seeks to comprehensively identify a district's facility needs and prioritizes facility decisions in accordance with the district's vision, mission and goals

An Ed Spec seeks to comprehensively identify a particular facility's needs and prioritizes decisions pertaining to that facility in accordance with the district's FMP

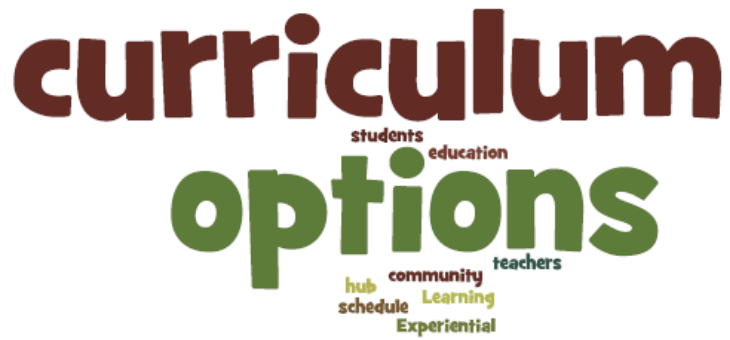


An Ed Spec can be likened to a master plan for one facility



Scope of Work: Based on 2014 Bond

- 1. To accommodate consolidation of Workman and Hutcheson student bodies***
 - Classroom additions***
 - Modifications to core facilities***
- 2. Life cycle and condition improvements***



The *New* Workman

Process Timeline

Event	Date
Staff Interviews	Friday, September 5th
Planning Lab #1: Workman	Tuesday & Wednesday, September 23 & 24
Community Meeting: Workman	Tuesday, October 14th
Planning Lab #2: Workman	Wednesday & Thursday, October 29 & 30
Board Meeting: Workman	Thursday, November 20th

curriculum options

students education
hub community teachers
schedule Learning
Experiential

Staff Interviews



The *New* Workman

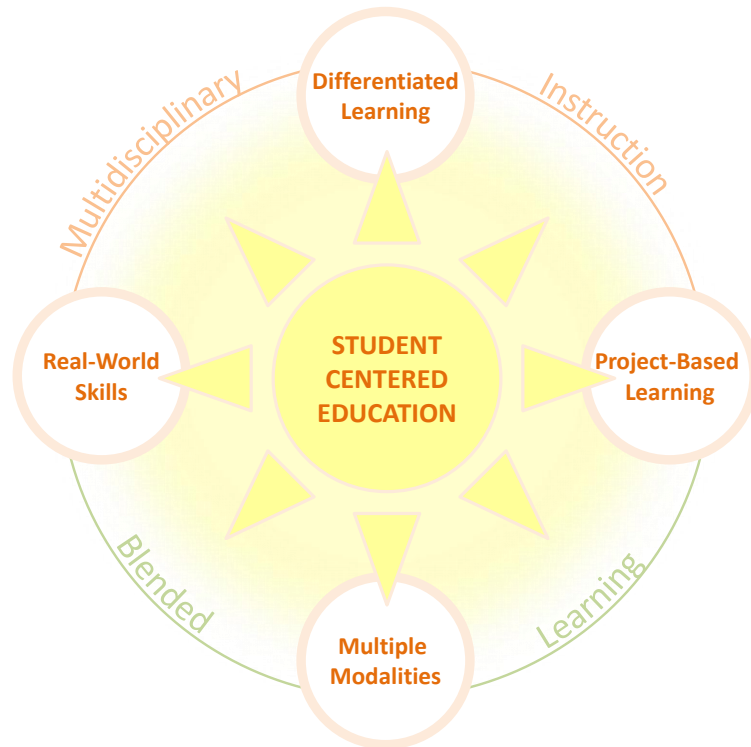
AISD administrators & teachers from Hutcheson and Workman met with DeJONG-RICHTER to:

- Describe their current program;
- Describe how their current facility and spaces support their current program;
- Describe their vision for how their program ought to function in an ideal situation and space.

curriculum options

students education
hub community teachers
schedule Learning
Experiential

Planning Lab #1



The *New* Workman

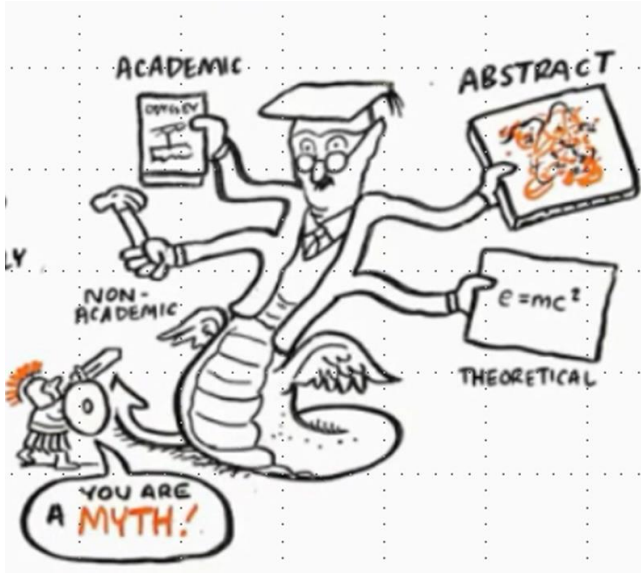
Lab participants (AISD teachers, administrators, parents & students)

- ❑ Went through a Futures Conference exercise to consider challenges and opportunities in K-12 education today
- ❑ Envisioned core elements of the program
- ❑ Came up with a draft vision statement for the new Workman

curriculum options

students education
hub community teachers
schedule Learning
Experiential

Planning Lab #1



The *New* Workman

Core Elements of the Envisioned Program

- Real-World Learning
- Flexible Learning Spaces
- Individualized Student Learning Pathways
- Integrated Student & Family Support & Education
- Integrated Curriculum

curriculum options

students education
hub community teachers
schedule Learning
Experiential

Planning Lab #1



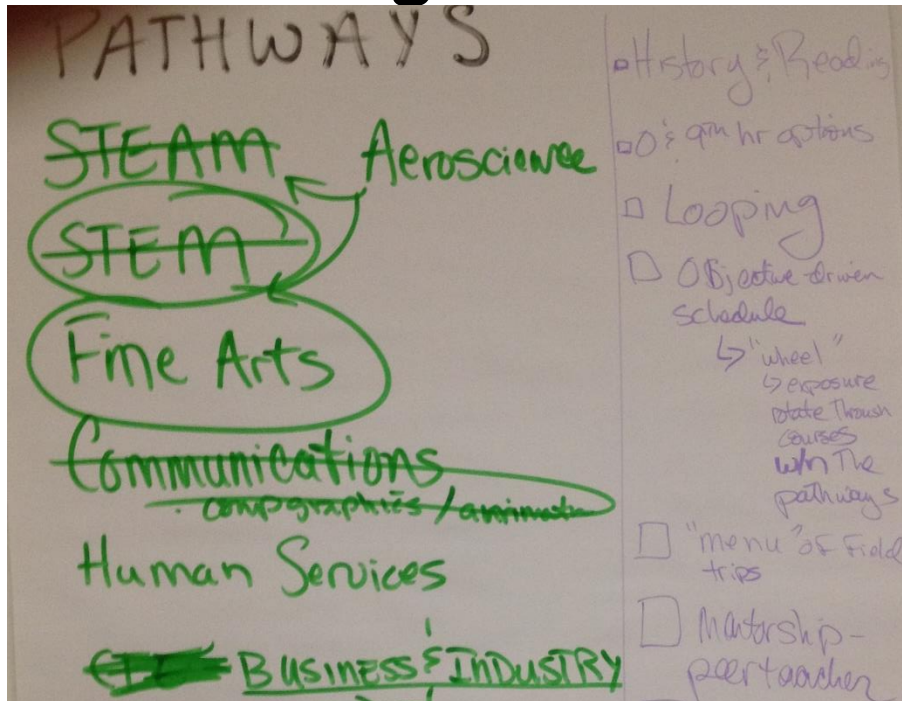
The *New* Workman

Draft Vision Statement

- “Workman will be a **learning hub** for our students, families and community, with **multiple avenues** for our students to connect to defined **learning pathways**, their **teachers** and **professionals** in the local community”

The *New* Workman

Planning Lab #1



Proposed Program Areas

- STEM
- Fine Arts
- Business & Industry



Instructional Programming

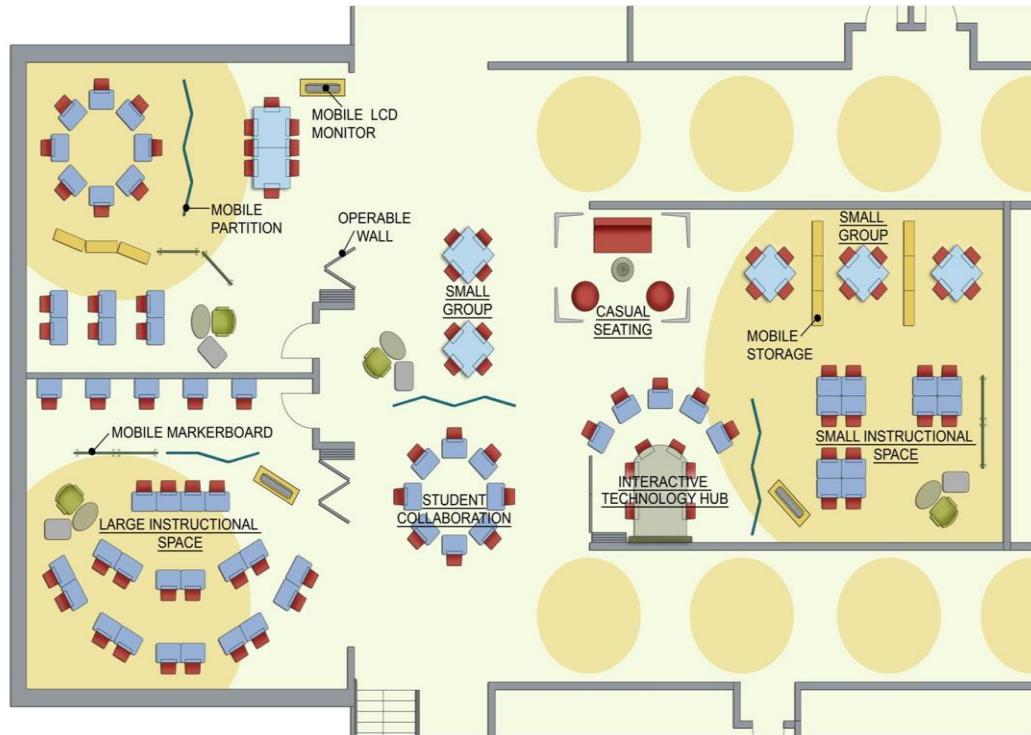
Workman Jr. High School Visionary Recommendations

The *New* Workman

- Dr. Steven Wurtz & Mr. Rick Garcia organized a team of teachers and administrators to use the output of Lab #1's visionary exercises to begin identifying curriculum and program recommendations for the new Workman

- Considerations include:
 - High school coursework
 - Exploration of House Bill 5 endorsements

Planning Lab #1



The *New* Workman

- To support the draft educational vision and program areas, the lab participants provided their first round of edits to the draft Compilation of Space
- Lab members also received a presentation on a variety of spatial arrangements (double-loaded corridor, pods, etc.) and worked in small groups to describe benefits and challenges to each

Community Meetings



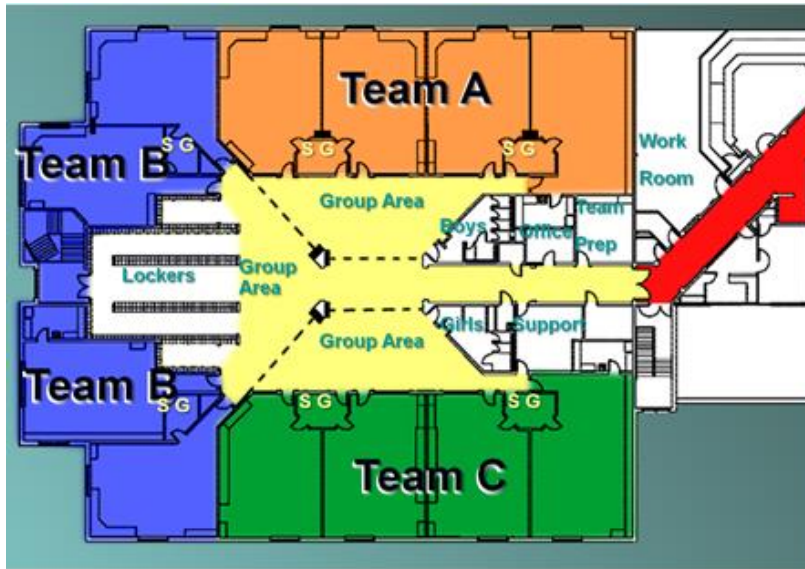
The *New* Workman

- Two meetings were held on October 14th (one @ Workman and one @ Hutcheson)
- Cindy Powell, CFO, introduced each meeting, relating the Ed Spec to the FMP and bond
- DJR facilitated the rest of the meeting, one bilingually, to inform community members of the progress to-date
- DJR also facilitated a Q&A session and distributed a questionnaire

curriculum options

students education teachers
hub community Learning
schedule Experiential

Lab #2



The *New* Workman

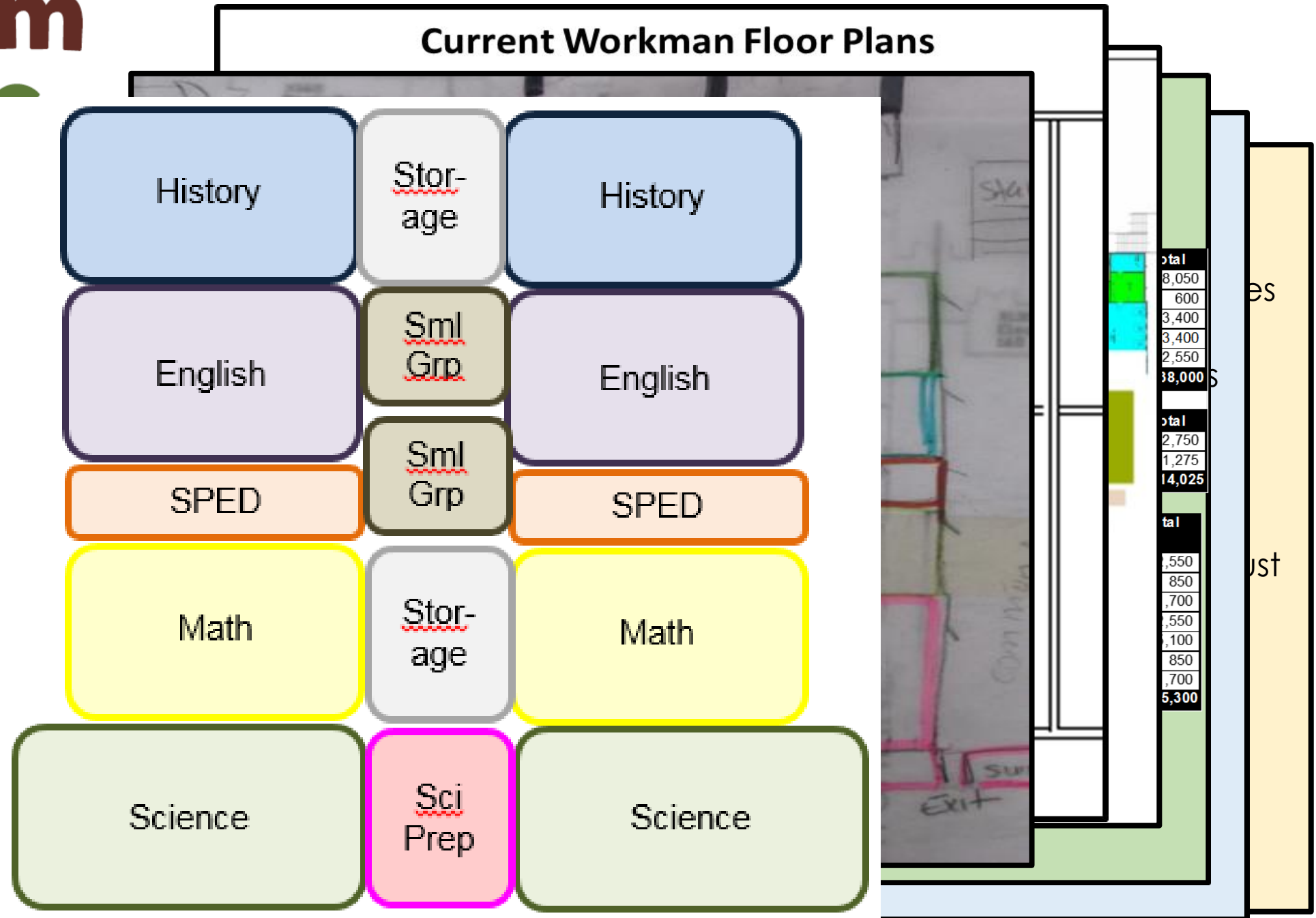
Lab participants reconvened to:

- Review the results from the Community Meeting
- Provide further edits to the COS
- Complete a “space requirements” exercise
- Envision an ideal layout of the facility based on the visioning work in lab #1
- Overlay this ideal layout on the existing floor plan of Workman

curriculum

students education
option
hub community teachers
schedule Learning
Experiential

Lab #2

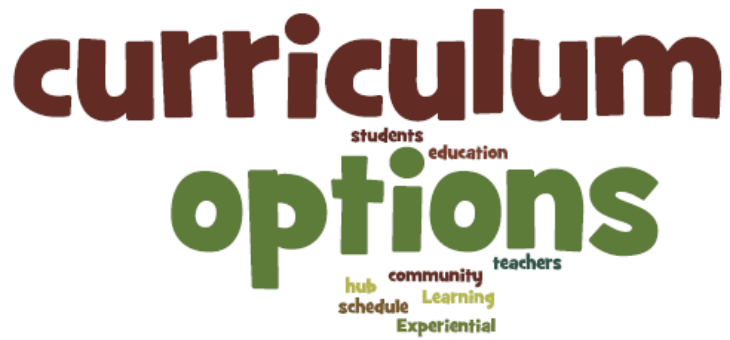




The *New* Workman

Compilation of Space

- The COS lists the desired spaces identified through the Educational Specification process and considers site and budget.
- The COS contains spaces that DJR recommends be added to the facility, while many of the spaces identified can be realized through either renovating existing spaces at Workman or simply repurposing them.



The *New* Workman

Space	Suggested	
	Teaching Stations	Total
Academics: LA, SS, Math, & FL	33	38,000
Science	10	14,025
Career Tech & Electives	15	15,300
Special Education	1	10,625
Visual Arts	2	3,305
Music & Performing Arts	5	31,445
Library / Media Center		3,200
Welcome Center/Administration		6,730
Cafeteria / Food Services		16,500
Gym / Physical Education	4	33,522
Sub Total Programmed Areas		172,652
Building Services, Circulation, Restrooms, etc.	35%	60,428
Total	70	233,080



The *New* Workman

ACADEMIC BALANCE			
	# students in school	Divided by Total SF	SF per student
	1,593	233,080	146.3

CAPACITY CALCULATIONS			
	Students per	Teaching Stations	# Students
Academics: LA, SS, Math, & FL	23	33	759
Science	23	10	230
Career Tech	25	15	375
Special Education	10	1	10
Visual Arts	25	2	50
Performing Arts: Orchestra, Band, & Chorus	50	5	250
Physical Education	50	4	200
	JHS Utilization Factor		85%
			1,874
CAPACITY			1,593



The *New* Workman

Prioritized Additions

DJR recommends prioritizing adding 16 classrooms and related support spaces identified in the process (conference/tutor rooms, teacher workrooms, extended learning areas) along with core modifications.

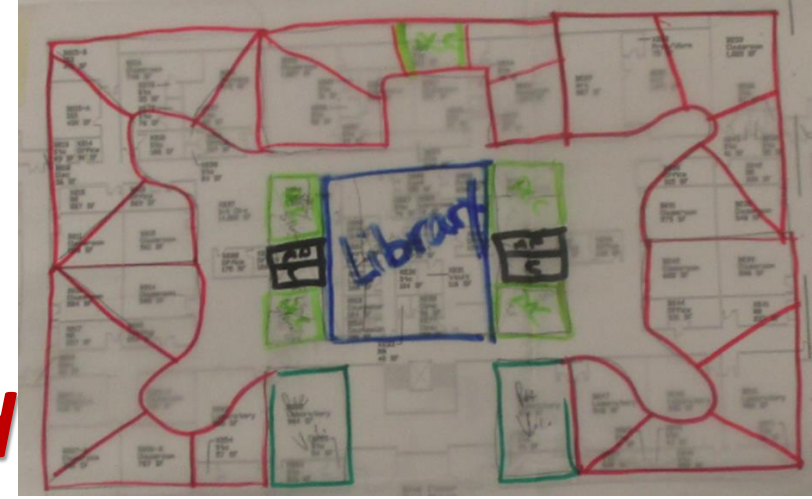
- Addresses capacity needs while providing modernized learning environments
- Depending on the detailed blueprints and budget to follow from BRW Architects, consider prioritizing a new front entrance and administrative suite

curriculum

students education

options

hub community teachers
schedule Learning
Experiential



Scope of Work: Based on 2014 Bond

- ✓ *To accommodate consolidation of Workman and Hutcheson student bodies*
 - ✓ *Classroom additions*
 - ✓ *Modifications to core facilities*
- ✓ *Life cycle and condition improvements*

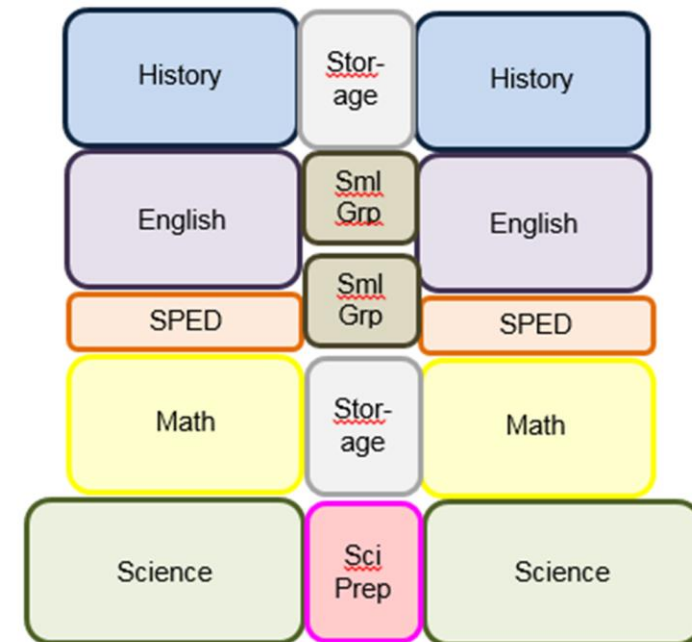
The *New* Workman

Additional Considerations

There may be additional opportunities to re-label some existing classrooms to better fit the adjacency concepts developed in the planning labs.

In addition to the recommendations (classrooms and support spaces), the COS details a variety of spaces—some present at Workman currently, others not present.

There are four categories of such remaining spaces . . .



curriculum



The *New* Workman

- ❑ Spaces currently at Workman, at the recommended size
 - ❑ Example: The auditorium
- ❑ Spaces currently at Workman, not at the recommended size
 - ❑ Example: The library (larger footprint than recommended)
- ❑ Spaces not currently at Workman, but there are existing places for them
 - ❑ Example: The lecture hall
- ❑ Spaces not currently at Workman without existing places for them
 - ❑ Example: TBD based on architectural plans

The *New* Workman

Program Area Descriptions (PAD)

- Purpose, Users, Activities
- Space Requirements
- Example: Extended Learning Areas

Extended Learning Areas
Purpose
Collaborative learning
Users
Teachers
Students
Activities
Collaboration
Projects
Small group work
Adjacencies
Classrooms
Hallways



Extended Learning Areas

Purpose
Collaborative learning
Users
Teachers
Students
Activities
Collaboration
Projects
Small group work
Adjacencies
Classrooms
Hallways

Mechanical
Water fountains
Plumbing
No special requirements
Electrical
110v duplex electrical outlets on each wall, maximum allowable by code
Floor outlets
Lighting
Adjustable lighting
Full spectrum
Dimmer
Multiple switches

Furniture
Tables and chairs
Soft furniture
More fun furniture
Modular couches
Equipment
Printers
Computers
Screen
Casework
No special requirements
Shelving
No special requirements

Doors
To classrooms and open areas
Windows
Window to green space
Translucent to interior
Flooring
Carpet
Springy foam
Walls
No cement or cinder blocks
Modular
Technology
Carts or charging stations
CAT 6 data drops
Ceiling mounted projector
Interactive whiteboards with projectors
One to One devices (iPads for example)
Printers
Telephones
VOIP (Voice Over Internet Protocol)
Wireless connection
Special Considerations
Large enough for multiple classrooms
Outside

Space Requirements

- Example: Extended Learning Areas

curriculum

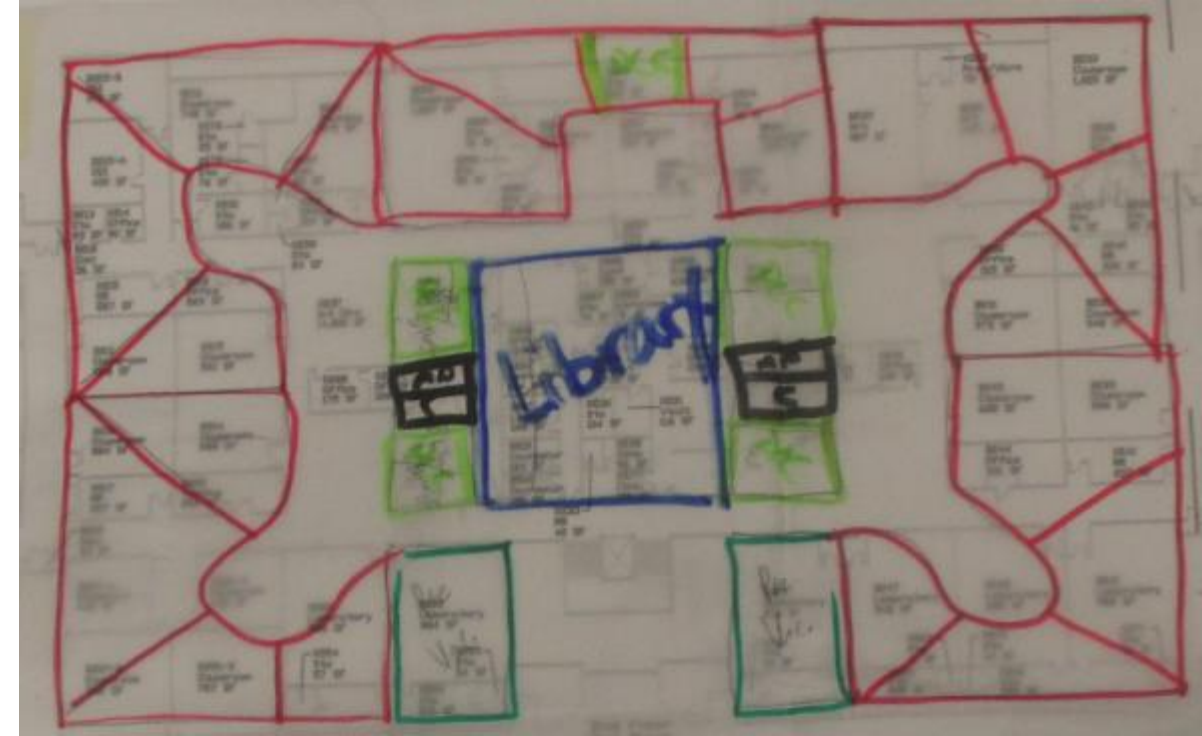
students education

options

hub community teachers
schedule Learning
Experiential

Next Steps

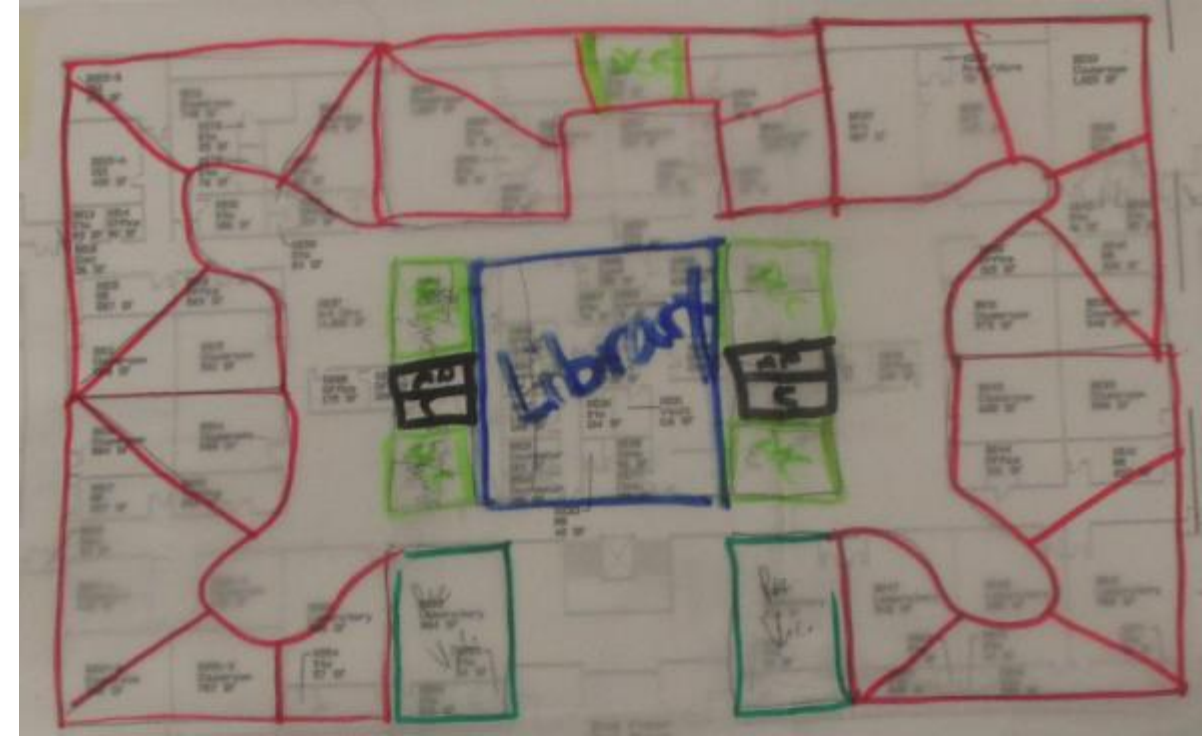
- BRW Architects will review the entire Educational Specification and develop architectural drawings and refined cost estimates that reflect the recommendations
 - Anticipated delivery of schematic design: February 1
- The District will continue work to define the instructional program



curriculum options

students education
hub community teachers
schedule Learning
Experiential

Questions & Comments



The *New* Workman Educational Specifications