

# FACILITIES

## BOND CONSTRUCTION PROJECTS

127

Total construction projects - Phases 1-5

1

Starting Soon

10

Under construction

116

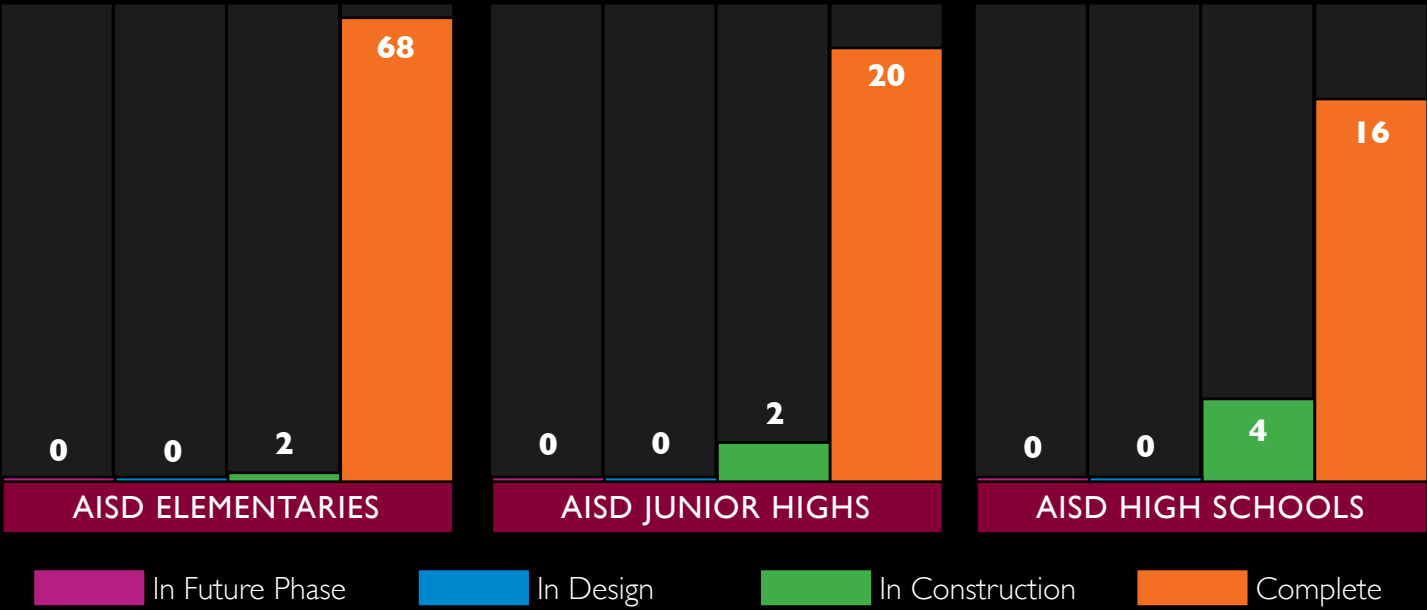
Complete

## UNDER CONSTRUCTION

Arlington College and Career  
High School  
Athletics Complex  
Ditto Elementary  
Fine Arts Center  
Food Service Warehouse  
Lamar High School  
Shackelford Junior High  
Wood Elementary

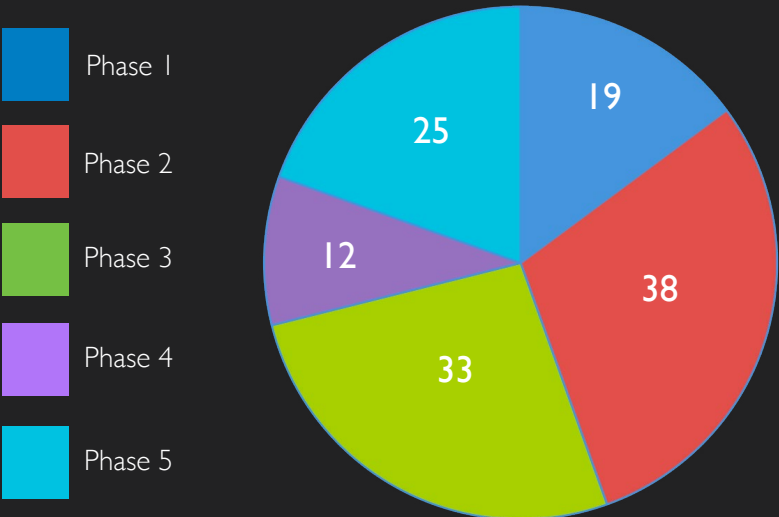
[SEE ALL BOND PROJECTS](#)

## CAMPUS PROJECTS STATUS\*

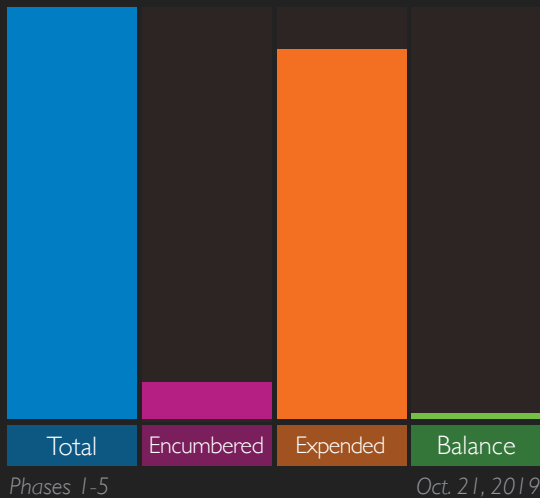


The number of projects is greater than the number of schools as some schools have multiple projects designed and executed at different times.

## BY BOND PHASE



## CONSTRUCTION BOND BUDGET



 FACILITIES

 SEC/TECHNOLOGY

 FINE ARTS

 TRANSPORTATION

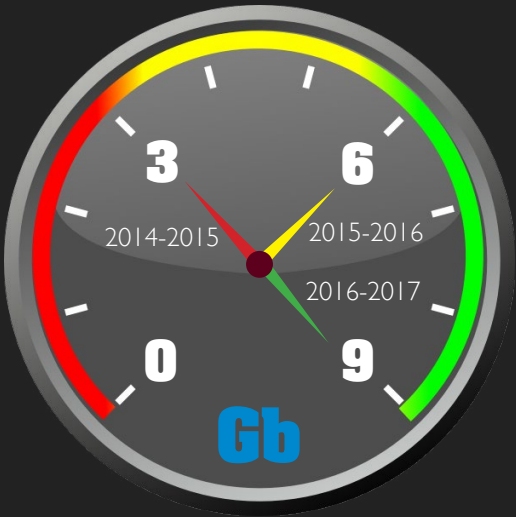


# SECURITY/TECHNOLOGY

## CLASSROOM TECHNOLOGY STANDARDS

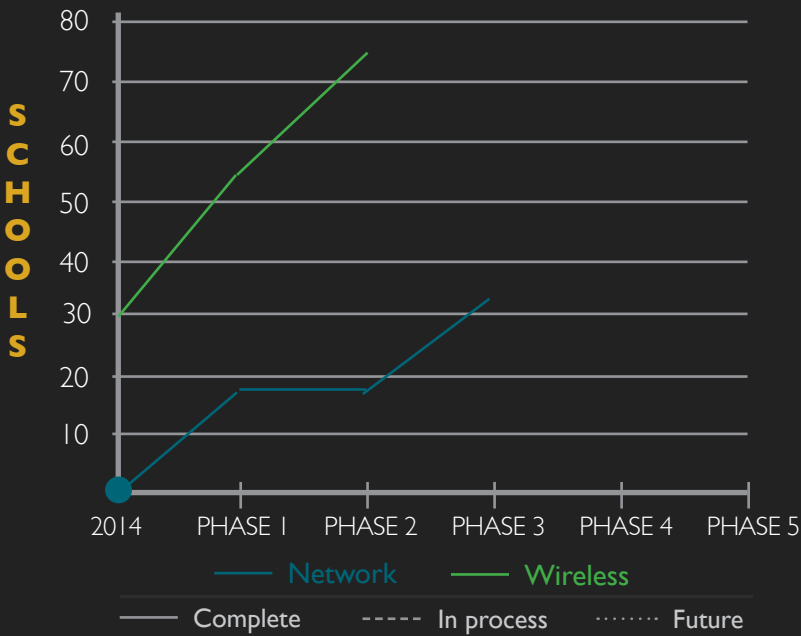
A/V	T	S	L
AUDIO/VISUAL 75/75 schools complete	TEACHER 75/75 schools complete	STUDENT 75/75 schools complete	ELEMENTARY LIBRARY 53/53 schools complete

### DISTRICT BANDWIDTH

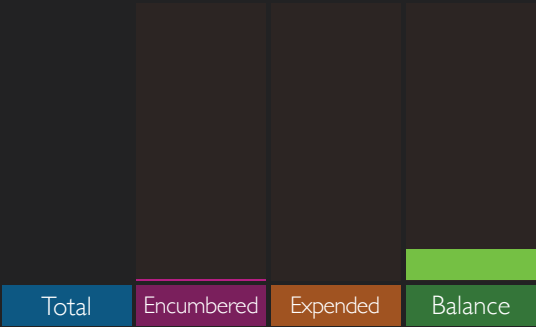


INCREASED 200%  
SINCE THE BOND

### NETWORK/WIRELESS UPGRADES AT EACH SCHOOL



### SECURITY/TECH BOND BUDGET



Phases 1-5

Oct. 21, 2019

### NEW SECURITY CAMERAS AT EACH SCHOOL



# FINE ARTS

## NEW INSTRUMENTS

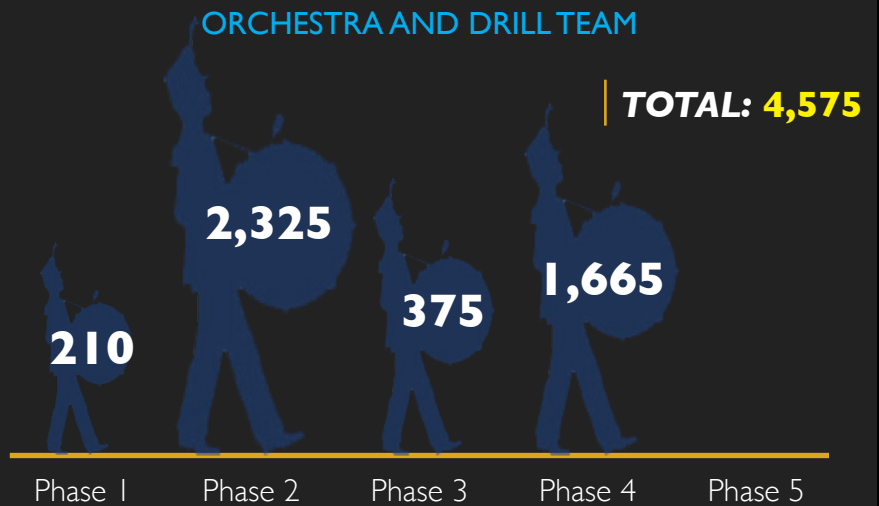


PHASE 1: 1,325  
PHASE 2: 1,386  
PHASE 3: 939  
PHASE 4: 658  
PHASE 5: 449

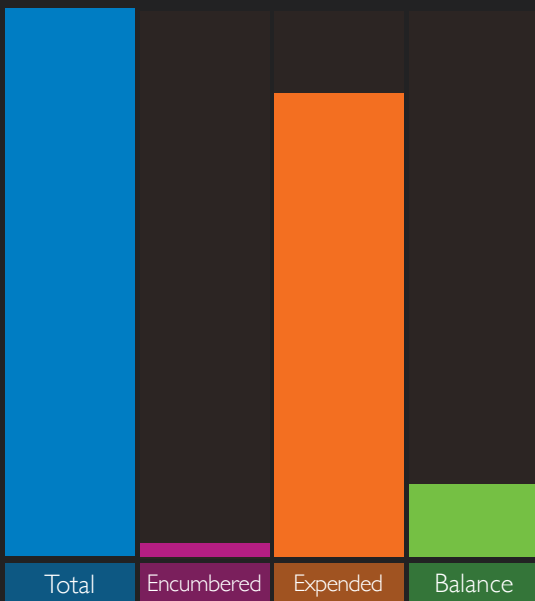
**TOTAL: 4,757**

## NEW UNIFORMS

NEW UNIFORMS FOR BAND, CHOIR,  
ORCHESTRA AND DRILL TEAM



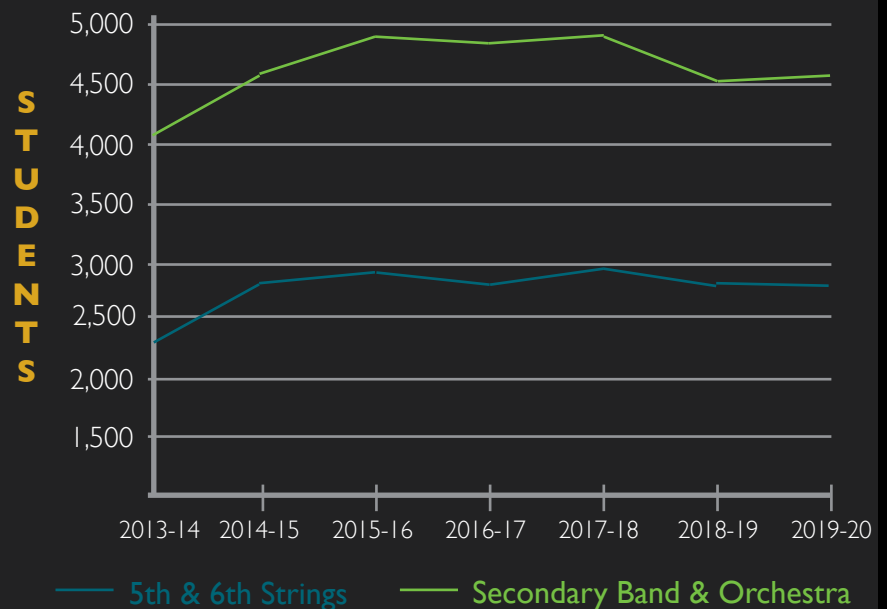
## FINE ARTS BOND BUDGET



Phases 1-5

Oct. 21, 2019

## INSTRUMENTAL MUSIC PARTICIPATION



# TRANSPORTATION

## SCHOOL BUSES



**114**

ordered and delivered

**114**

total new buses in the five-year bond program

NEW SCHOOL BUSES

## WHITE FLEET

**148**

ordered and delivered

**150**

total new service vehicles in the five-year bond program

NEW SERVICE VEHICLES



## ZONAR



IMPLEMENTATION PROCESS

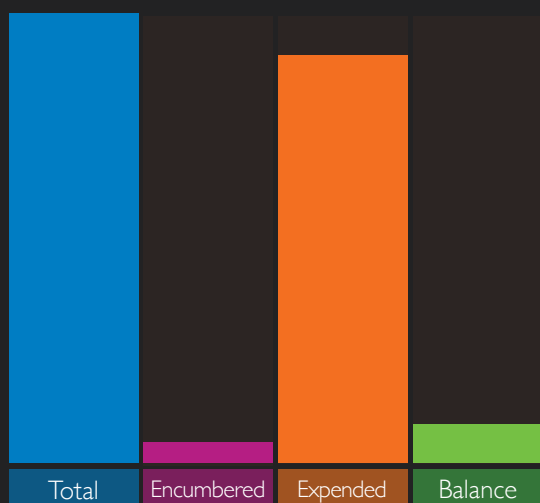
**INSTALL  
ON BUSES**

COMPLETE

**ROLL OUT  
TO STUDENTS**

IN PROCESS

## TRANSPORTATION BOND BUDGET



Phases 1-5

Oct. 21, 2019

## AIISD BUS FLEET

