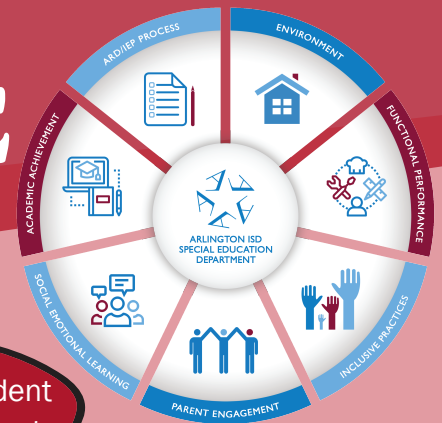


December **BE INCLUSIVE**

Inclusive Schools Week

Brene Brown once said, "Be here. Be you. Belong. This classroom belongs to all of us". This quote beautifully represents the philosophy of inclusion. Every first full week in December we celebrate Inclusive Schools Week. In celebration of this month's theme, below are 6 simple strategies for creating an inclusive school culture that puts students first!



- 1 Communicate a culture and philosophy of inclusion that promotes

**acceptance,
belonging,
and participation**

Don't say,
"special education
student."

Say, "general education
student with special
education support"

Don't say, "This student
needs to do a different
activity."

Say, "How can this student
participate in the activity
with their peers
with support?"

- 2 Include all students in
**learning
together**

- 4 Design
**multi-level lessons
and materials**

for learners with diverse strengths,
abilities and interests.

- Enrich environment with visuals and larger print
- Ask students to interview each other about differences or complete a learning or interest assessment

- 3 Co-plan lessons, attend professional learning together, and model positive working relationships as
**collaborative
teachers**

Don't say,
"I need
you to . . ."

Say, "What might
we do to enhance
the lesson?"

- 5 Partner with
**parents and
community**

- Encourage parents to be members of your school-based action planning team to improve inclusive practices
- Celebrate parents and the community as valued partners in the school

- 6 Consistently implement school-wide
**behavior support
systems**

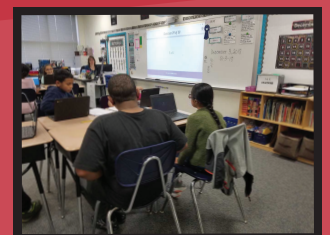
- Develop a greeting routine so ALL students have an opportunity to communicate with each other
- Post, teach, and practice expectations

Six Simple Strategies

AISD Special Education Department

www.aisd.net/sped

Students in Mrs. Miller's
3rd grade math class at
Remynse Elementary in
an inclusive environment.



Credit: AISD CTC Graphic Design 2 Students