

2019 Citizens Bond Oversight Committee

October 25, 2022

# Bond 2019 Package Areas



Facilities	\$852,726,335
Fine Arts	\$6,955,752
Safety, Security and Technology	\$90,829,000
Transportation	\$15,488,913
<b>Total</b>	<b>\$966,000,000</b>

# 2019 Bond Program Project Budgets

Category	Phase I	Phase II	Phase III	Phase IV	Phase V	Total
Facilities	\$ 283,061,922	\$ 168,469,609	\$ 175,241,953	\$ 126,506,495	\$ 99,446,356	\$ 852,726,335
Fine Arts	\$ 1,318,948	\$ 1,290,497	\$ 1,371,770	\$ 1,498,863	\$ 1,475,674	\$ 6,955,752
Technology	\$ 23,173,967	\$ 22,571,317	\$ 18,131,867	\$ 12,067,990	\$ 14,883,859	\$ 90,829,000
Transportation	\$ 3,549,174	\$ 2,082,738	\$ 2,197,538	\$ 3,209,007	\$ 4,450,456	\$ 15,488,913
<b>Total Bond Sale Proceeds</b>	<b>\$ 311,104,011</b>	<b>\$ 194,414,161</b>	<b>\$ 196,943,128</b>	<b>\$ 143,282,355</b>	<b>\$ 120,256,345</b>	<b>\$ 966,000,000</b>



# Bond Program Financial Summary

## (Phases I-III)

	Budget	Encumbered	Expended	Available
Facilities	\$626,773,484	\$67,616,314	\$196,565,887	\$362,591,483
Fine Arts	\$3,981,215	\$2,094,266	\$1,257,544	\$629,405
Technology	\$63,877,151	\$6,242,867	\$37,276,031	\$20,358,253
Transportation	<u>\$7,829,450</u>	<u>\$734,500</u>	<u>\$4,564,728</u>	<u>\$2,530,222</u>
<b>Totals</b>	<b>\$701,724,912</b>	<b>\$76,687,947</b>	<b>\$239,664,190</b>	<b>\$386,106,163</b>
			Bond Issuance Costs	-\$3,302,707
			Interest and Additonal Proceeds	<u>\$5,711,363</u>
			<b>Total Available Funds</b>	<b>\$388,517,819</b>

*Note: Encumbrance, Expense and Interest Data is as of 10.25.2022*

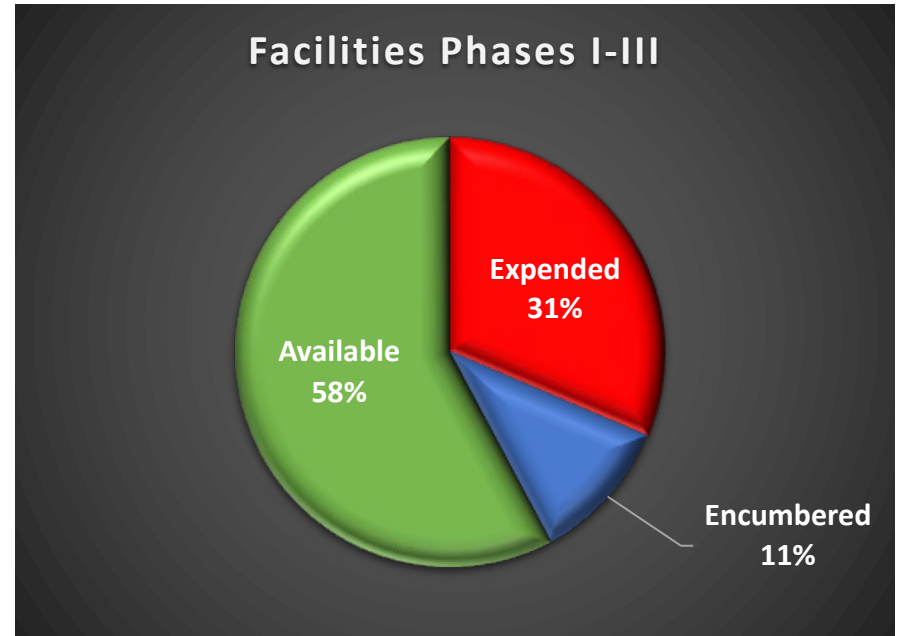


# Facilities

## PHASES I-III

Phase 1	Phase 2	Phase 3	Phase 4	Phase 5	Total
\$283,061,922	\$168,469,609	\$175,241,953	\$126,506,495	\$99,446,356	\$852,726,335

Expended	\$196,565,887
Encumbered	\$67,616,314
Available	\$362,591,283





# Active Projects – by Phase

*(Bond Phases I – III)*

Phase	Number Of Projects
Planning	2
Design	17
Bid	3
Construction	9
Closeout	3
<b>Total Projects</b>	<b>34</b>



# Facilities

## PHASE I PROJECTS

Design	Bidding	Construction	Closeout
	Glaspie Field & Martin HS	Webb ES Thornton ES Berry ES	Gunn JHS and FADL Academy Jones FADL Academy Shackelford JHS



# Facilities – *Webb Elementary School*







# Facilities – *Webb Elementary School*





# Facilities – *Berry Elementary School*





# Facilities – *Berry Elementary School*





# Facilities – *Berry Elementary School*





# Facilities – *Thornton Elementary School*





# Facilities – Thornton Elementary School





# Facilities – Thornton Elementary School





# Facilities

## PHASE II PROJECTS

Design	Bidding	Construction
Duff ES S. Davis ES Atherton ES Foster ES Johns ES Adams ES Hale ES Sam Houston HS Wilemon Field	Bailey JH	Arlington HS Arlington HS FADL Playground Replacements





## Facilities – *Playgrounds*



Wimbish World Language Academy



# Facilities

## PHASE III PROJECTS

---

Planning	Design	Bidding	Construction
Amos ES Goodman ES	Lamar HS Cravens Field Carter JHS Little ES Miller ES Key ES Pope ES Speer ES		Playground Replacements



# Facilities

## PROJECTS CURRENTLY BIDDING / ARCHITECT RFQ

---

CSP#23-08 PH2 – BP3 Bailey JH Additions & Renovations bid on Tuesday, October 18<sup>th</sup>. We are currently evaluating the proposals from the bidders. Prices came in within the budget of \$23,797,223.

CMAR GMP#2 – PH2-BP1 Arlington High School Fine Arts & Dual Language Academy bid on October 19th and the Construction Manager has compiled the subcontractor bids and is working on the Guaranteed Maximum Price now, the budget is \$65,694,138.

CSP#23-09 PH1-BP10 Martin High School and Glaspie Field Additions & Renovations bids on November 10, 2022. The budget is \$35,226,667.

RFQ#23 -03 QUALIFICATIONS FOR: Architectural Professional Services for the 2019 Bond Program Phases IV-V (Supplemental Pool) were received on September 27th and are being reviewed now.



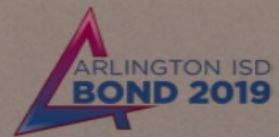
# Facilities – *Bailey Junior High School Addition and Renovation*



2411  
JOE BAILEY  
JUNIOR HIGH SCHOOL

2411  
JOE BAILEY  
JUNIOR HIGH SCHOOL

ADDITION & RENOVATION TO  
**BAILEY JUNIOR HIGH**





# Facilities – *Arlington High School Fine Arts and Dual Language Academy*





# GLASPIE FIELD ATHLETIC COMPLEX





# Facilities

## PHASE IV PROJECTS

---

Pending	
Bowie HS	Farrell ES
Dipert CTC	Fitzgerald ES
Burgin ES	Blanton ES
Morton ES	Butler ES
Wimbish WLA	Sherrod ES
Rankin ES	Turning Point Secondary School
Ditto ES	Hill ES
Dunn ES	Swift ES
Kooken EC	Young JHS
Workman JHS	



# Facilities

## PHASE V PROJECTS

---

Pending		
Seguin HS	Annex IV and V	Ashworth ES
Ousley JHS	Service Center	Pearcy STEM Academy
Ferguson EC	Hilldale Annex	Barnett JHS
Starrett ES	Brown Blvd. Warehouse	Bryant ES
Williams ES	Food Service Warehouse	West ES
PDC	Ag Science Center	Boles JHS
600 New York	Larson ES	Moore ES
Corey FADL Academy	RemyNSE ES	Nichols JHS
Wood ES	Crouch ES	Peach ES
Anderson ES	Patrick ES	Ellis ES





# HUB Participation

## PHASES I-III

Project Description	Budget	Tier II HUB Participation Commitment %	Tier II HUB Participation Amount	Expenses To Date	Tier II % HUB Participation Achieved To Date	Tier II HUB Participation Amount To Date
<b>TOTALS</b>	<b>\$ 221,937,545</b>	<b>25.48%</b>	<b>\$ 56,549,686</b>	<b>\$ 167,015,128</b>	<b>30.56%</b>	<b>\$51,039,823</b>

*Note: Totals above are excerpted from the 10/20/2022 HUB report.*

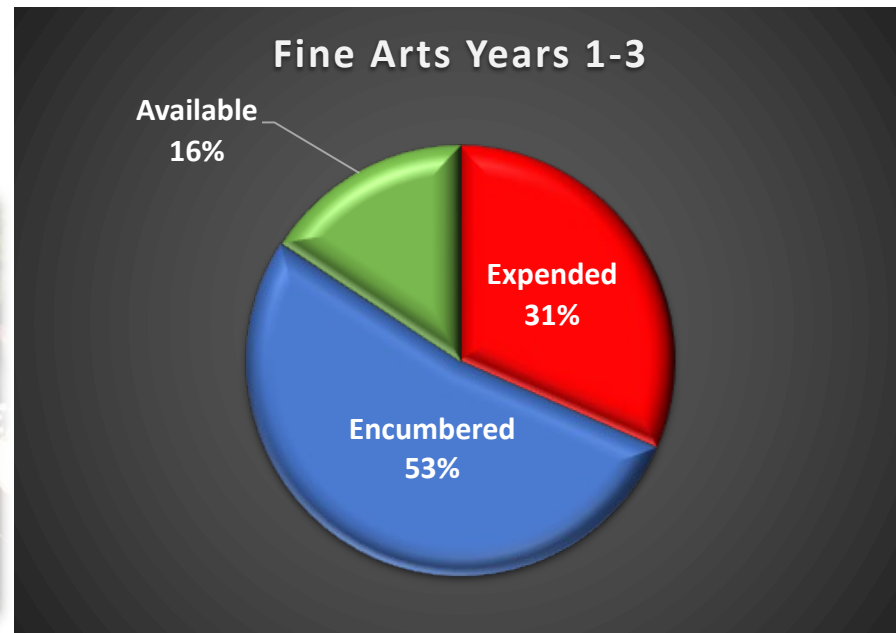


# Fine Arts Budgets

## Years 1-3

Year 1	Year 2	Year 3	Year 4	Year 5	Total
\$1,318,948	\$1,290,497	\$1,371,770	\$1,498,863	\$1,475,674	\$6,955,752

**Expended** \$1,257,544  
**Encumbered** \$2,094,266  
**Available** \$629,405



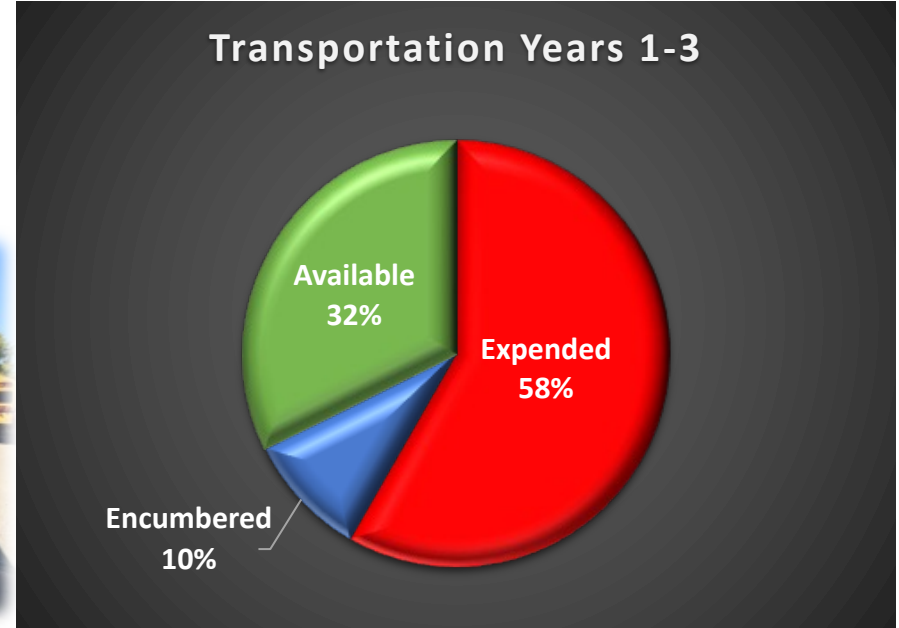


# Transportation

## Years 1-3

Year 1	Year 2	Year 3	Year 4	Year 5	Total
\$3,549,174	\$2,082,738	\$2,197,538	\$3,209,007	\$4,450,456	\$15,488,913

Expended **\$4,564,728**  
Encumbered **\$734,500**  
Available **\$2,530,222**





# Safety, Security & Technology

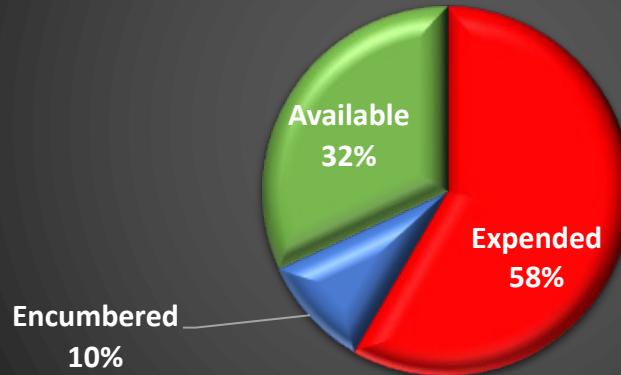
## Years 1-3

Year 1	Year 2	Year 3	Year 4	Year 5	Total
\$23,173,967	\$22,571,317	\$18,131,867	\$12,067,990	\$14,883,859	\$90,829,000

**Expended** \$37,276,031  
**Encumbered** \$6,242,867  
**Available** \$20,358,253

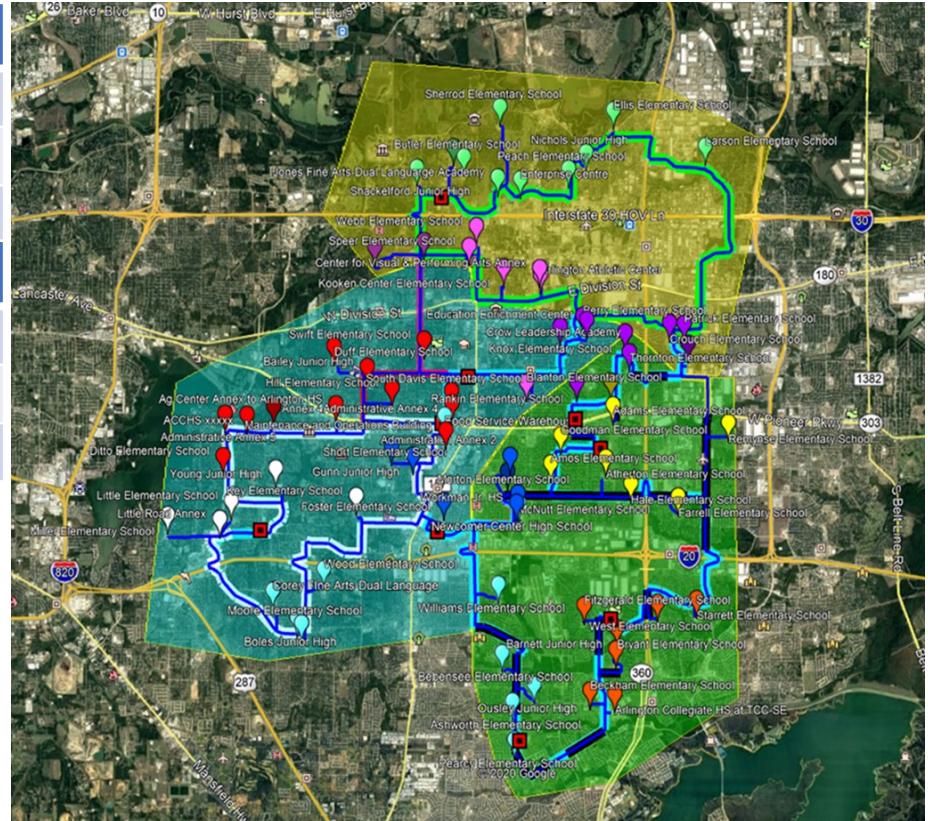


### Safety, Security & Technology Years 1-3



# Fiber Infrastructure Project Status

Backbone (Inner Ring)	% Complete Underground	% Complete Aerial
Phase 1	48%	53%
Phase 2	65%	62%
Phase 3	58%	69%
Lateral Locations	% Complete Underground	% Complete Aerial
Phase 1	79%	98%
Phase 2	87%	69%
Phase 3	3%	11%



# Safety and Security – Video Surveillance Status

Years 1 & 2		Year 3	Years 4 & 5
<ul style="list-style-type: none"> <li>• Sam Houston HS</li> <li>• Bowie HS</li> <li>• Career and Technical Center</li> <li>• Center for Visual and Performing Arts</li> <li>• Athletics Center</li> <li>• Agricultural Center</li> <li>• Turning Point Secondary</li> <li>• Gunn JHS</li> <li>• Boles JHS</li> <li>• Foster ES</li> <li>• Amos ES</li> <li>• Duff ES</li> <li>• Sherrod ES</li> <li>• Moore ES</li> <li>• Bebensee ES</li> <li>• Crow ES</li> <li>• Little ES</li> <li>• Anderson ES</li> <li>• Crouch ES</li> <li>• Remynse ES</li> </ul>	<ul style="list-style-type: none"> <li>• Goodman ES</li> <li>• Jones ES</li> <li>• Ashworth ES</li> <li>• South Davis ES</li> <li>• Short ES</li> <li>• Williams ES</li> <li>• Swift ES</li> <li>• Ditto ES</li> <li>• Adams ES</li> <li>• Atherton ES</li> <li>• Burgin ES</li> <li>• Dunn ES</li> <li>• Ellis ES</li> <li>• Hale ES</li> <li>• Wimbish ES</li> <li>• Pope ES</li> <li>• Rankin ES</li> <li>• Speer ES</li> <li>• Kooken ES</li> <li>• Food Service Center</li> <li>• Administration</li> </ul>	<ul style="list-style-type: none"> <li>• <b>Key ES (In progress)</b></li> <li>• <b>Morton ES (In progress)</b></li> <li>• Arlington HS</li> <li>• Lamar HS</li> <li>• Shackleford JHS</li> <li>• Workman JHS</li> <li>• Butler ES</li> <li>• Corey ES</li> <li>• Ferguson Center</li> <li>• Johns ES</li> <li>• Larson ES</li> <li>• McNutt ES</li> <li>• Blanton ES</li> <li>• Patrick ES</li> <li>• Peach ES</li> <li>• Berry ES (construction)</li> <li>• Webb ES (construction)</li> <li>• Thornton ES (construction)</li> <li>• Bailey JHS (construction)</li> </ul>	<ul style="list-style-type: none"> <li>• Martin HS</li> <li>• Seguin HS</li> <li>• Barnett JHS</li> <li>• Carter JHS (construction)</li> <li>• Nichols JHS</li> <li>• Ousley JHS</li> <li>• Young JHS</li> <li>• Beckham ES</li> <li>• Bryant ES</li> <li>• Farrell ES</li> <li>• Fitzgerald ES</li> <li>• Hill ES</li> <li>• Miller ES</li> <li>• Percy ES</li> <li>• Starrett ES</li> <li>• West ES</li> <li>• Wood ES</li> <li>• ACCHS</li> <li>• Dropout Prevention Center</li> <li>• Professional Development Center</li> <li>• Service Center</li> <li>• Annex IV</li> <li>• Annex V</li> <li>• Hilldale Annex</li> <li>• Nichols Annex</li> <li>• Little Road Annex</li> <li>• JW Counts*</li> </ul>

# Safety and Security – Access Control Status

Year 2	Year 3	Years 4 & 5		
<ul style="list-style-type: none"> <li>• Sam Houston HS</li> <li>• Center for Visual and Performing Arts</li> <li>• Food Services</li> <li>• Administration</li> <li>• Annex IV</li> <li>• Crow ES (new addition)</li> <li>• Athletics Center</li> </ul>	<ul style="list-style-type: none"> <li>• Amos ES</li> <li>• Anderson ES</li> <li>• Peach ES</li> <li>• Gunn JH</li> <li>• Workman JHS</li> <li>• Ashworth ES</li> <li>• Atherton ES</li> <li>• Butler ES</li> <li>• Wimbish ES</li> <li>• Core Academy</li> <li>• Kookan ES</li> <li>• Bebensee ES</li> <li>• Turning Point Secondary</li> <li>• Arlington HS</li> <li>• Lamar HS</li> <li>• Martin HS</li> <li>• Bowie HS</li> <li>• Adams ES</li> <li>• Williams ES</li> </ul>	<ul style="list-style-type: none"> <li>• Seguin HS</li> <li>• Agricultural Center</li> <li>• Career and Technical Center</li> <li>• Ferguson Center</li> <li>• Crow ES (remaining campus)</li> <li>• Sam Houston (Gym A)</li> <li>• Bailey (Construction)</li> <li>• Barnett JHS</li> <li>• Boles JHS</li> <li>• Carter JHS (Construction)</li> <li>• Nichols JHS</li> <li>• Ousley JHS</li> <li>• Shackleford JHS</li> <li>• Young JHS</li> <li>• Patrick ES</li> <li>• Ellis ES</li> <li>• Jones ES</li> <li>• Goodman ES</li> </ul>	<ul style="list-style-type: none"> <li>• Pope ES</li> <li>• Sherrod ES</li> <li>• Speer ES</li> <li>• Swift ES</li> <li>• Blanton ES</li> <li>• Morton ES</li> <li>• Wood ES</li> <li>• Miller ES</li> <li>• Little ES</li> <li>• Ditto ES</li> <li>• ECCHS</li> <li>• Dunn ES</li> <li>• Crouch ES</li> <li>• Johns ES</li> <li>• Rankin ES</li> <li>• Short ES</li> <li>• Beckham ES</li> <li>• Bryant ES</li> <li>• Burgin ES</li> <li>• Duff ES</li> <li>• Farrell ES</li> </ul>	<ul style="list-style-type: none"> <li>• Fitzgerald ES</li> <li>• Foster ES</li> <li>• Hale ES</li> <li>• Hill ES</li> <li>• Key ES</li> <li>• Larson ES</li> <li>• McNutt ES</li> <li>• Moore ES</li> <li>• Percy ES</li> <li>• Remyse ES</li> <li>• South Davis ES</li> <li>• Starrett ES</li> <li>• West ES</li> <li>• Little Rd. Annex</li> <li>• Hilldale Annex</li> <li>• 600 New York</li> <li>• Food Service Warehouse</li> <li>• PDC</li> <li>• Annex V</li> <li>• Service Center (Annex 1,2,3)</li> <li>• JW Counts/ Student Services*</li> </ul>
<p>*on-hold/pending</p>				

# Device Refresh Quantities

Year 1	Year 2	Year 3
<ul style="list-style-type: none"> <li>• Carts – 29</li> <li>• Chromebooks – 12,575</li> <li>• Copiers – 93</li> <li>• Desktop – 2,154</li> <li>• Document Cameras – 4,049</li> <li>• iPad – 3,866</li> <li>• Notebooks – 4,816</li> <li>• Printers – 40</li> <li>• Projectors – 59</li> <li>• Tablets – 5,080</li> </ul>	<ul style="list-style-type: none"> <li>• Carts – 308</li> <li>• Chromebooks – 18,783</li> <li>• Copiers – 28</li> <li>• Desktop – 260</li> <li>• Scanners - 3</li> <li>• iPad – 5,980</li> <li>• Notebooks – 1,107</li> <li>• Printers – 9</li> <li>• Projectors – 114</li> <li>• Tablets – 2</li> </ul>	<ul style="list-style-type: none"> <li>• Calculators – 1,030</li> <li>• Chromebooks – 1,545</li> <li>• iPad – 3,775</li> <li>• Notebooks – 1,308</li> <li>• Printer – 3</li> <li>• Projectors – 4</li> <li>• Tablets - 8</li> </ul>

Student Devices Total	Staff Devices Total
55,722	9,150

Bond Device Refresh Expenditures		
Year 1	Year 2	Year 3
\$16,540,151.38	\$9,813,843.85	\$3,615,170.04



# Device Refresh projected continuation

## Year 3 – Continuation (Projection)

- Chromebooks – 3,785
- Desktops – 326
- Notebooks – 965
- Docking Stations – 1,308
- Projectors – 60

## Year 3 - Bond Device Refresh Expenditure (Projection)

\$1,923,727.41



# *Questions?*

