



**Arlington**

INDEPENDENT SCHOOL DISTRICT

*More Than a Remarkable Education*

# **2019 BOND PROGRAM UPDATE**

*August 15, 2024*



# Bond 2019 Package Areas

Facilities	\$852,726,335
Fine Arts	\$6,955,752
Safety, Security and Technology	\$90,829,000
Transportation	\$15,488,913
<b>Total</b>	<b>\$966,000,000</b>

# Bond Program Financial Summary

*(Phases I-V)*

	Budget	Encumbered	Expended	Available	Remaining
Facilities	\$852,726,335	\$178,514,572	\$390,586,770	\$120,086,293	\$163,538,700
Fine Arts	\$6,955,752	\$264,723	\$4,815,058	\$1,875,971	\$0
Technology	\$90,829,000	\$3,058,420	\$62,866,156	\$24,904,424	\$0
Transportation	\$15,488,913	\$523,014	\$5,695,656	\$9,270,243	\$0
<b>Totals</b>	<b>\$966,000,000</b>	<b>\$182,360,729</b>	<b>\$463,963,640</b>	<b>\$156,136,931</b>	<b>\$163,538,700</b>
			Bond Issuance Costs	-\$4,045,247	
			Interest and Additonal Proceeds	\$41,739,705	
			<b>Total Available Funds</b>	<b>\$193,831,389</b>	

***Note: Totals may not add due to rounding. Information as of August 1, 2024.***



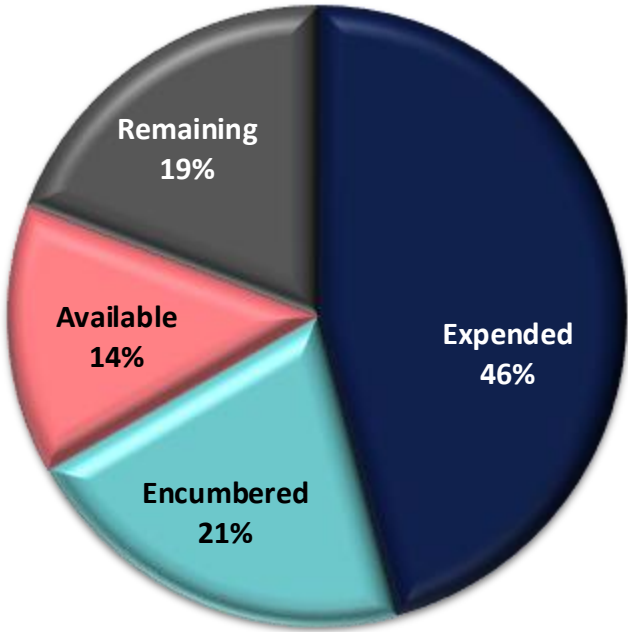
# Facilities

## PHASES I-V

Phase 1	Phase 2	Phase 3	Phase 4	Phase 5	Total
\$283,061,922	\$168,469,609	\$175,241,953	\$62,414,151	\$163,538,700	\$852,726,335

Expended	\$390,586,770
Encumbered	\$178,514,572
Available	\$120,086,293
Remaining	\$163,538,700

Facilities Phases I-V





# Active Projects – by Phase

*(Bond Phases I – V)*

Phase	Number of Projects
Planning	19
Design	6
Bid	2
Construction	18
Closeout	0
<b>Total Projects</b>	<b>45</b>



# Facilities

## PHASE I PROJECTS

Design	Construction	Completed	
Bowie HS – Softball Field	Glaspie Field	Administration Building	Gunn JHS / FADL
Seguin HS – Softball Field	Martin HS	Ashworth ES – Courtyard Concrete	Johns ES – Courtyard Concrete
		Berry ES	Jones FADL Academy
		Crow Leadership Academy	Playgrounds – Phase I
		District-Wide Bottle Fillers	Shackelford JHS
		Ditto ES – Chiller Replacement	Thornton ES
		Food and Nutrition Service Ctr.	Webb ES



# Facilities – *Glaspie Field Rendering*



ARLINGTON INDEPENDENT SCHOOL DISTRICT





# Facilities – *Glaspie Field Construction*







# Facilities

## PHASE II PROJECTS

Design	Construction		Completed
Wilemon Field	Arlington HS	Atherton ES	Adams ES
	Arlington HS FADL	Foster ES	Hale ES
	Bailey JHS	Johns ES	Playgrounds – Phase II
	Duff ES	Sam Houston HS	Bowie HS – Football Field and Track Resurfacing
	So. Davis ES		Seguin HS – Football Field and Track Resurfacing

# Facilities – *Arlington HS Fine Arts & Dual Language Academy Rendering*



ARLINGTON INDEPENDENT SCHOOL DISTRICT



VLK|ARCHITECTS



# Facilities – *Arlington HS Fine Arts & Dual Language Academy Rendering*





# Facilities – *Arlington HS Fine Arts & Dual Language Academy Rendering*



ARLINGTON INDEPENDENT SCHOOL DISTRICT



VLK|ARCHITECTS



# Facilities – *Arlington High School Fine Arts & Dual Language Academy*





# Facilities – *Arlington High School Fine Arts & Dual Language Academy*



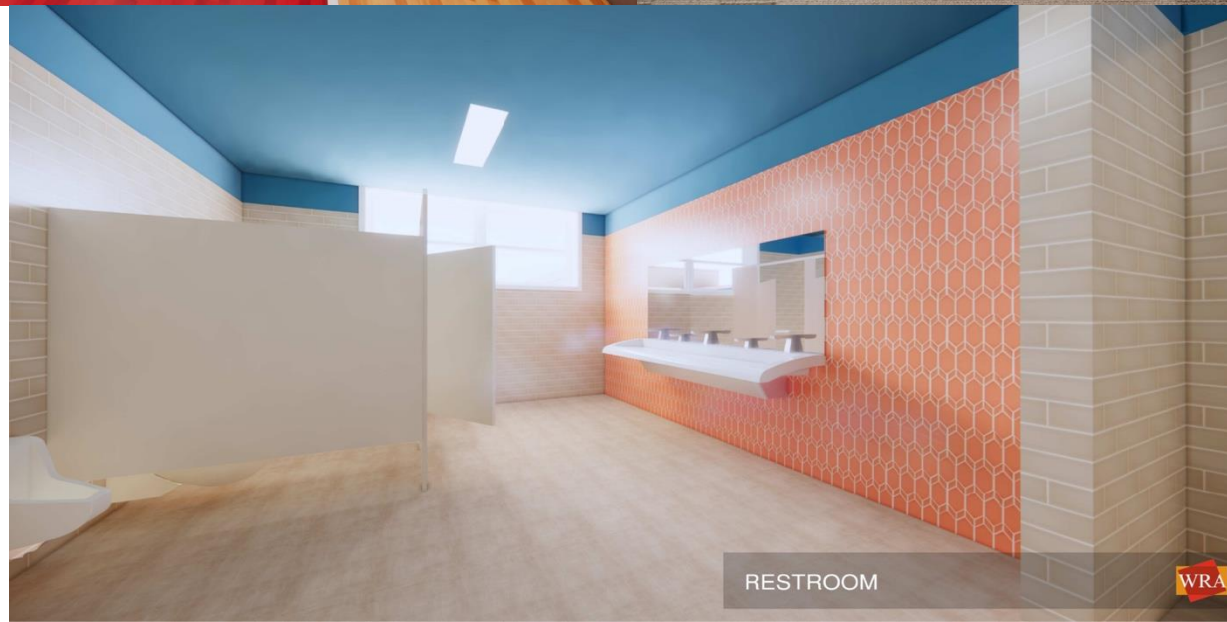


# Facilities – *Arlington High School Softball Field*





# Facilities – *Duff Elementary School Renderings*





# Facilities – *Duff Elementary School Addition and Renovations*



Gymnasium Addition



Library Renovations



# Facilities – *Bowie and Seguin Track and Fields*



Bowie High School



Seguin High School



# Facilities – *Sam Houston High School*



Sam Houston library



Sam Houston roof



# Facilities – *Bailey Junior High School Rendering*

ARLINGTON INDEPENDENT SCHOOL DISTRICT





# Facilities – *Bailey Junior High School Addition and Renovations*



Administration / Classroom Addition



# Facilities – *Bailey Junior High School Addition and Renovations*



Cafeteria Renovation



Kitchen Addition





# Facilities

## PHASE III PROJECTS

Design	Bidding	Construction	Completed
Lamar HS Cravens Field	Amos ES Goodman ES	Short ES New Replacement JHS Little ES Miller ES Key ES Pope ES Speer ES	Anderson ES Playgrounds – Phase III



# Facilities – *Joey Rodriguez Junior High School Rendering*







# Facilities – *Joey Rodriguez Junior High School*





# Facilities – *Elementary School Additions and Renovations*



Key Elementary



Johns Elementary





# Facilities

## PHASE IV PROJECTS

---

Planning		Design
Bowie HS	Farrell ES	Service Center – Security / Transportation
Dipert CTC	Fitzgerald ES	
Burgin ES	Blanton ES	
Morton ES	Butler ES	
Wimbish WLA	Sherrod ES	
Rankin ES	Turning Point Secondary School	
Ditto ES	Hill ES	
Dunn ES	Swift ES	
Kooken EC	Young JHS	
Workman JHS		





# Facilities

## PHASE V PROJECTS

---

Pending		
Seguin HS	Annex IV and V	Pearcy STEM Academy
Ousley JHS	Hilldale Annex	Barnett JHS
Ferguson EC	Brown Blvd. Warehouse	Bryant ES
Starrett ES	Food Service Warehouse	West ES
Williams ES	Ag Science Center	Boles JHS
PDC	Larson ES	Moore ES
600 New York	Remyanse ES	Nichols JHS
Corey FADL Academy	Crouch ES	Peach ES
Wood ES	Patrick ES	Ellis ES
Anderson ES	Ashworth ES	



# HUB Participation

## PHASES I-IV

Project Description	Budget	Tier II HUB Participation Commitment %	Tier II HUB Participation Amount	Expenses To Date	Tier II % HUB Participation Achieved To Date	Tier II HUB Participation Amount To Date
2019 BOND PROGRAM HUB TOTALS	\$ 484,536,772	24.01%	\$ 116,349,178	\$ 305,274,325	26.81%	\$ 81,839,348

*Note: Totals above are excerpted from the 8/01/2024 HUB report*





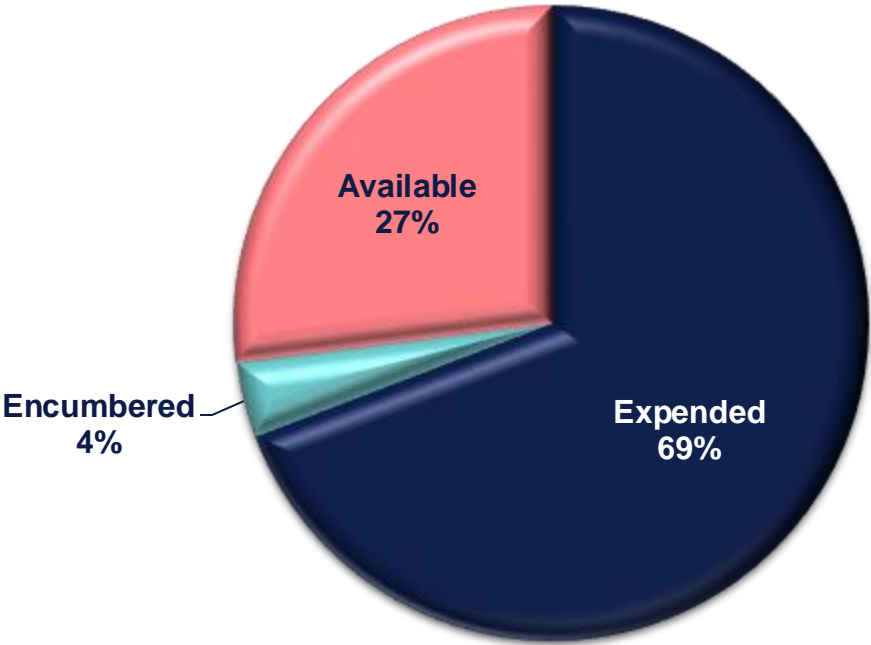
# Fine Arts Budgets

## Years 1 - 5

Year 1	Year 2	Year 3	Year 4	Year 5	Total
\$1,318,948	\$1,290,497	\$1,371,770	\$1,498,863	\$1,475,674	\$6,955,752

Expended \$4,815,058  
Encumbered \$264,723  
Available \$1,875,971  
Remaining \$0

Fine Arts Years 1-5





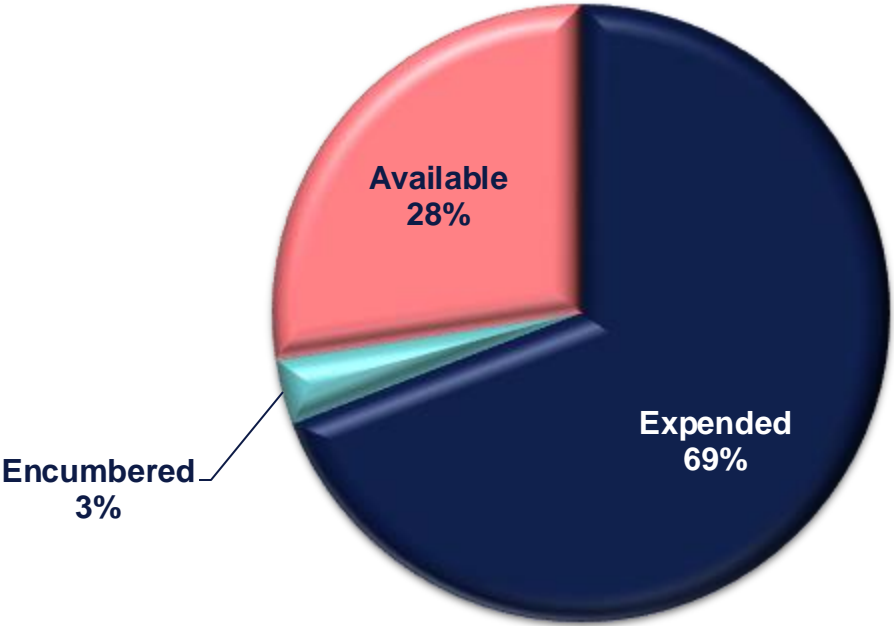
# Safety, Security & Technology

## Years 1 - 5

Year 1	Year 2	Year 3	Year 4	Year 5	Total
\$23,173,967	\$22,571,317	\$18,131,867	\$12,067,990	\$14,883,859	\$90,829,000

Expended	\$62,866,156
Encumbered	\$3,058,420
Available	\$24,904,424
Remaining	\$0

Safety, Security & Technology  
Years 1-5







# Transportation

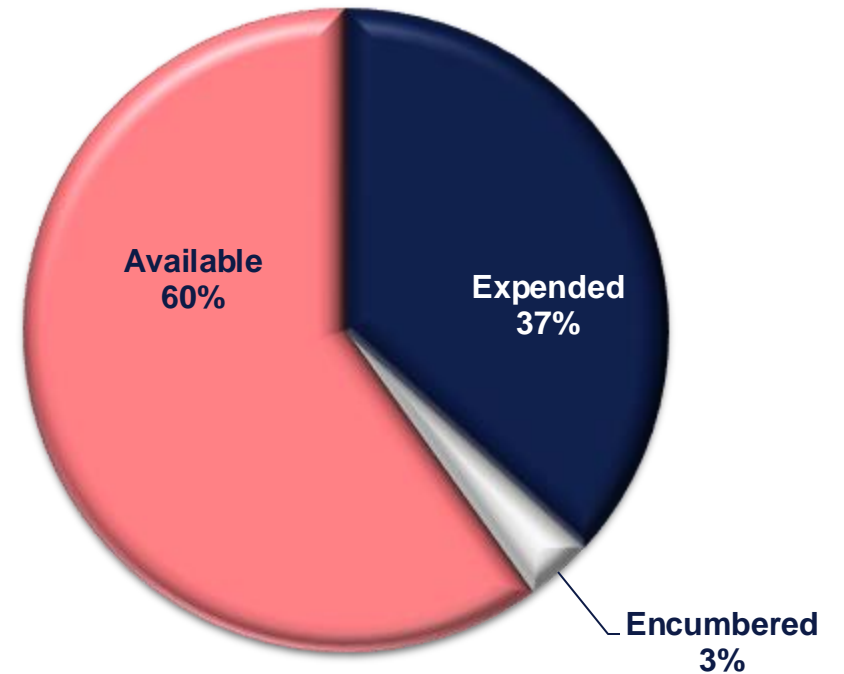
## Years 1 - 5

Year 1	Year 2	Year 3	Year 4	Year 5	Total
\$3,549,174	\$2,082,738	\$2,197,538	\$3,209,007	\$4,450,456	\$15,488,913

Expended \$5,695,656  
Encumbered \$523,014  
Available \$9,270,243  
Remaining \$0



Transportation Years 1-5



# QUESTIONS?

