



Arlington

INDEPENDENT SCHOOL DISTRICT

More Than a Remarkable Education

2019 BOND UPDATE REPORT

November 7, 2024



Bond 2019 Package Areas

Facilities	\$852,726,335
Fine Arts	\$6,955,752
Safety, Security and Technology	\$90,829,000
Transportation	\$15,488,913
Total	\$966,000,000

Bond Program Financial Summary

(Phases I-V)

	Budget	Encumbered	Expended	Available	Remaining
Facilities	\$852,726,335	\$138,655,135	\$433,013,551	\$117,518,949	\$163,538,700
Fine Arts	\$6,955,752	\$191,164	\$4,906,250	\$1,858,338	\$0
Technology	\$90,829,000	\$2,319,908	\$66,607,787	\$21,901,305	\$0
Transportation	\$15,488,913	\$62,840	\$6,054,769	\$9,371,304	\$0
Totals	\$966,000,000	\$141,229,047	\$510,582,357	\$150,649,896	\$163,538,700
			Bond Issuance Costs	-\$4,045,247	
			Interest and Additional Proceeds	\$45,789,667	
			Total Available Funds	\$192,394,317	

Note: Totals may not add due to rounding. Information as of October 28, 2024.



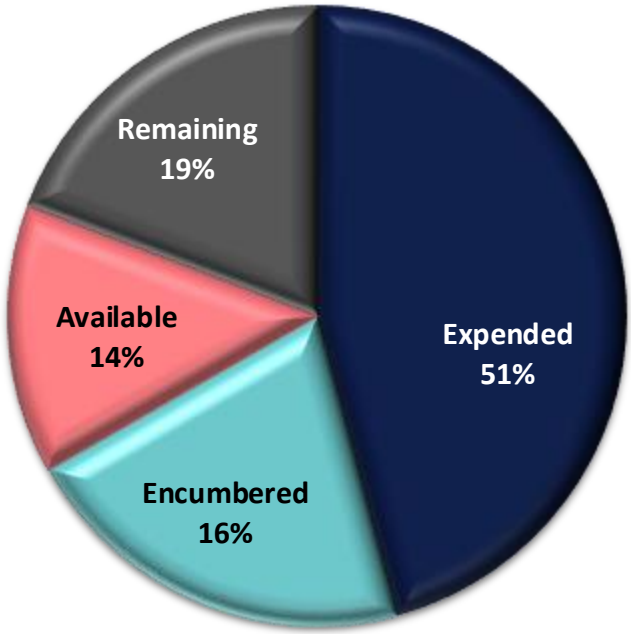
Facilities

PHASES I-V

Phase 1	Phase 2	Phase 3	Phase 4	Phase 5	Total
\$283,061,922	\$168,469,609	\$175,241,953	\$62,414,151	\$163,538,700	\$852,726,335

Expended	\$433,013,551
Encumbered	\$138,655,135
Available	\$117,518,949
Remaining	\$163,538,700

Facilities Phases I-V





Active Projects – by Phase

(Bond Phases I – V)

Phase	Number of Projects
Planning	36
Design	5
Bid	5
Construction	24
Closeout	3
Total Projects	73



Facilities

PHASE I PROJECTS

Design	Construction	Completed	
Bowie HS – Softball Field	Glaspie Field	Administration Building	Gunn JHS / FADL
Seguin HS – Softball Field	Martin HS	Ashworth ES – Courtyard Concrete	Johns ES – Courtyard Concrete
		Berry ES	Jones FADL Academy
		Crow Leadership Academy	Playgrounds – Phase I
		District-Wide Bottle Fillers	Shackelford JHS
		Ditto ES – Chiller Replacement	Thornton ES
		Food and Nutrition Service Ctr.	Webb ES

Facilities – *Glaspie Field Rendering*



Facilities – *Glaspie Field Construction*





Facilities

PHASE II PROJECTS

Bidding	Construction	Closeout	Completed
Wilemon Field	Arlington HS Arlington HS FADL Bailey JHS Duff ES Atherton ES Foster ES Johns ES Sam Houston HS	Playground Equipment – Phase II	Playground Sitework – Phase II Adams ES Hale ES So. Davis ES Bowie HS – Football Field and Track Resurfacing Seguin HS – Football Field and Track Resurfacing

Facilities – *Arlington HS Fine Arts & Dual Language Academy Rendering*

ARLINGTON INDEPENDENT SCHOOL DISTRICT



Facilities – *Arlington HS Fine Arts & Dual Language Academy Rendering*

ARLINGTON INDEPENDENT SCHOOL DISTRICT



Facilities – *Arlington HS Fine Arts & Dual Language Academy Rendering*

ARLINGTON INDEPENDENT SCHOOL DISTRICT



Facilities – *Arlington High School Fine Arts & Dual Language Academy*



Facilities – *Arlington High School Fine Arts & Dual Language Academy*



Facilities – *Arlington High School Fine Arts & Dual Language Academy*



Facilities – *Arlington High School Fine Arts & Dual Language Academy*



Facilities – *Arlington High School Softball Field*



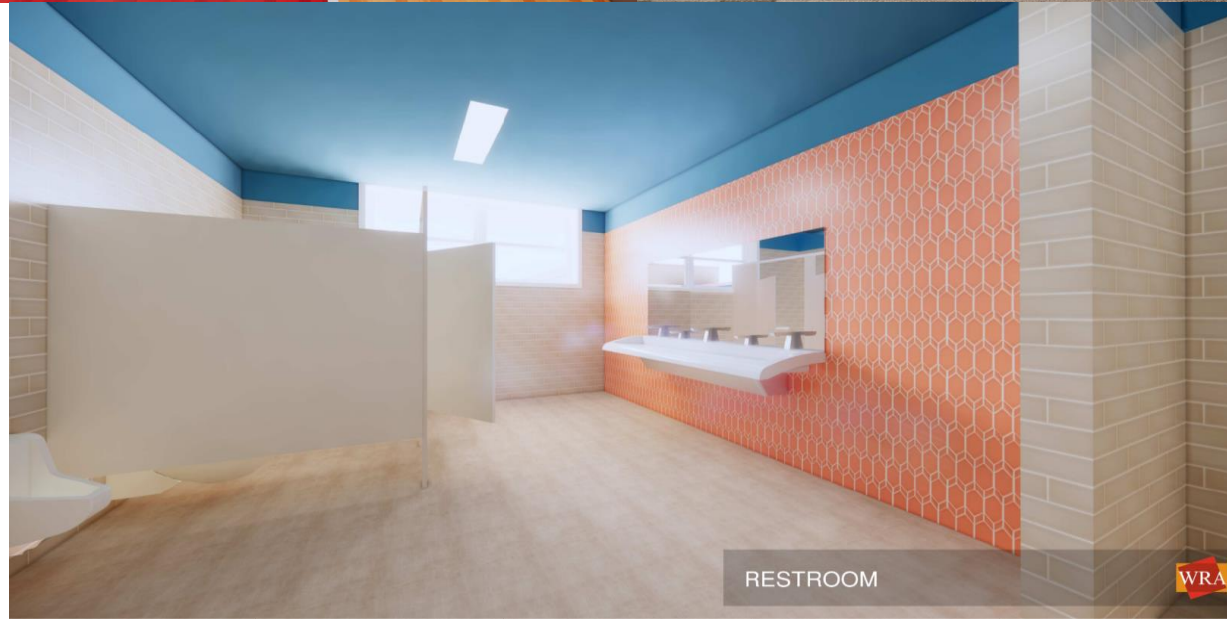
Facilities – *Duff Elementary School Renderings*



GYMNASIUM



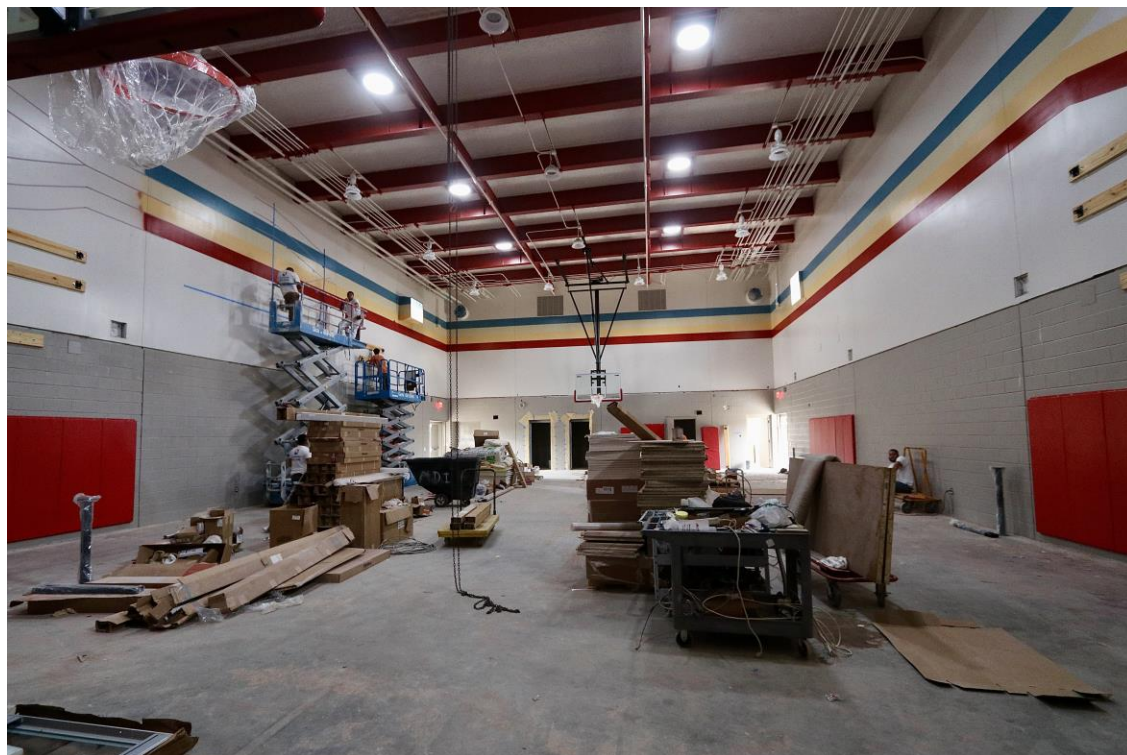
LIBRARY



RESTROOM



Facilities – *Duff Elementary School Addition and Renovations*



Gymnasium Addition



Library Renovations

Facilities – *Bowie and Seguin Track and Fields*



Bowie High School



Seguin High School

Facilities – *Bailey Junior High School Rendering*



Facilities – *Bailey Junior High School Addition and Renovations*



Administration / Classroom Addition

Facilities – *Bailey Junior High School Addition and Renovations*



Cafeteria Renovation



Kitchen Addition



Facilities

PHASE III PROJECTS

Bidding	Construction	Closeout	Completed
Amos ES Goodman ES Lamar HS Cravens Field	Rodriguez JHS Little ES Miller ES Key ES Pope ES Speer ES	Short ES Playground Equipment – Phase III	Anderson ES Playground Sitework – Phase III

Facilities – *Joey Rodriguez Junior High School Rendering*





Facilities – *Joey Rodriguez Junior High School*



Facilities – *Elementary School Additions and Renovations*



Pope Elementary



Johns Elementary



Facilities

PHASE IV PROJECTS

Planning		Design	Bidding	Construction
Bowie HS	Farrell ES	Dipert CTC		Fitzgerald ES
Burgin ES	Blanton ES	Service Ctr. – Security, Transportation & Health		
Morton ES	Butler ES			
Wimbish WLA	Sherrod ES			
Rankin ES	Turning Point Secondary School			
Ditto ES	Hill ES			
Dunn ES	Swift ES			
Kookan EC	Young JHS			
Workman JHS				



Facilities

PHASE V PROJECTS

Planning		Construction	Completed
Ag Science Center	Nichols JHS	Annex IV and V	Anderson ES
Barnett JHS	Patrick ES	Ferguson EC	Ashworth ES
Boles JHS	Peach ES	Hilldale Annex	Brown Blvd. Warehouse
Bryant ES	Pearcy STEM Academy	Ousley JHS	
Corey FADL Academy	Remyense ES	PDC	
Crouch ES	Seguin HS	West ES	
Ellis ES	Starrett ES	600 New York	
Food Service Warehouse	Williams ES		
Larson ES	Wood ES		
Moore ES			



HUB Participation

PHASES I-V

Project Description	Budget	Tier II HUB Participation Commitment %	Tier II HUB Participation Amount	Expenses To Date	Tier II % HUB Participation Achieved To Date	Tier II HUB Participation Amount To Date
2019 BOND PROGRAM PHASES I-V HUB TOTALS	\$ 504,908,573	23.80%	\$ 120,176,198	\$ 361,372,366	25.89%	\$ 93,541,866

Note: Totals above are excerpted from the 10/28/2024 HUB report



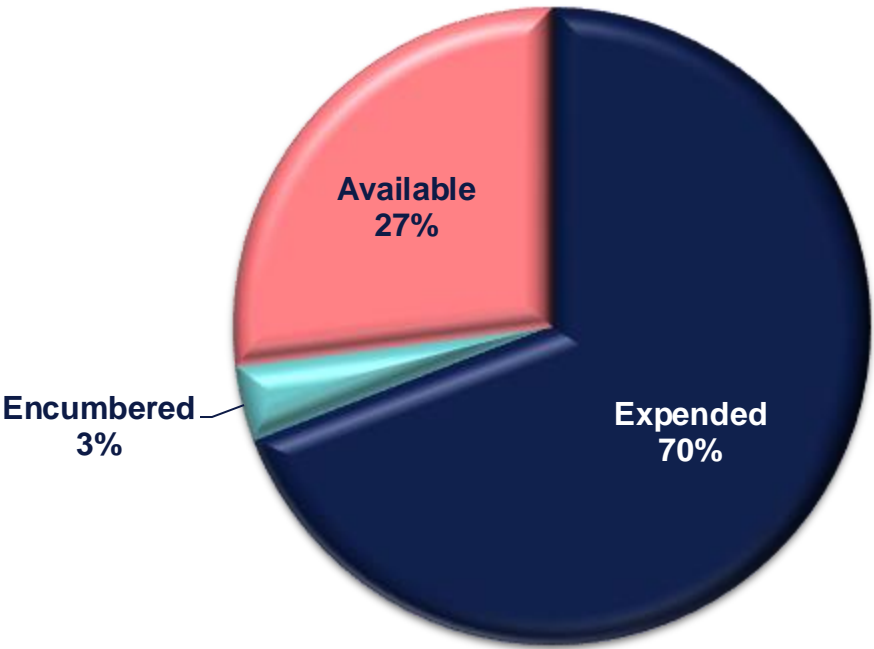
Fine Arts Budgets

Years 1 - 5

Year 1	Year 2	Year 3	Year 4	Year 5	Total
\$1,318,948	\$1,290,497	\$1,371,770	\$1,498,863	\$1,475,674	\$6,955,752

Expended \$4,906,250
Encumbered \$191,164
Available \$1,858,338
Remaining \$0

Fine Arts Years 1-5





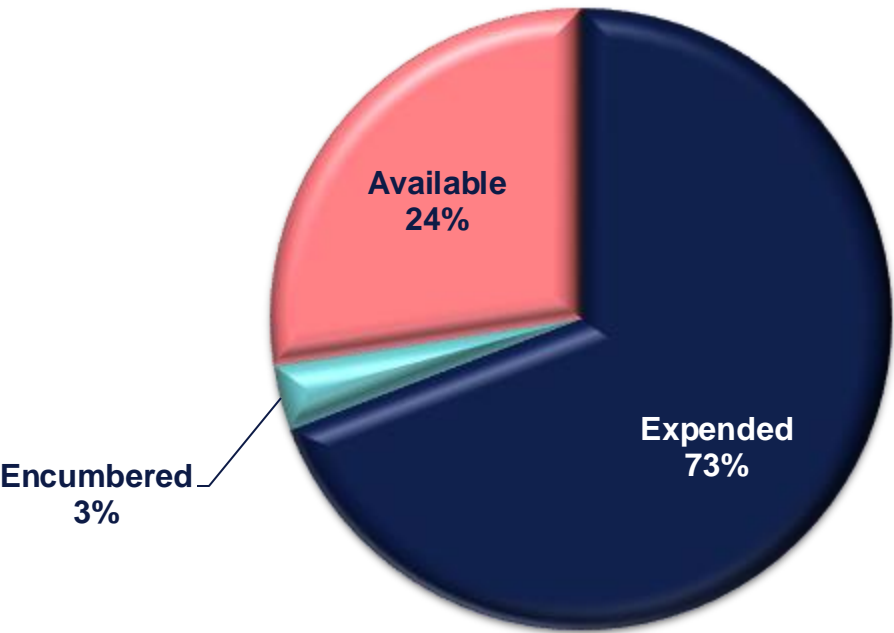
Safety, Security & Technology

Years 1 - 5

Year 1	Year 2	Year 3	Year 4	Year 5	Total
\$23,173,967	\$22,571,317	\$18,131,867	\$12,067,990	\$14,883,859	\$90,829,000

Expended \$66,607,787
Encumbered \$2,319,908
Available \$21,901,305
Remaining \$0

Safety, Security & Technology
Years 1-5





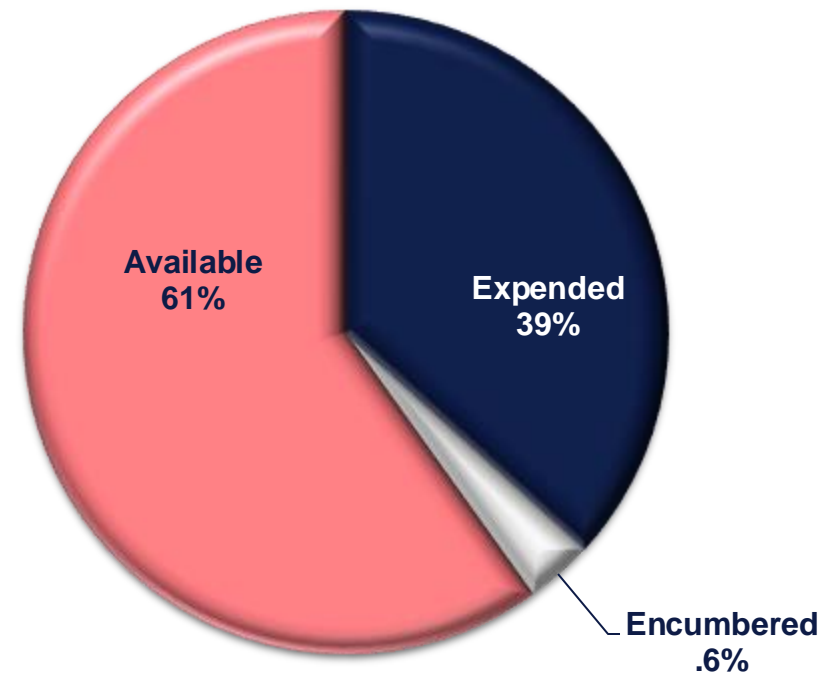
Transportation

Years 1 - 5

Year 1	Year 2	Year 3	Year 4	Year 5	Total
\$3,549,174	\$2,082,738	\$2,197,538	\$3,209,007	\$4,450,456	\$15,488,913

Expended \$6,054,769
Encumbered \$62,840
Available \$9,371,304
Remaining \$0

Transportation Years 1-5



Discussion

