



ARLINGTON INDEPENDENT  
SCHOOL DISTRICT

**New Thornton  
Elementary  
School**



Corgan

# Project Design Team



**SUSAN SMITH**  
Education Studio Principal



**BEVERLY FORNOF**  
Project Manager



**MORGAN HOWELL**  
Architect



**RYAN CONNELL**  
Studio Design Director



**JASON MELLARD**  
Project Design Manager



**DENNINE JO**  
Interior Designer

# Project Timeline





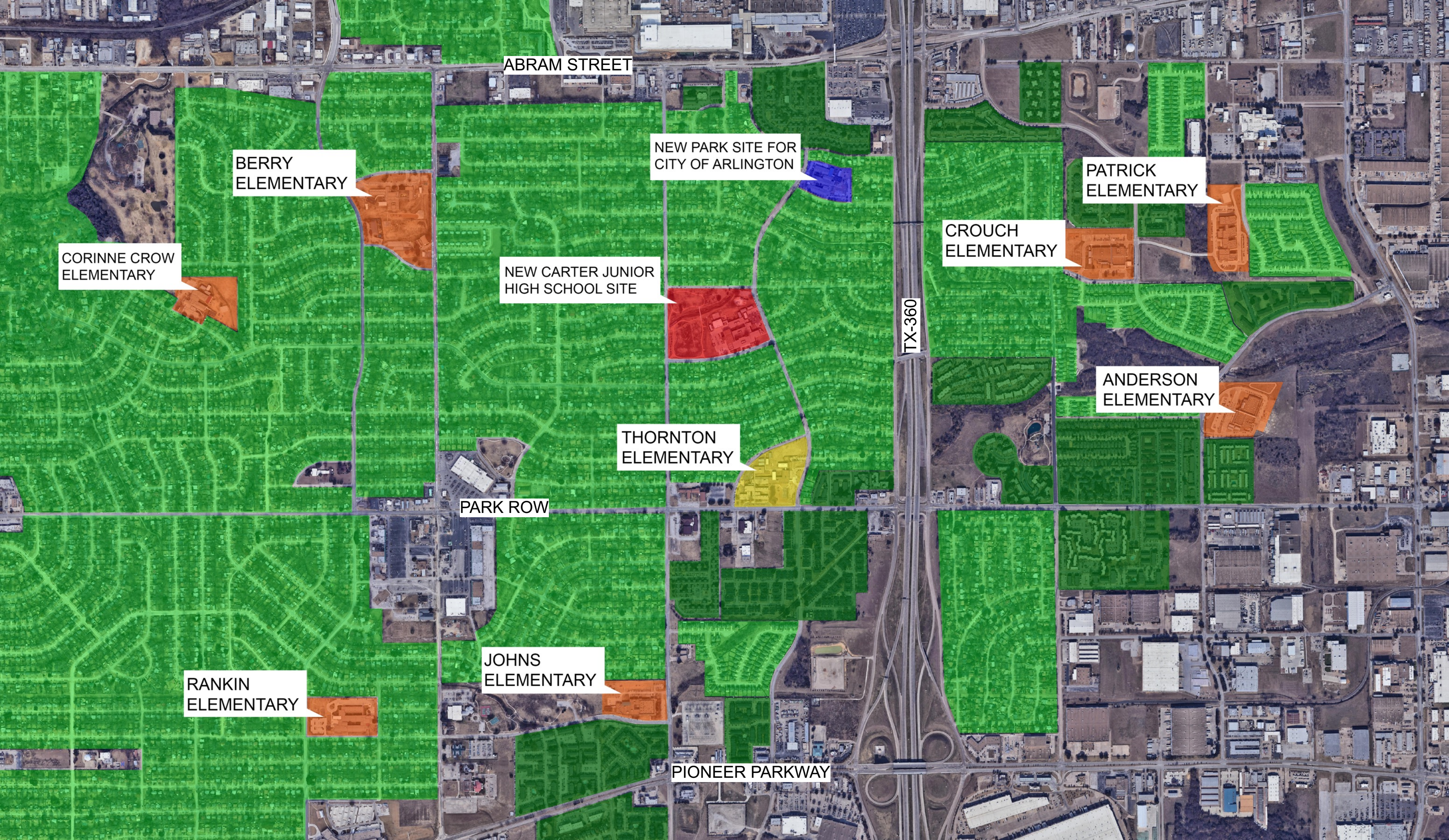


# Campus Overview

Existing Site

School Culture





CORINNE CROW  
ELEMENTARY

BERRY  
ELEMENTARY

NEW PARK SITE FOR  
CITY OF ARLINGTON

NEW CARTER JUNIOR  
HIGH SCHOOL SITE

THORNTON  
ELEMENTARY

PATRICK  
ELEMENTARY

CROUCH  
ELEMENTARY

ANDERSON  
ELEMENTARY

RANKIN  
ELEMENTARY

JOHNS  
ELEMENTARY

TX-360

ABRAM STREET

PARK ROW

PIONEER PARKWAY



**SPECIALTY PROGRAMS**



**CULTURE**



**OPPORTUNITIES FOR ENGAGEMENT**



**COMMUNITY AND  
CAMPUS  
CONNECTIONS**





# Design Charrettes

## Overview

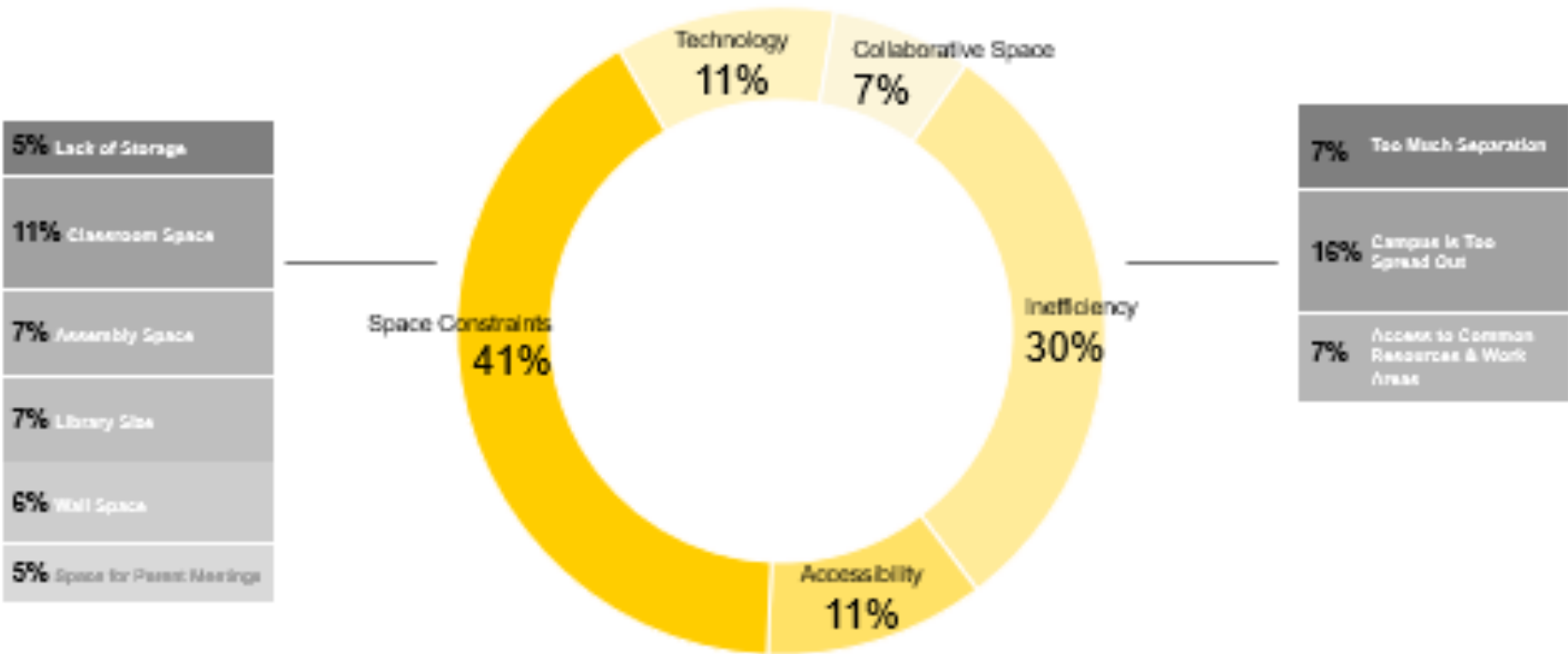


Thornton Elementary School — Faculty Survey Responses

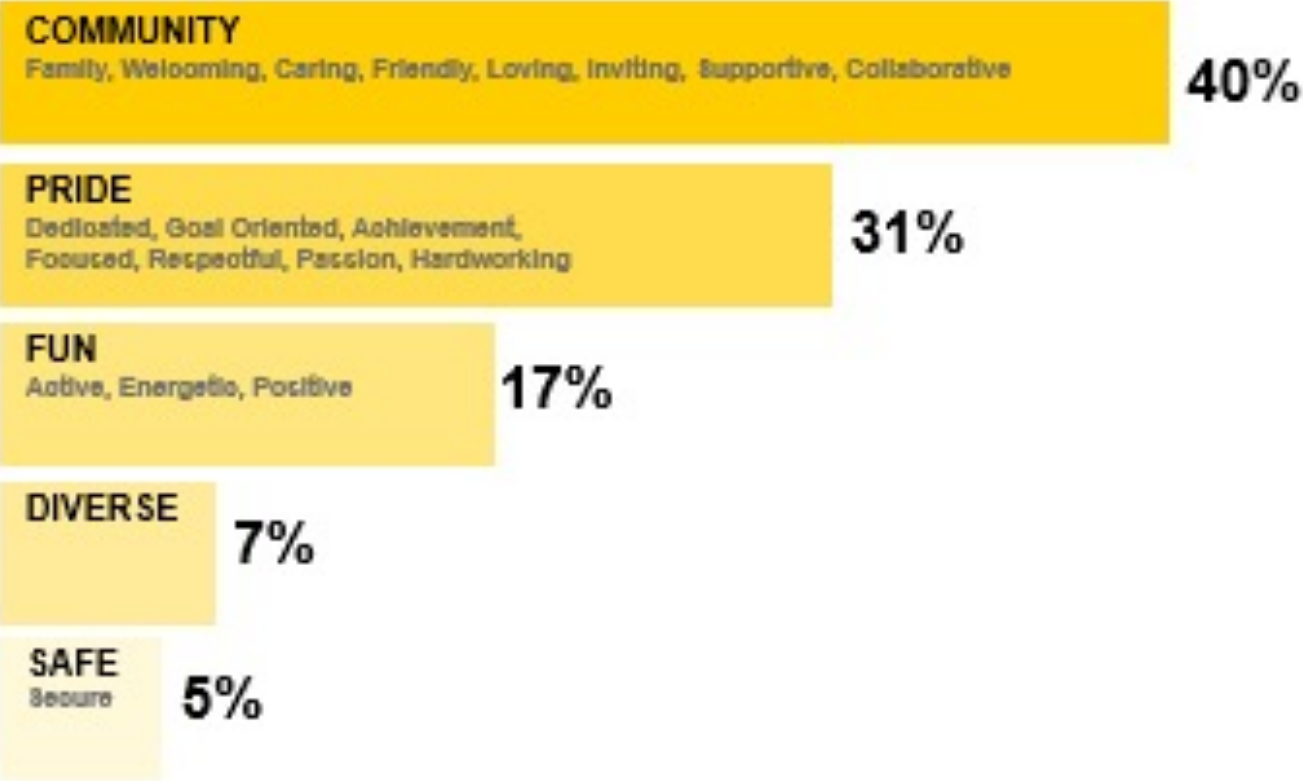
WHEN YOUR STUDENTS WALK INTO THE NEW ELEMENTARY SCHOOL, HOW DO YOU WANT THEM TO FEEL?



WHAT ARE SOME OF THE LIMITATIONS IN YOUR CURRENT SCHOOL'S PHYSICAL ENVIRONMENT FOR TEACHING AND LEARNING?



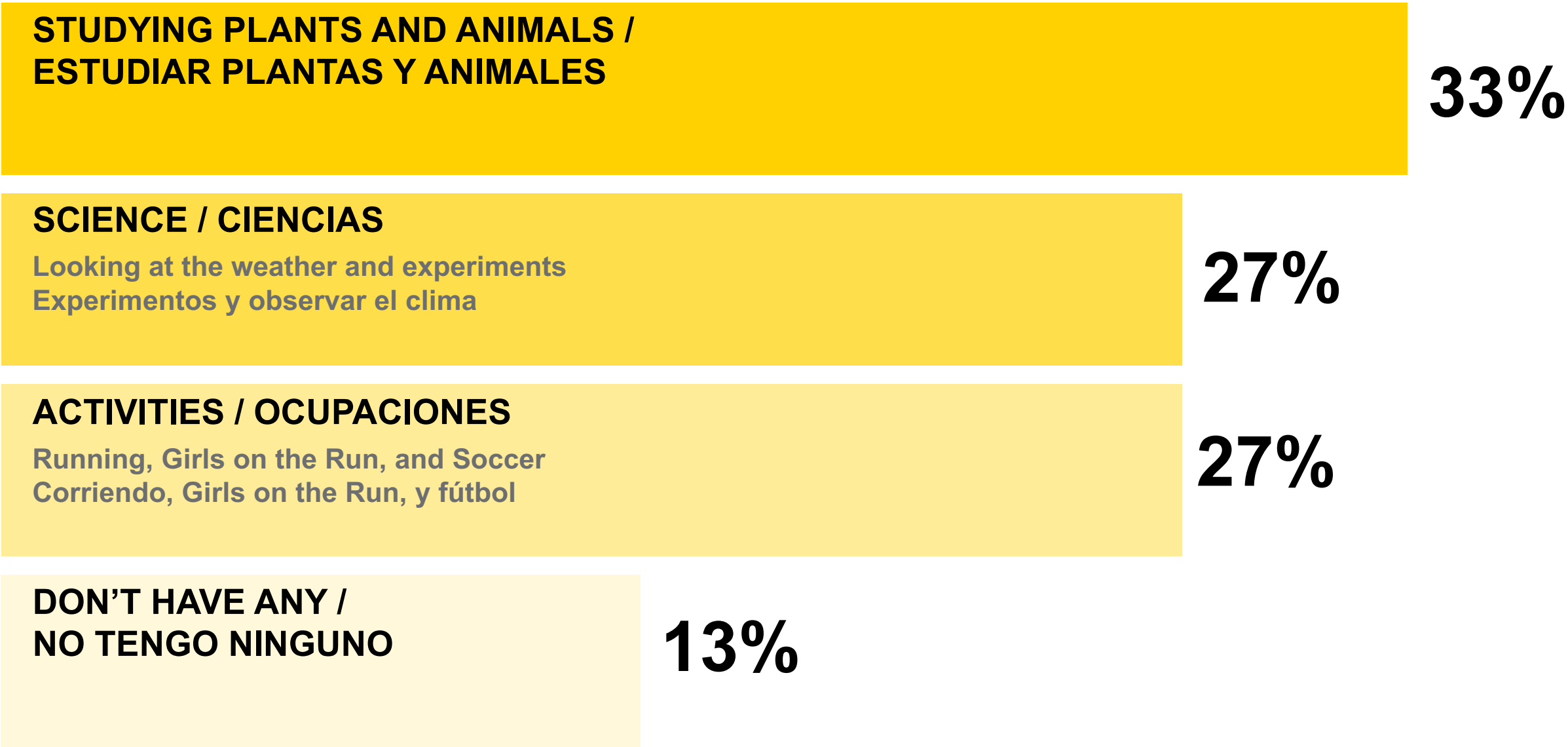
WHAT ARE THREE WORDS THAT DESCRIBE YOUR SCHOOL'S CURRENT CULTURE?





What are your favorite learning activities to do outside?

¿Cuáles son tus actividades de aprendizaje favoritas para hacer afuera?





On a scale of 1 star being lowest score and 5 the highest - please rank the following statement: I learn best when I can be in groups with my classmates.

En una escala donde 1 estrella es lo más bajo y 5 estrellas lo más alto, clasifica la siguiente frase: aprendo más cuando estoy con mis compañeros en grupo.



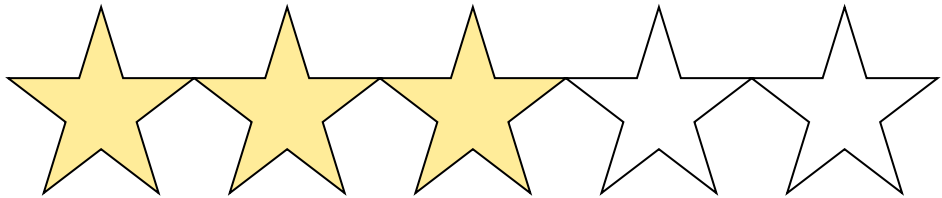
47%

ANSWERED 5



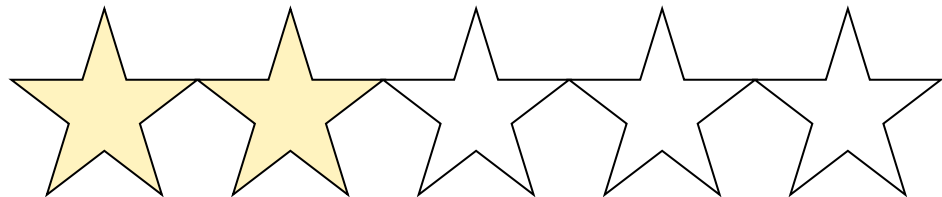
24%

ANSWERED 4



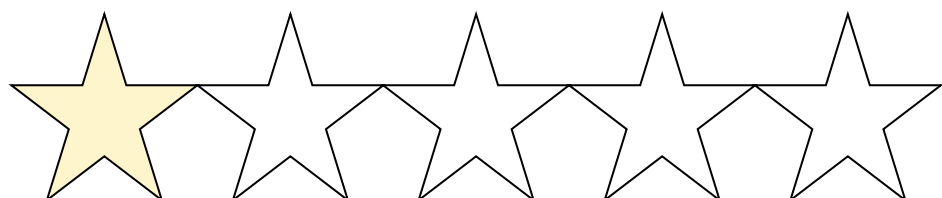
18%

ANSWERED 3



6%

ANSWERED 2



6%

ANSWERED 1



# The 5 Second Rule



**Colors that make you happy.**

**Colores que te hacen feliz.**



# This or That

## Collaboration Space / Espacio de colaboración



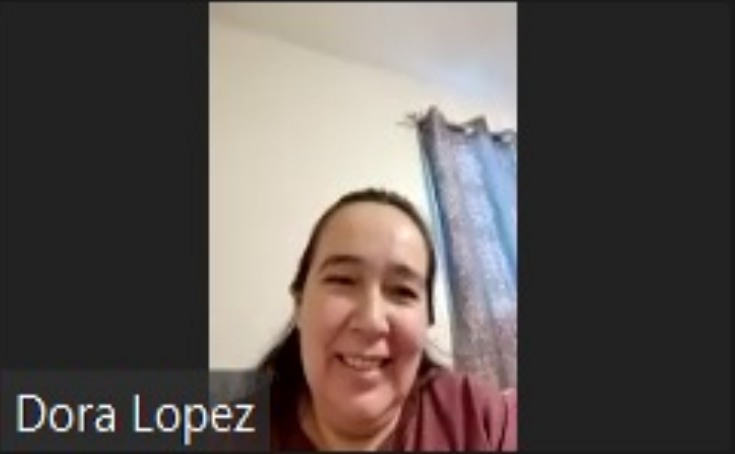
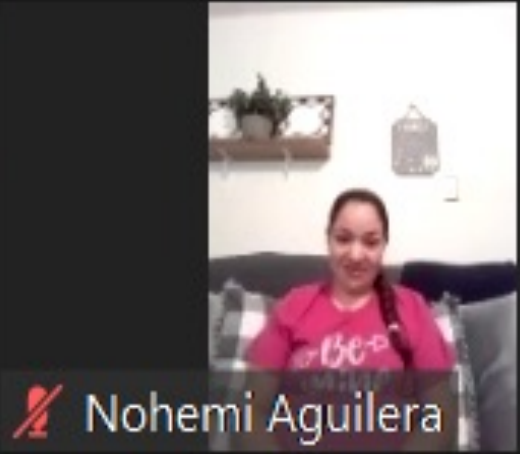
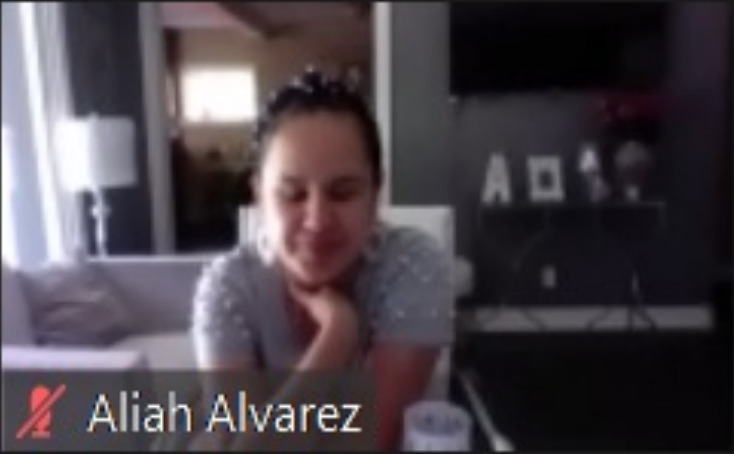
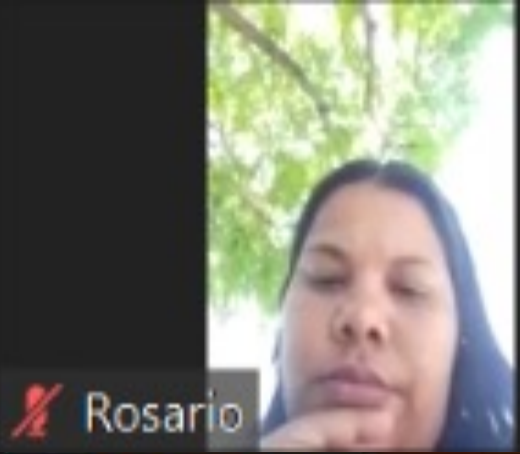
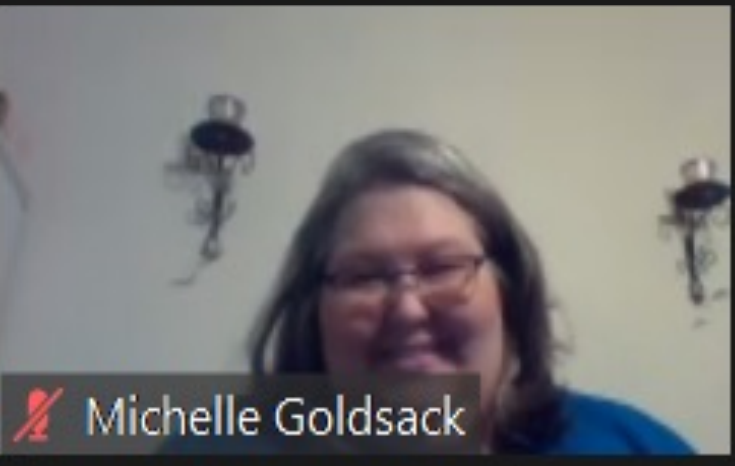
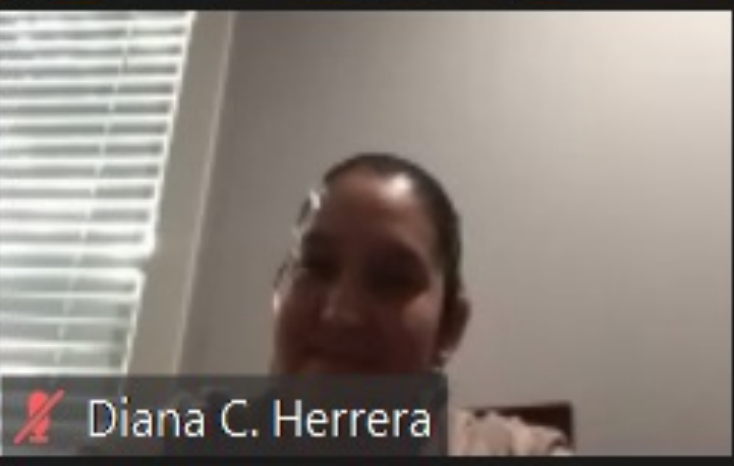
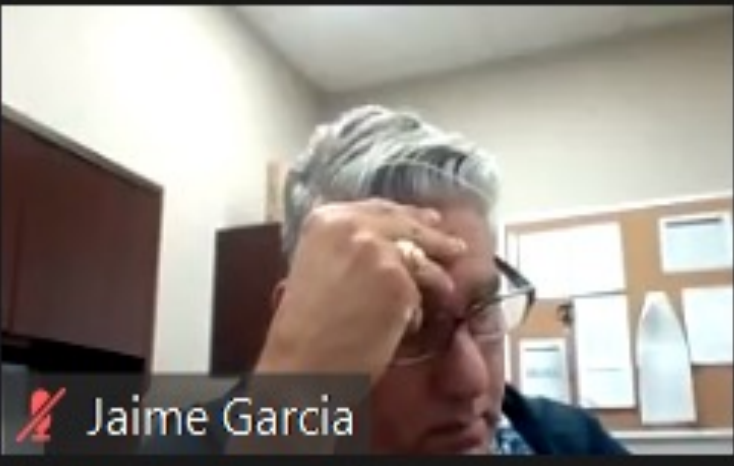
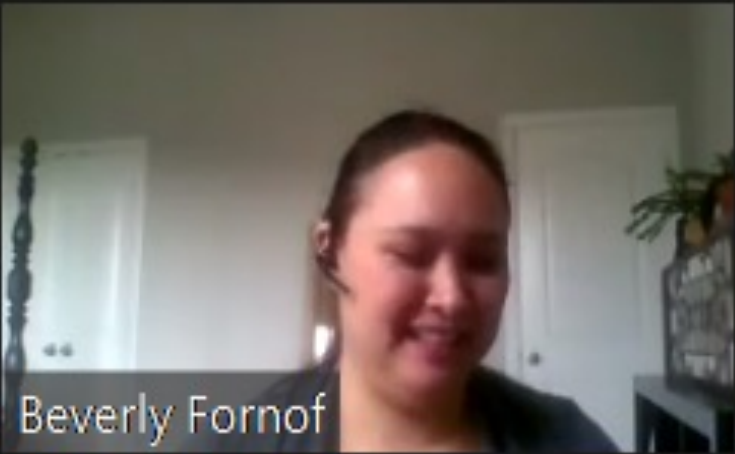
A



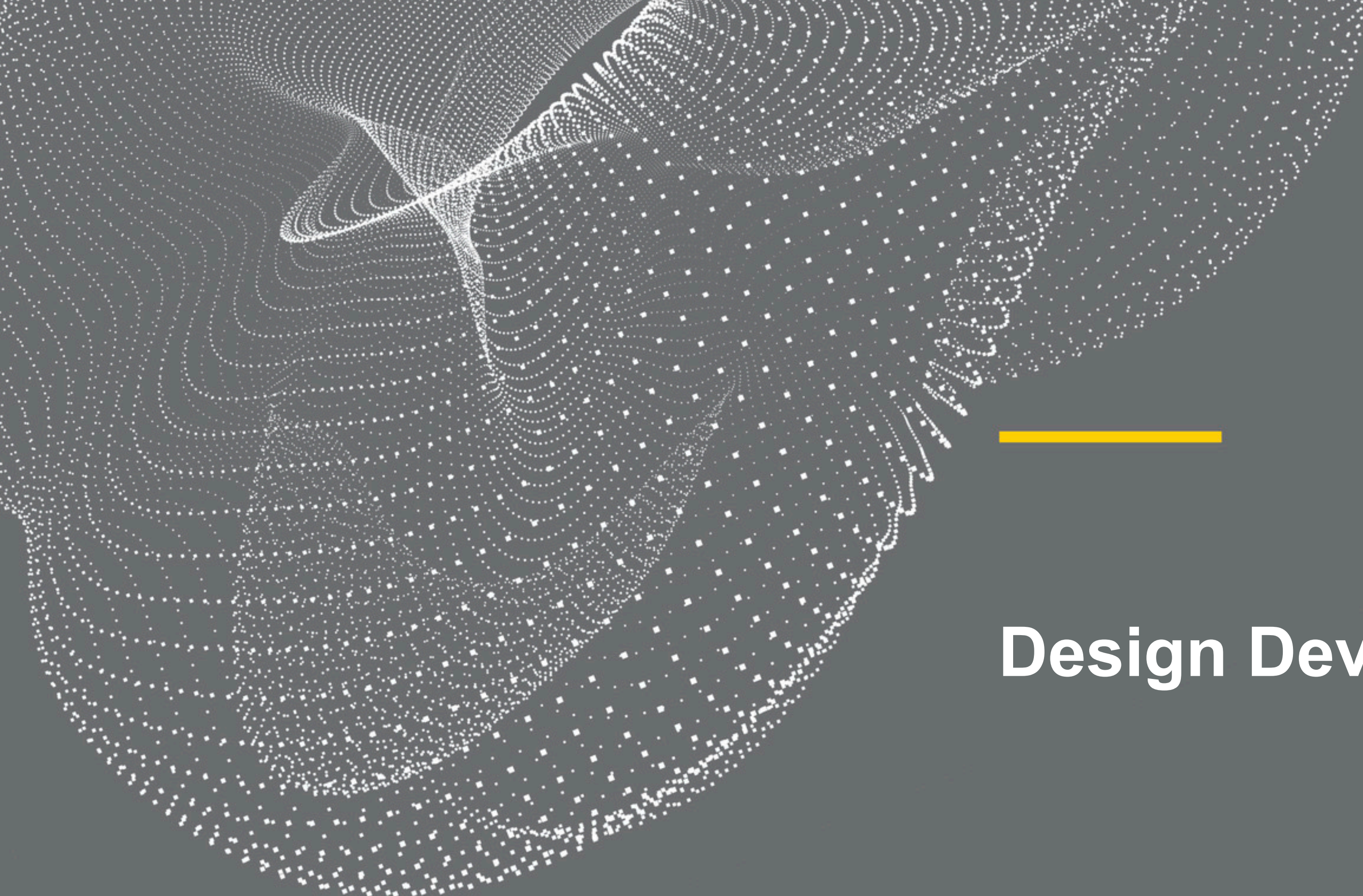
B



Thornton Elementary School — Virtual Charrette Meeting with the Parents







**Design Development**



# Key design goals for the new Thornton Elementary School

1

**LEARNING RICH ENVIRONMENT**

- Active flexible learning spaces
- Useful collaboration areas
- Learning on display
- Connection to the outdoors
- Restorative environment

2

**STRONG IDENTITY**

- Support vision of AISD
- Represent community
- Campus pride
- “Gateway to East Arlington”

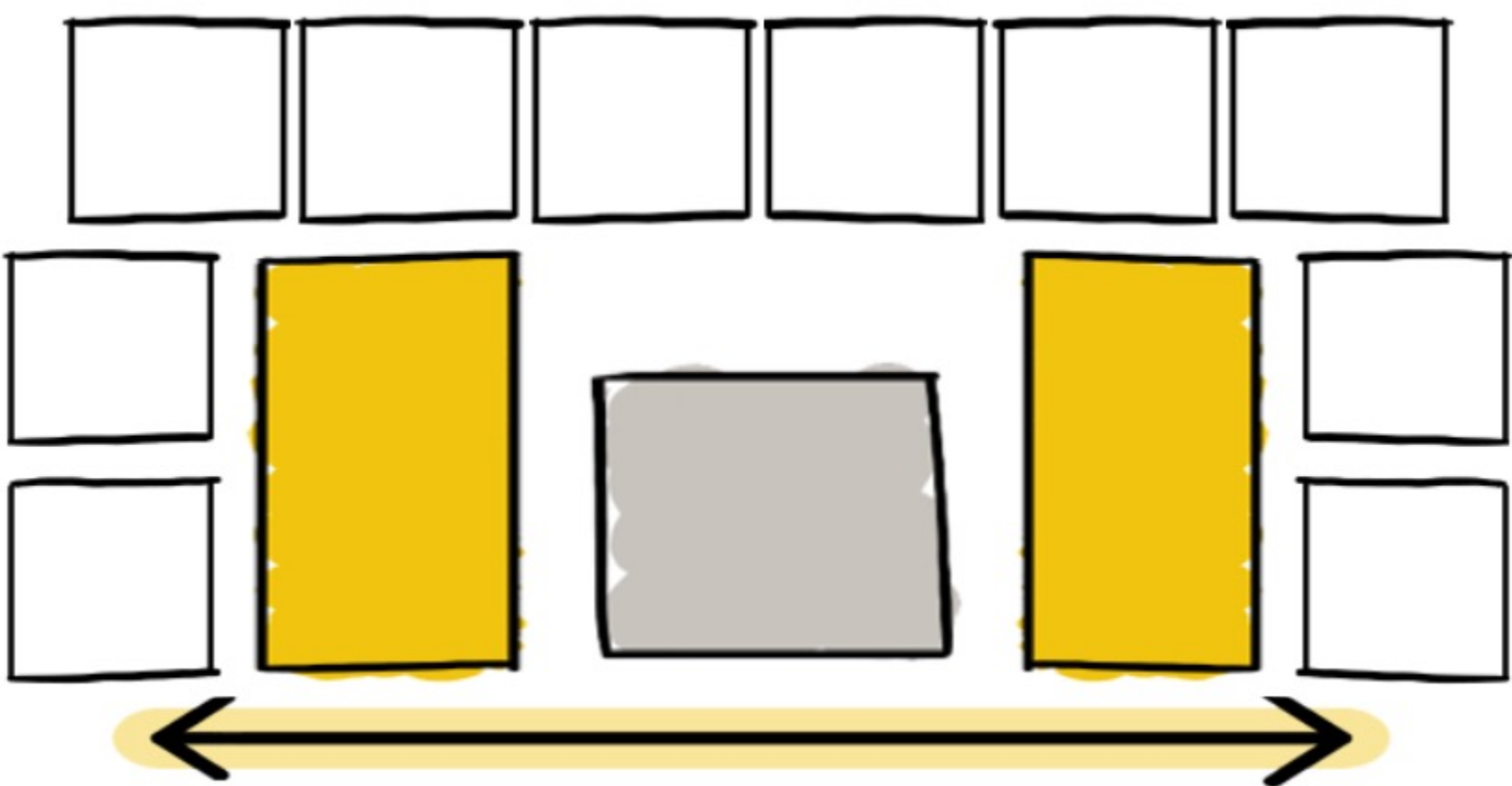
3

**COMMUNITY SUPPORT**

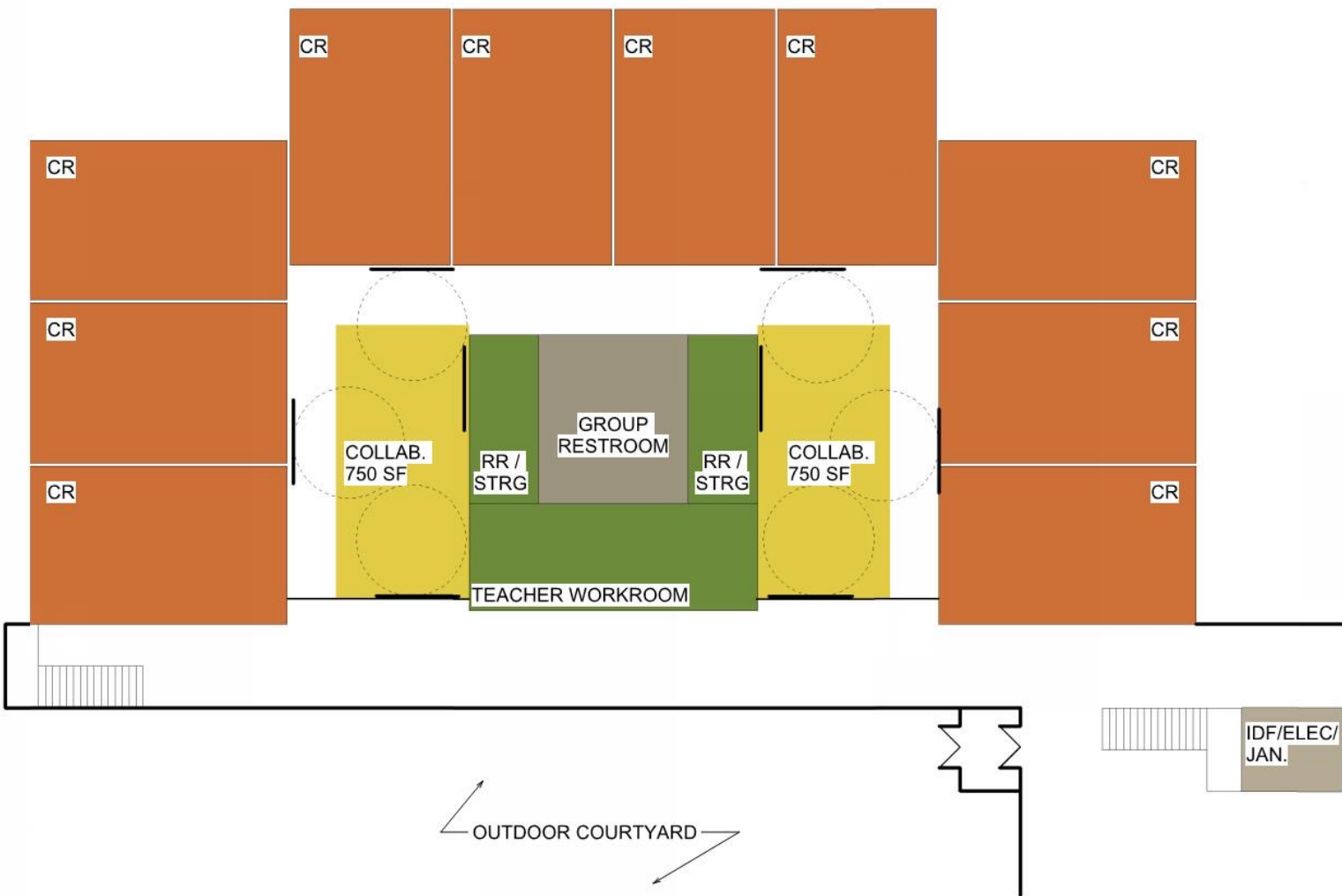
- Parent education:
  - ESL and Technology*
- Ample assembly spaces
- Extra-curricular activities for students



# Collaboration Prototypes



**Collaboration Pod Centrally Located**  
Teacher Workroom as Buffer







Existing Site





# Site Analysis

- Mature Trees
- Main Entry Access
- Community Use Areas





# Site Analysis

- Mature Trees
- Main Entry Access
- Community Use Areas





# Site Analysis & Building

Public Spaces

Entry Plaza





# Site Analysis & Building

Public Spaces

Entry Plaza

Pedestrian Zone and Paths





# Site Analysis & Building

Media Center is at the center of the campus





# Site Analysis & Building

Outdoor Learning Courtyard is easily accessible and highly visible for engagement





# Site Analysis & Building

Core Classrooms located to the north with direct access to Outdoor Learning Courtyard





# Site Analysis & Building

Drives: Parent, Bus  
& Service

Parking: Visitor & Staff





---

# Current Design

PLANS

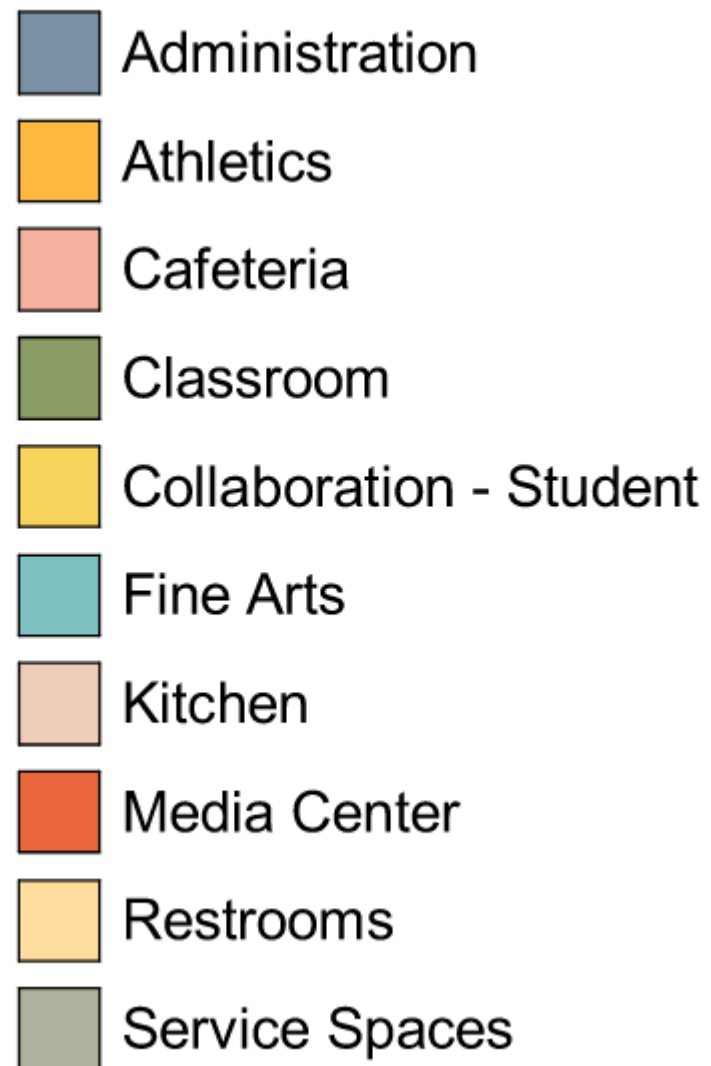


Thornton Elementary School – Site Plan





## Thornton Elementary School – 1<sup>st</sup> Floor





Thornton Elementary School – 2<sup>nd</sup> Floor

- Administration
- Classroom
- Collaboration - Student
- Lab
- Restrooms
- Service Spaces





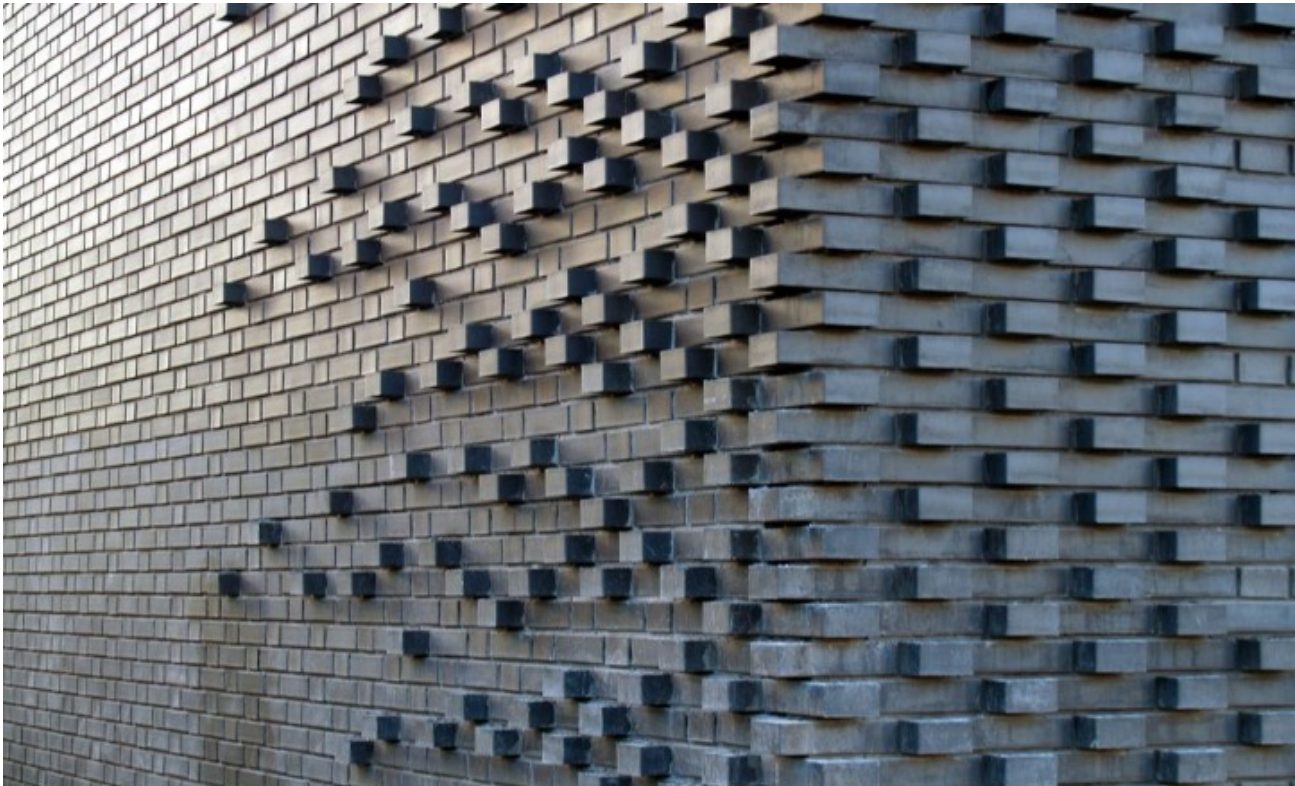


---

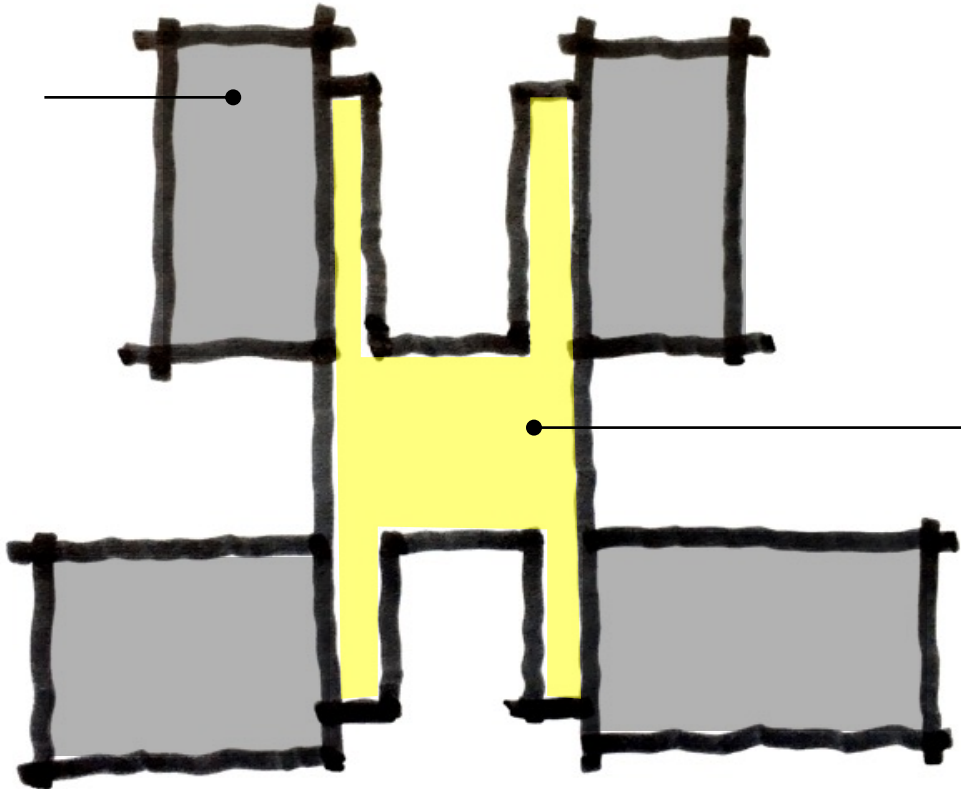
# Exterior Development



Thornton Elementary School – Precedents



Heavier brick masses  
at corners



Glass and accent  
masonry extend from  
the central library to  
wrap community and  
student courtyards



## Thornton Elementary School – Precedents





Thornton Elementary School





Thornton Elementary School





Thornton Elementary School





Thornton Elementary School





