



**Arlington**

INDEPENDENT SCHOOL DISTRICT

*More Than a Remarkable Education*

# **2019 BOND UPDATE REPORT AND BOND PLANNING DISCUSSION**

*June 17, 2025*

# Bond Program Financial Summary

## (Phases I-V)

	Budget	Encumbered	Expended	Available	Remaining
Facilities	\$852,726,335	\$108,713,740	\$508,894,184	\$235,118,411	\$0
Fine Arts	\$6,955,752	\$116,067	\$5,187,746	\$1,651,939	\$0
Technology	\$90,829,000	\$3,224,960	\$72,099,605	\$15,504,435	\$0
Transportation	\$15,488,913	\$1,573,481	\$7,720,566	\$6,194,866	\$0
<b>Totals</b>	<b>\$966,000,000</b>	<b>\$113,628,248</b>	<b>\$593,902,101</b>	<b>\$258,469,650</b>	<b>\$0</b>
			Bond Issuance Costs	-\$5,242,704	
			Projected Interest Arbitrage Liability	-\$20,977,755	
			Interest and Additional Proceeds	\$52,625,842	
			<b>Total Available Funds</b>	<b>\$284,875,033</b>	

**Note: Totals may not add due to rounding. Information as of May 1, 2025.**



# Active Projects – by Phase

*(Bond Phases I – V)*

Phase	Number of Projects
Planning	12
Design	24
Bid	3
Construction	25
Closeout	3
Completed	32
<b>Total Projects</b>	<b>99</b>





# Facilities – *Joey Rodriguez Junior High School*





# Facilities – *Glaspie Field Construction*







# HUB Participation

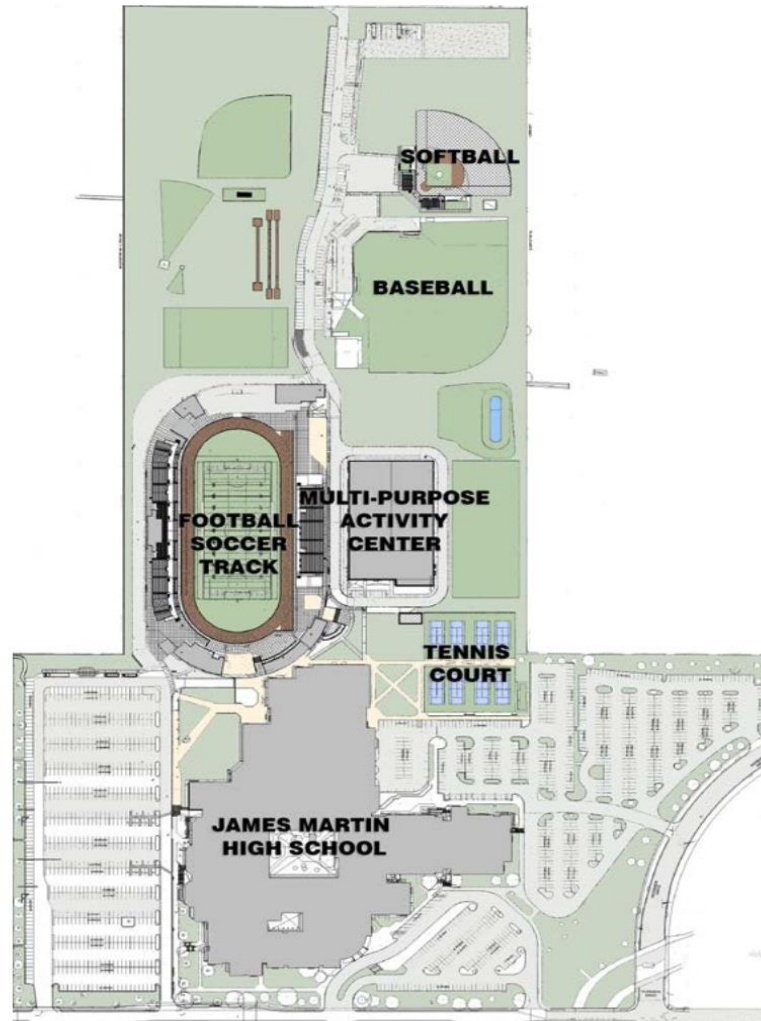
## PHASES I-V

Project Description	Budget	Tier II HUB Participation Commitment %	Tier II HUB Participation Amount	Expenses To Date	Tier II % HUB Participation Achieved To Date	Tier II HUB Participation Amount To Date
2019 BOND PROGRAM PHASES I-V HUB TOTALS	\$ 556,189,154	23.45%	\$ 130,398,981	\$ 437,480,558	24.66%	\$ 107,895,800

***Note: Totals above are excerpted from the 06/01/2025 HUB report***

# Facilities – *Schematic Site Drawing - Glaspie Field*

## GLASPIE FIELD - CURRENT DESIGN



# Facilities – *Cravens Field*

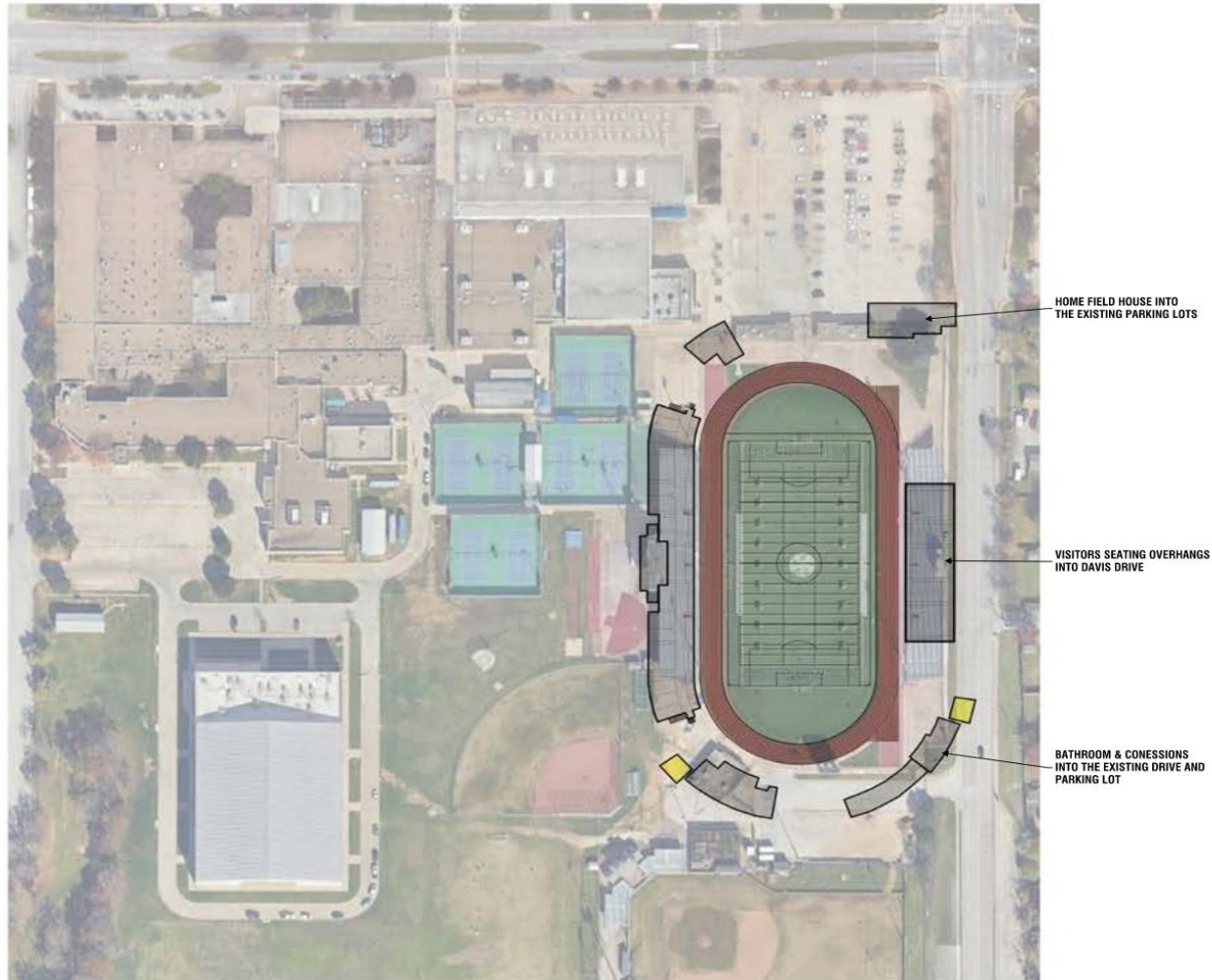
## CRAVENS FIELD - EXISTING CONDITION





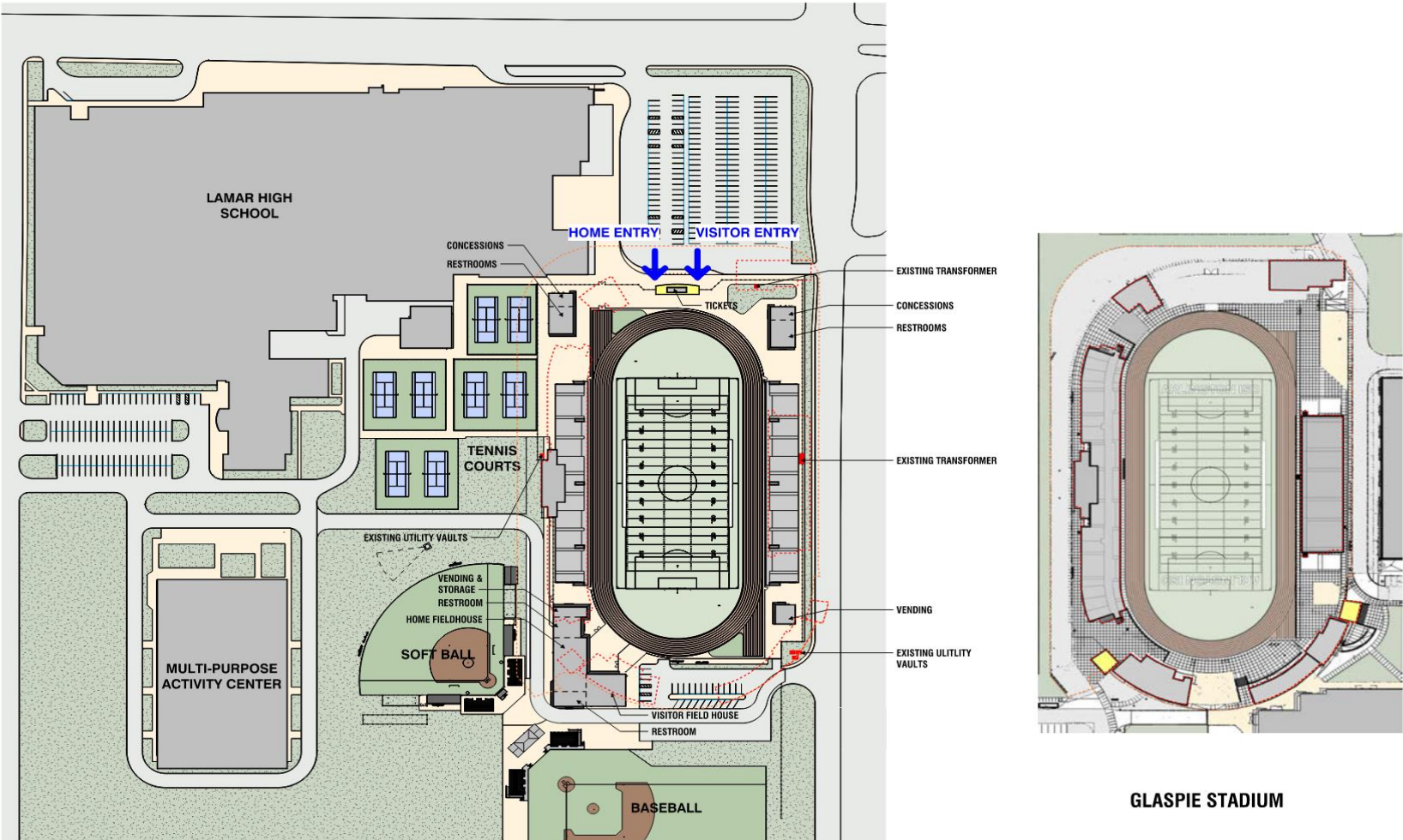
# Facilities – *Cravens Field*

## CRAVENS FIELD - EXISTING WITH GLASPIE OVERLAY



# Facilities – Schematic Site Drawing - Cravens Field

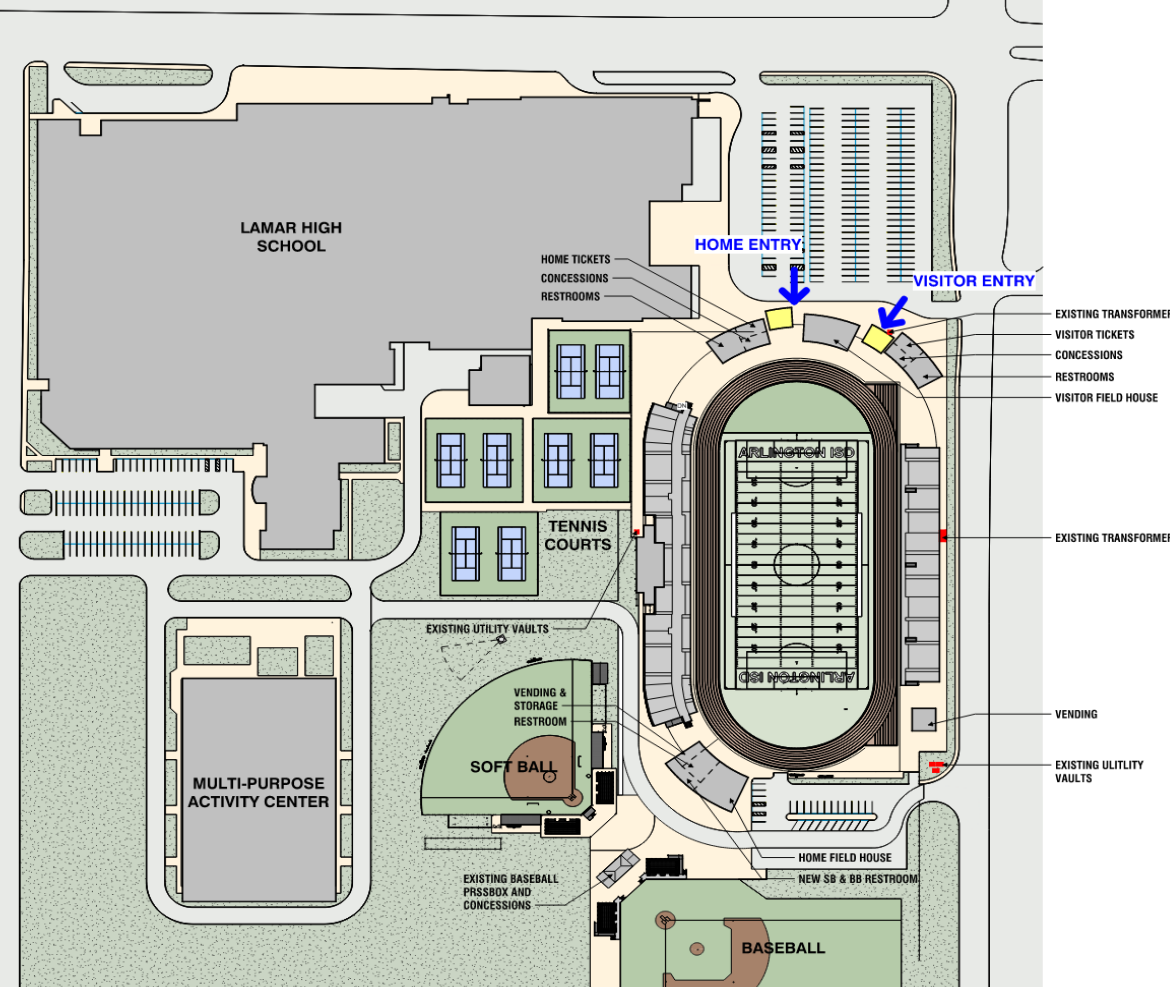
## CRAVENS FIELD - CURRENT DESIGN





# Facilities – Revised Schematic Site Drawing - Cravens Field

## CRAVENS FIELD - REVISED PLAN



# Facilities – *Wilemon Field*

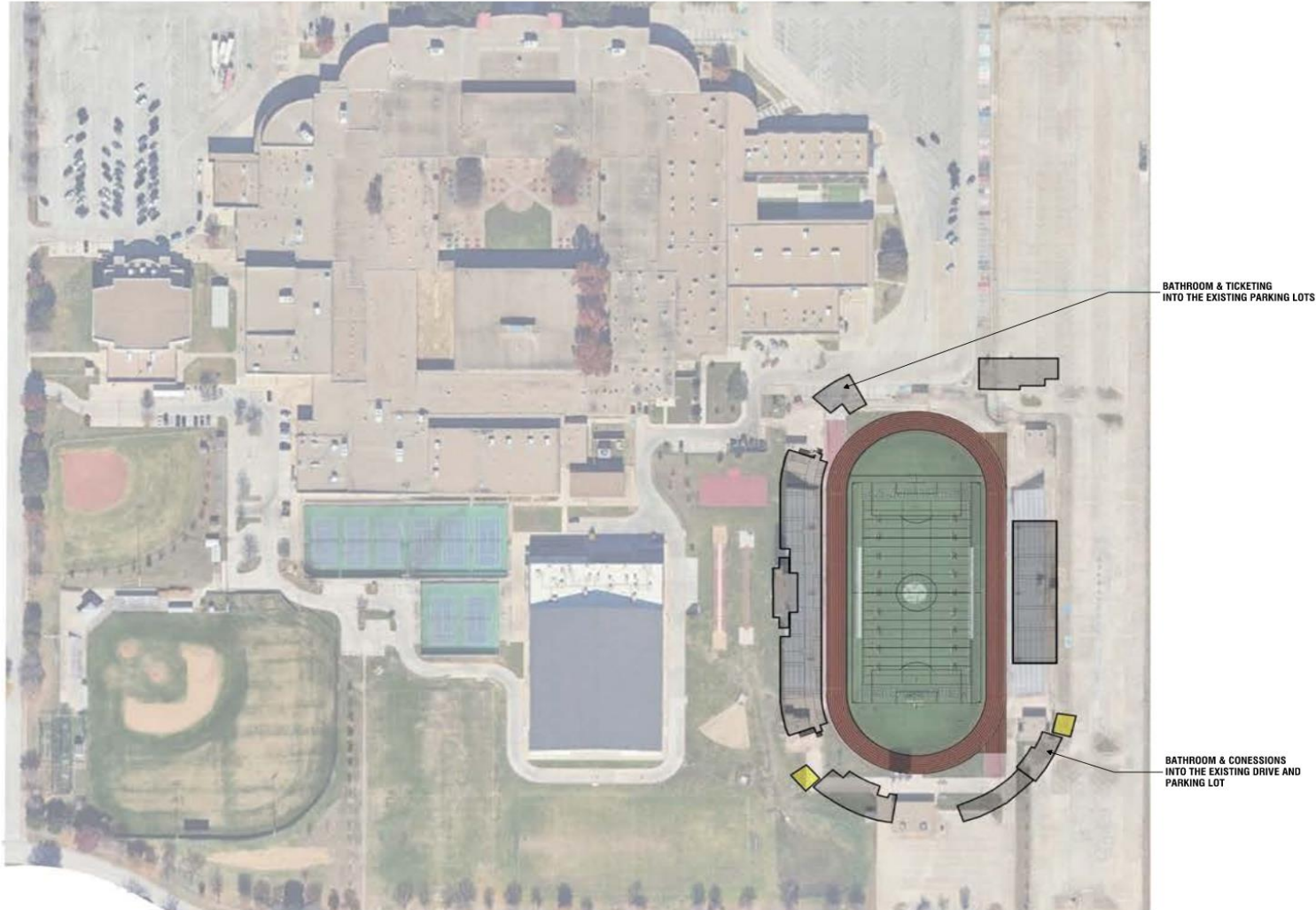
## WILEMON FIELD - EXISTING CONDITION





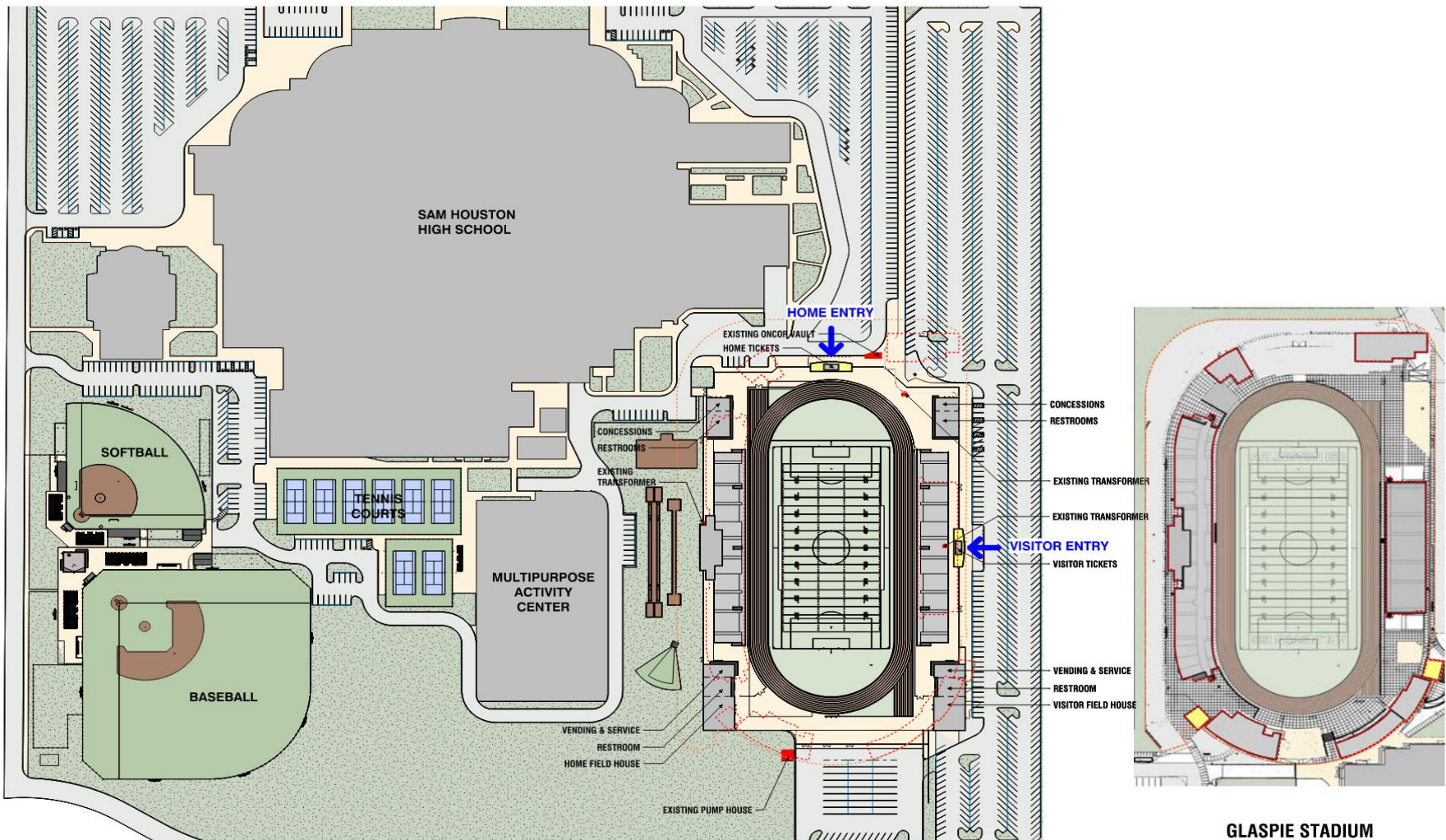
# Facilities – *Wilemon Field*

## WILEMON FIELD - EXISTING WITH GLASPIE OVERLAY



# Facilities – Schematic Site Drawing – Wilemon Field

## WILEMON FIELD - CURRENT DESIGN





The site plan illustrates the layout of Sam Houston High School and its surrounding facilities. The main building, labeled "SAM HOUSTON HIGH SCHOOL", is a large, irregularly shaped structure. To the left of the school are the "SOFTBALL" and "BASEBALL" fields, both marked with green and brown. Below these fields are the "TENNIS COURTS". To the right of the school is the "MULTIPURPOSE ACTIVITY CENTER". The stadium, labeled "ARLINGTON ISD", is located to the right of the activity center. The stadium seating is divided into "HOME" and "VISITOR" sections. The plan includes various service areas: "EXISTING ONCOR VAULT", "SERVICE CONCESSIONS RESTROOMS", "HOME ENTRY", "VISITOR ENTRY", "EXISTING TRANSFORMER", "EXISTING TRANSFORMER", "TICKET & CONCESSION RESTROOM VISITOR FIELD HOUSE", "VENDING & SERVICE RESTROOM", "HOME FIELD HOUSE", and "EXISTING PUMP HOUSE". The plan also shows parking areas, a "MOVE TURN NORTH" area, and a "HOME TICKET & CONCESSIONS RESTROOM".

# Facilities – Schematic Rendering – Wilemon Field Entry





# Facilities – Schematic Rendering – Wilemon Field Aerial View





# Facilities – *Schematic Rendiering - Cravens Field Entry*





# Facilities – Schematic Rendering - Cravens Field Aerial View





# Facilities

## Glaspie, Cravens & Wilemon Field Comparison

Area	Glaspie	Cravens	Wilemon
Press box (SF)	8,144	8,144	8,144
Home Locker Room (SF)	2,760	2,760	2,760
Visitor Locker Room (SF)	2631*	2,760	2,760
Vending / Concessions	1,900	1,900	1,900
Storage:	800	800	800
Total Area:	24,121	24,250	24,250
<b>Fixture Count</b>			
Male Toilets/Urinals	46	46	46
Male Sinks	17	17	17
Femail Toilets	58	58	58
Femail Sinks	22	22	22
Unisex Toilets	4	4	4
Unisex Sinks	4	4	4
Drinking Fountains	14	14	14

\* The Glaspie Field locker rooms are rectangular in shape creating a minor difference. This is negated by the design efficiency.



A photograph of a modern, multi-story building with a large glass facade and a brick base. The building is viewed from a low angle, emphasizing its height. The sky is clear and blue. In the foreground, there is a grassy area with some small plants and a paved walkway. The text "NEXT STEPS AND DISCUSSION" is overlaid in the center of the image.

# **NEXT STEPS AND DISCUSSION**