



SCHEMATIC DESIGN

Arlington ISD Board Meeting

June 11, 2020

Arlington ISD | John Webb Elementary



Lisa

PROJECT PRINCIPAL



Anne

PROJECT DIRECTOR



Steve

PROJECT MANAGER



Chris

PROJECT DESIGNER



Denisse

PROJECT ARCHITECT



Justin

PROJECT COORDINATOR



Edith

ARCHITECT IN TRAINING



Cristina

ARCHITECT IN TRAINING

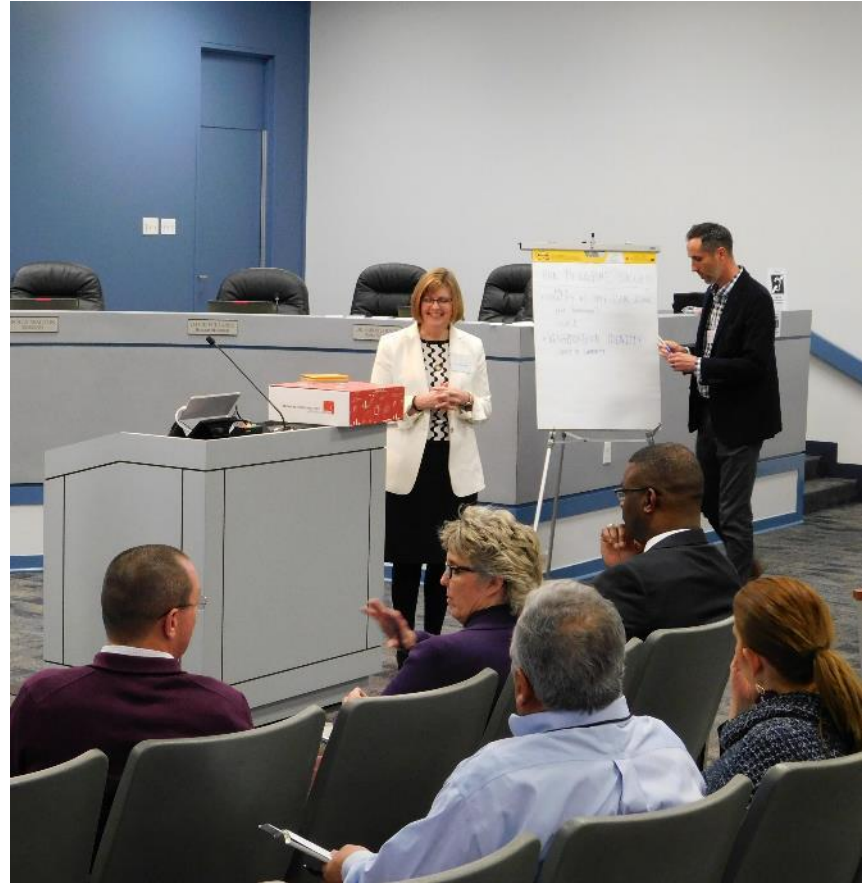
Project | Summary

- WEBB ELEMENTARY SCHOOL REPLACEMENT
- PRE-K THROUGH 6TH GRADE
- 900 STUDENT CAPACITY
- 102,375 GSF

Project | Schedule

- **STAKEHOLDER VISIONING.....FEB-MARCH 2020**
- **DESIGN COMPLETE.....DECEMBER 2020**
- **BEGIN CONSTRUCTION.....SPRING 2021**
- **NEW SCHOOL OPENS.....FALL 2022**
- **DEMOLITION AND SITE COMPLETION....SUMMER 2023**

VALUES+SITE	<p>HOW TO DEFINE SUCCESS</p> <p>QUALITY OF THIS SCHOOL</p> <p>NEIGHBORHOOD IDENTITY</p> <p>INCLUSIVITY</p>	<p>PRE-K</p> <p>PRE-K</p>
CULTURE	<p>CULTURE</p> <p>CULTURE</p>	<p>CULTURE</p> <p>TRADITIONS+VALUES</p>
REFERENCES	<p>REFERENCES</p>	<p>REFERENCES</p>



WHAT **CULTURE, TRADITIONS AND VALUES** DO YOU LOVE ABOUT WEBB ELEMENTARY?

- **PREDOMINANT BILINGUAL CULTURE**
- **HEART OF THE COMMUNITY**
- **COMMUNITY OUTREACH**

HOW DO WE DEFINE **SUCCESS** UPON PROJECT COMPLETION?

- **NEW COMMUNITY GATEWAY**
- **SAFE AND INCLUSIVE**
- **A PLACE FOR KIDS !**

VISIONING

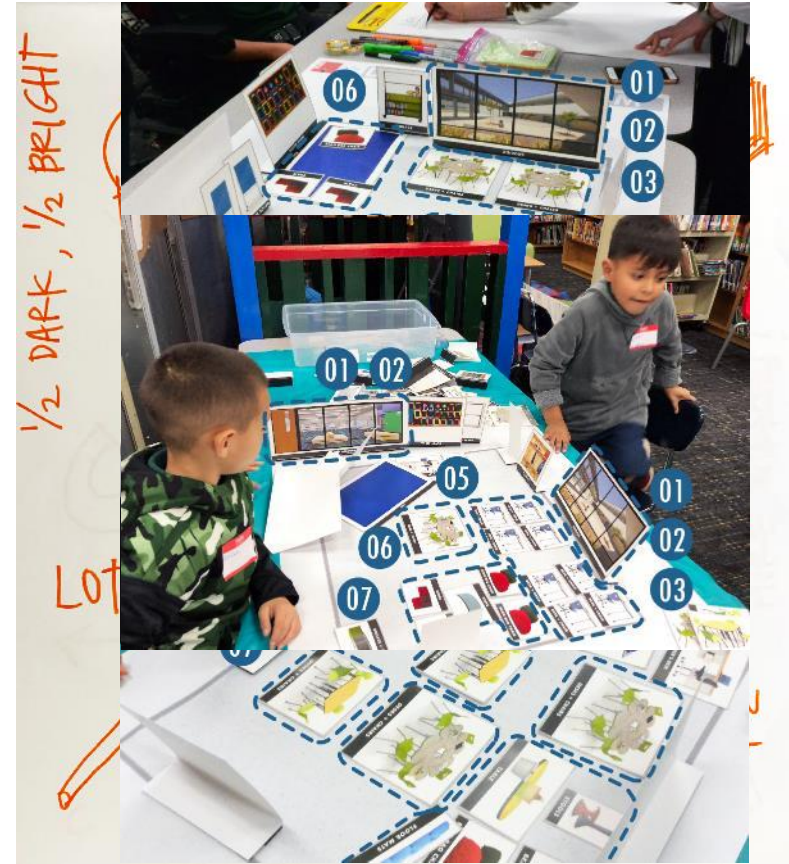
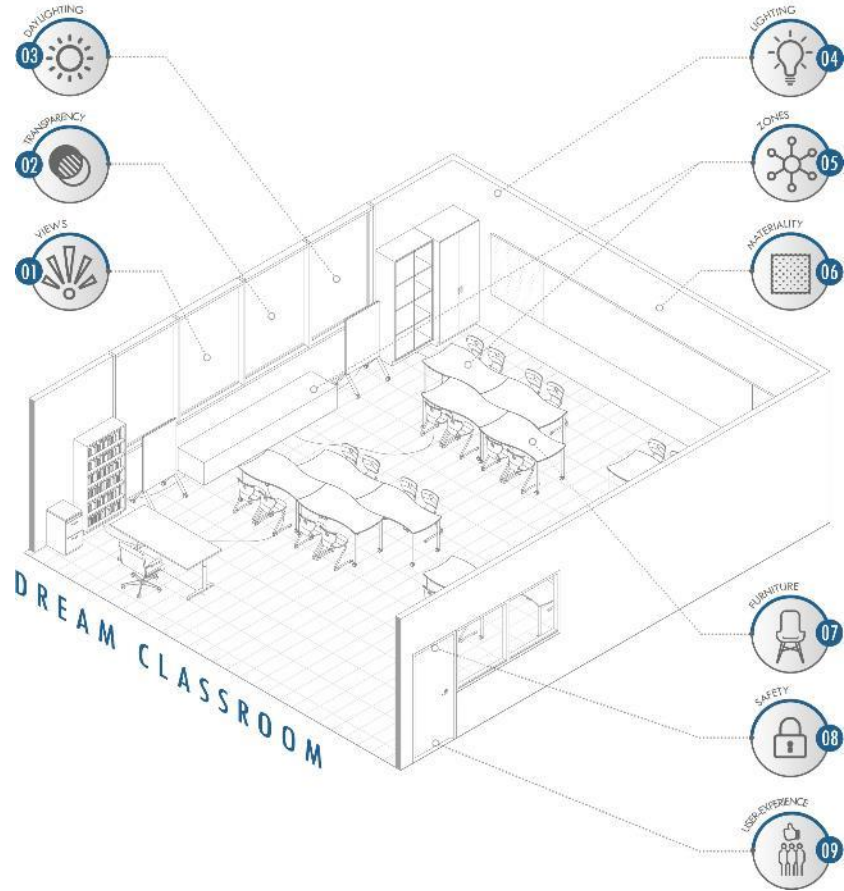


STAKEHOLDER MEETING NO. 2



STAKEHOLDER MEETING NO. 3

DREAM CLASSROOM EXERCISE | STUDENTS



MEDIA CENTER



MOST LIKED



MOST DISLIKED



Different options for furniture, flexible, lounge, organic shapes



built-in nooks, small learning stair with playful shape, individual reading time, collaboration



variety of scale while having plenty of space



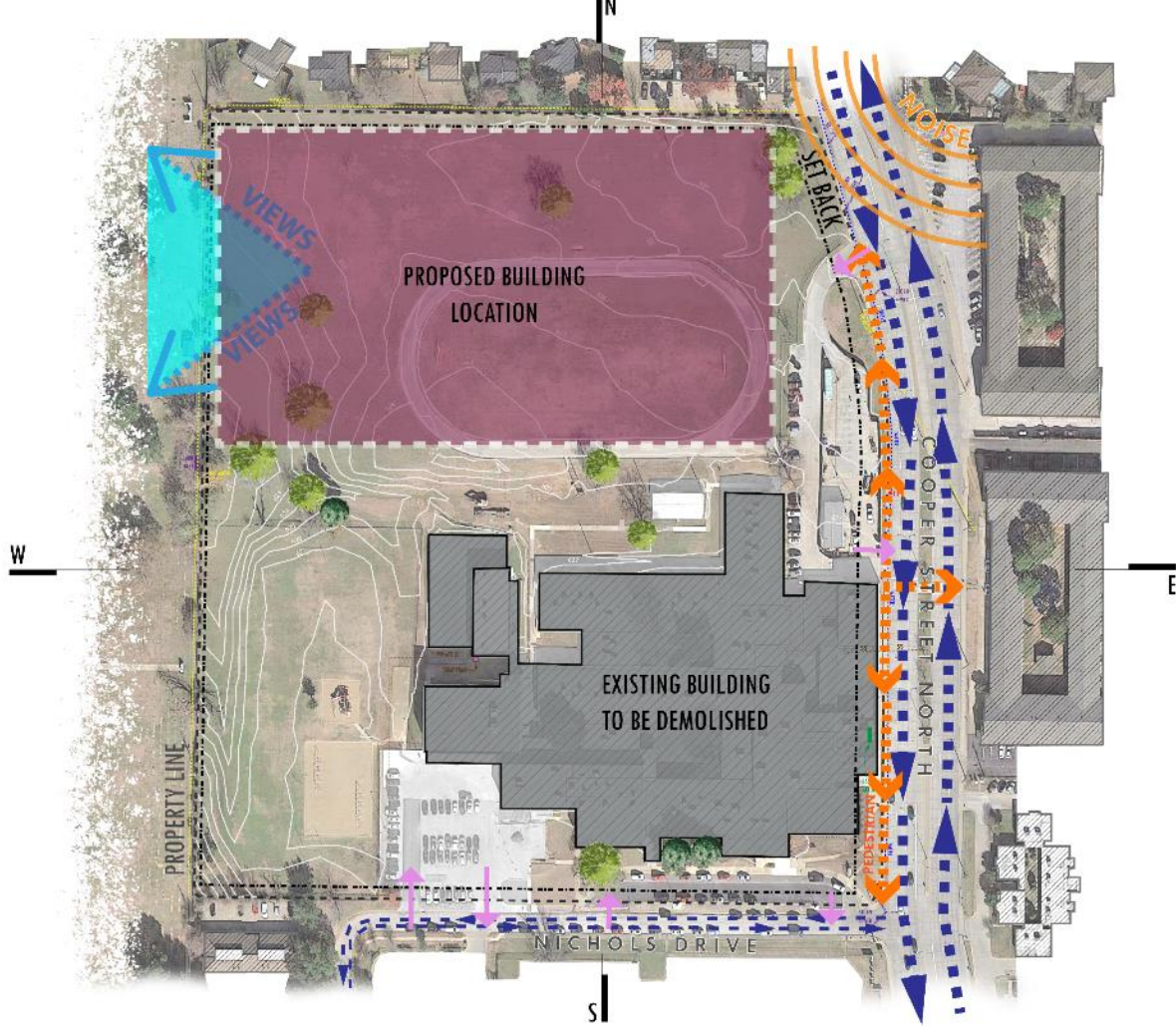
light fixture variety and controllability



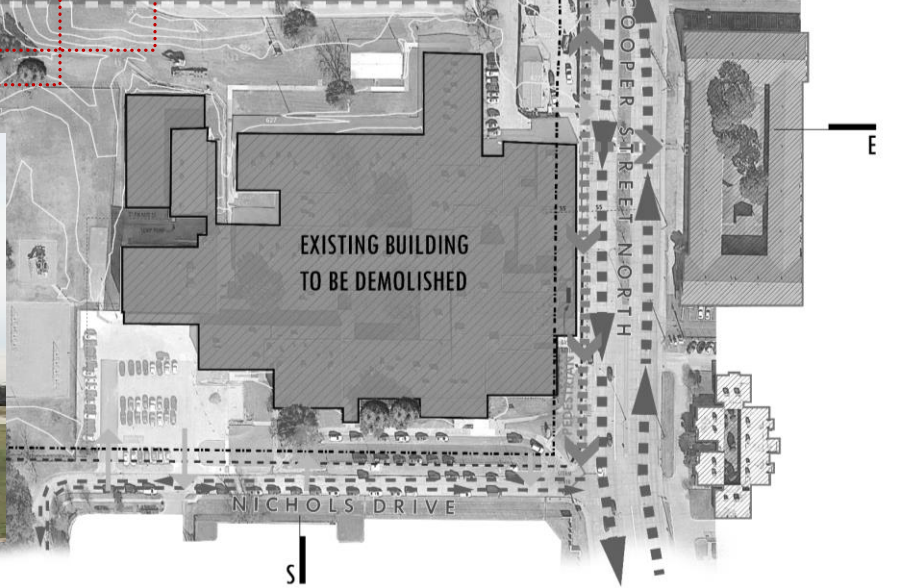
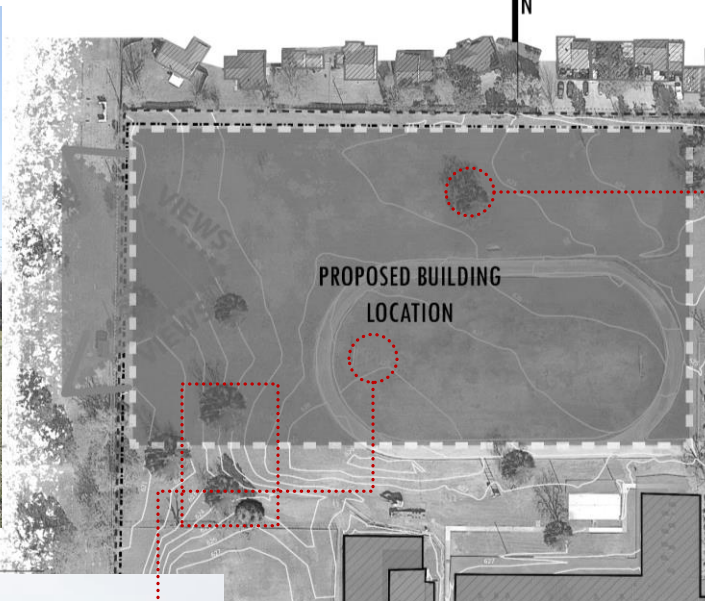
comfort, soft and inviting, not rigid

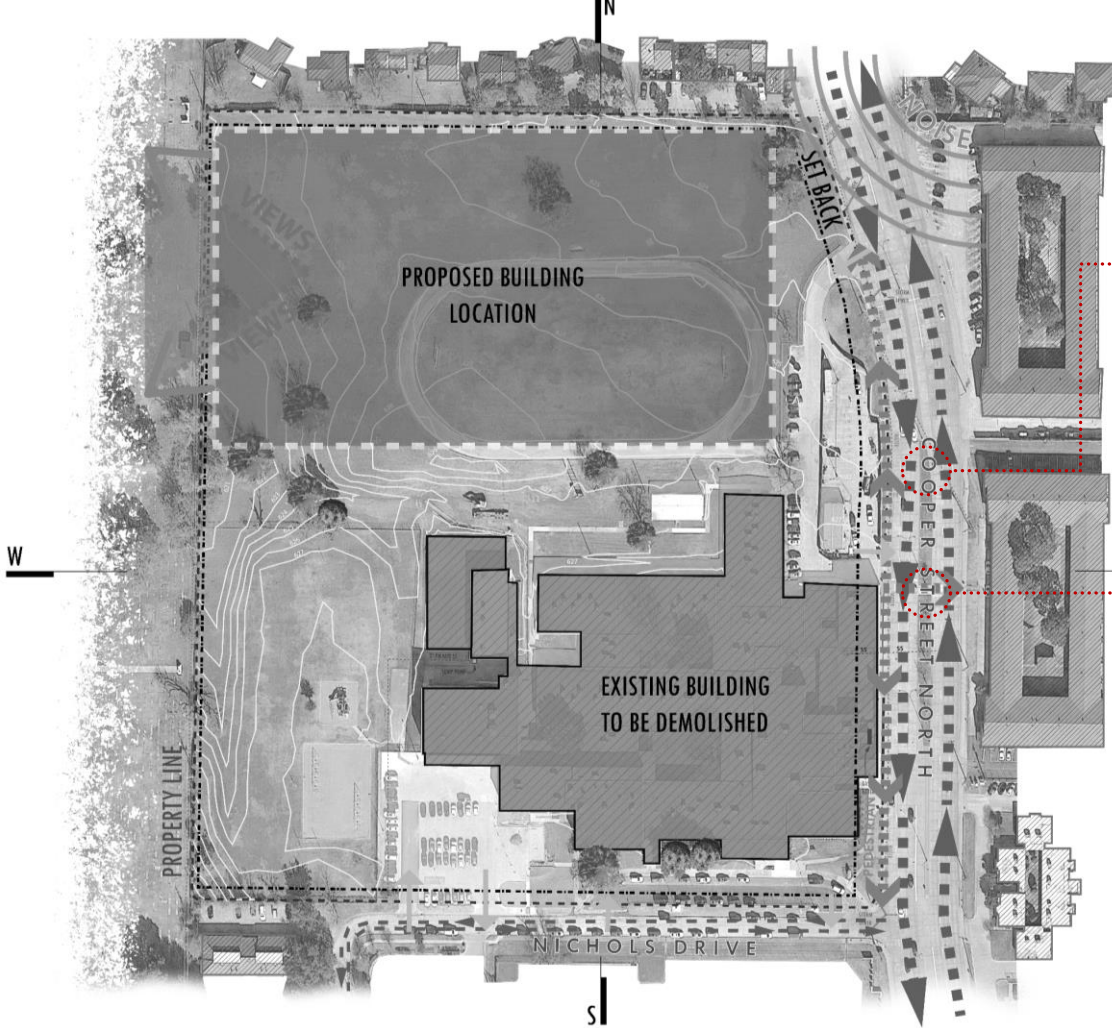


plenty of natural daylight and views



MASTER PLANNING | SITE ANALYSIS





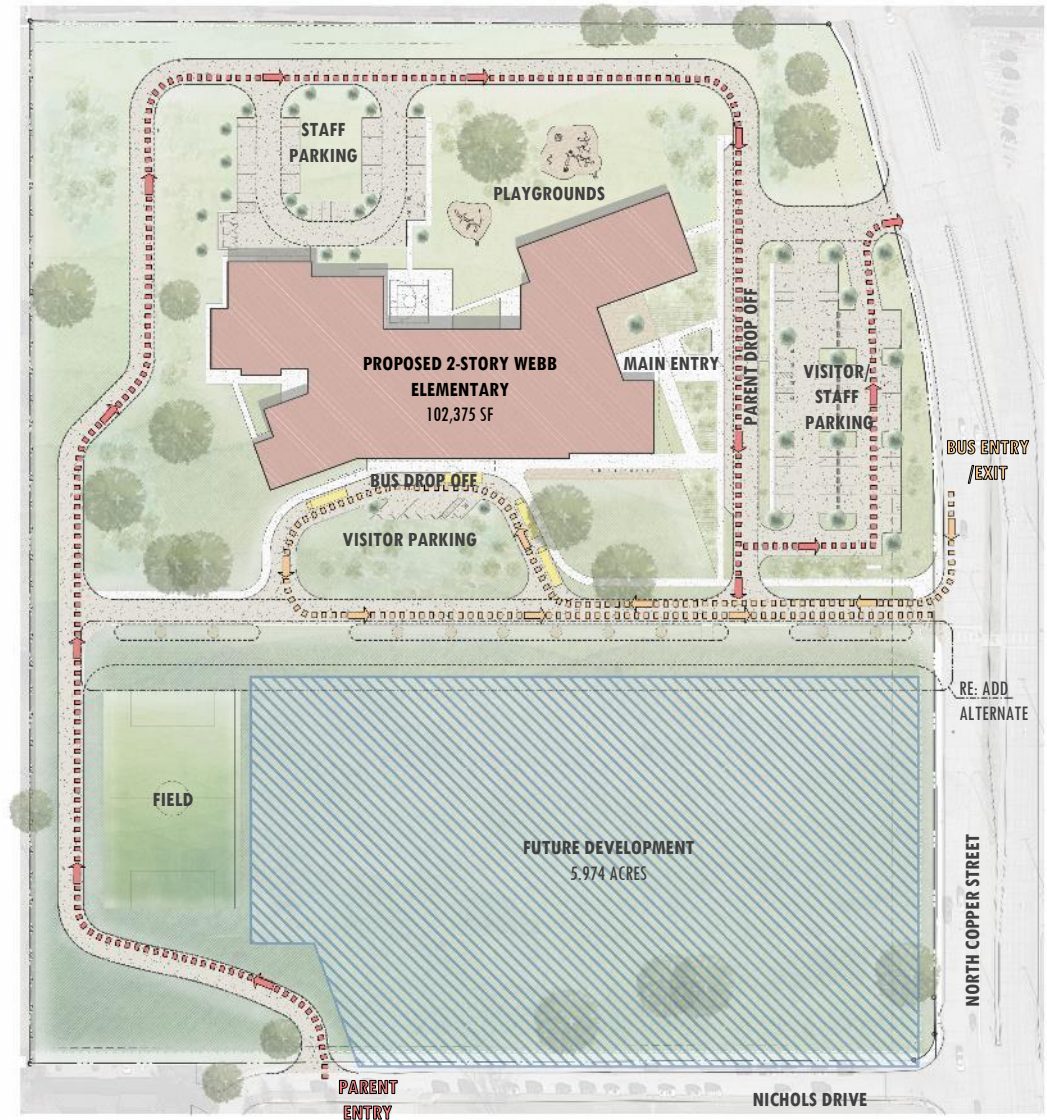
SITE ANALYSIS | EXISTING CONDITIONS

Total Site
19.320 Acres

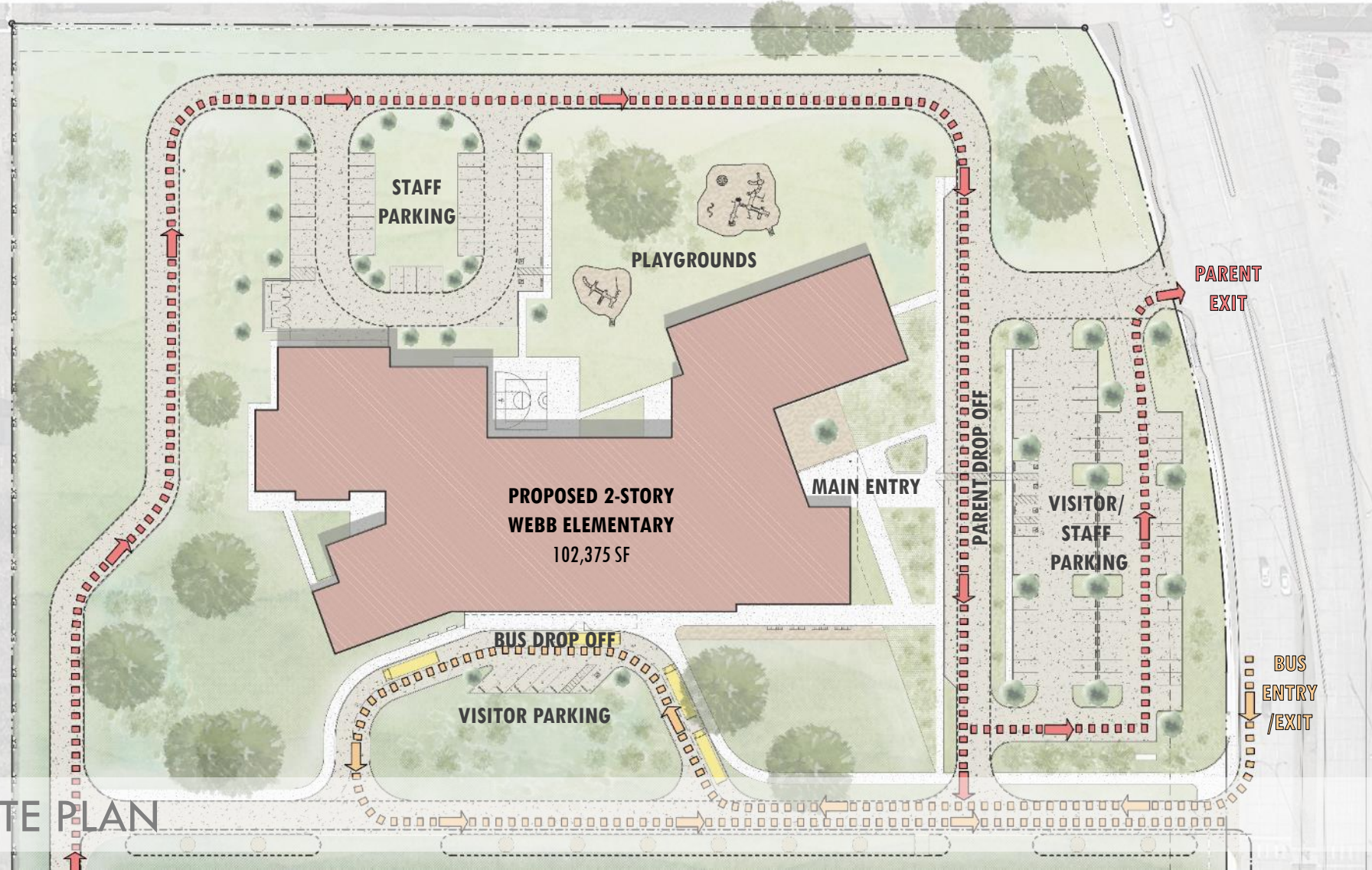
Future Development
5.974 Acres

Webb ES
102,375 GSF

SITE PLAN



SITE PLAN



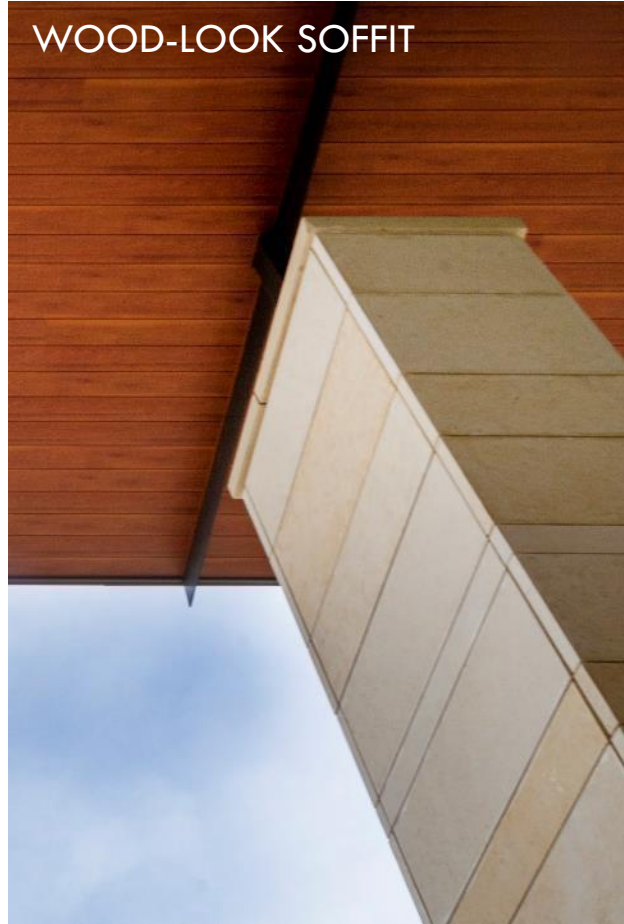


SERAPE | CULTURE | COMFORT | BEAUTY

BRICK DETAILING



WOOD-LOOK SOFFIT



COLOR ACCENTS



FRONT ENTRY FROM COOPER STREET | OPTION A



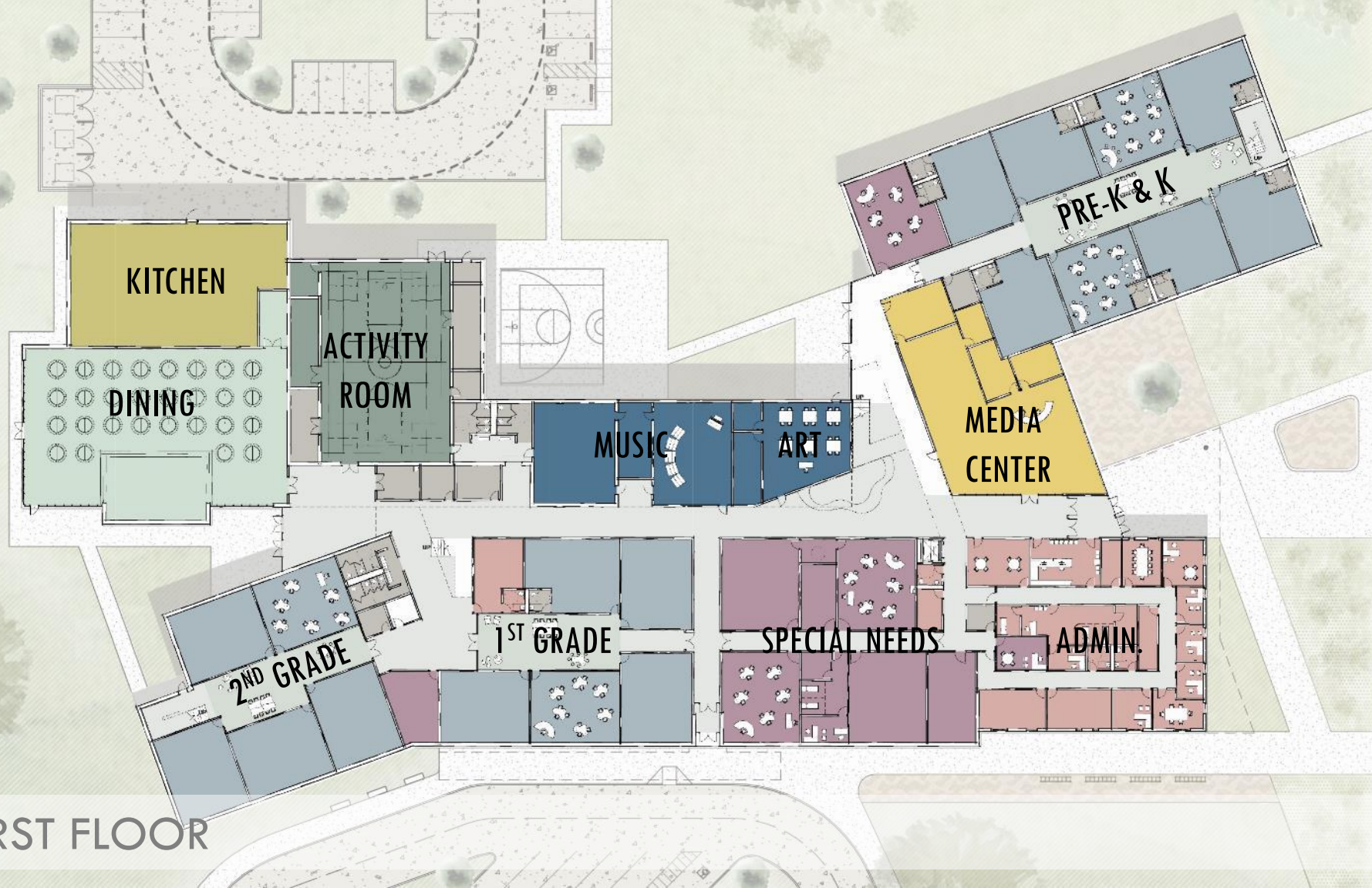
ENTRY COURTYARD | OPTION A



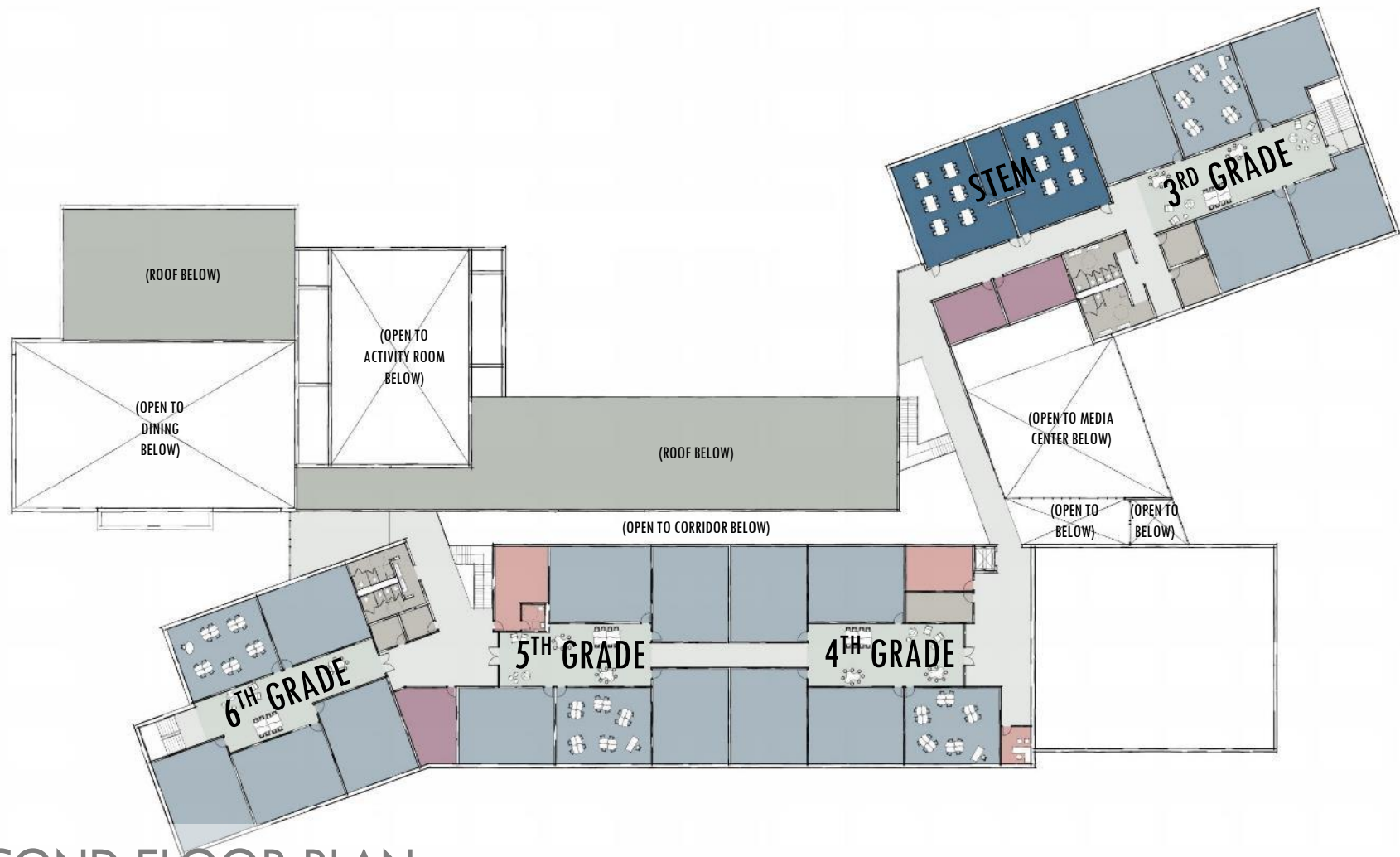
FRONT ENTRY FROM COOPER STREET | OPTION B



ENTRY COURTYARD | OPTION B



FIRST FLOOR



SECOND FLOOR PLAN



Arlington
INDEPENDENT SCHOOL DISTRICT

